

Annual Listing of Federally Obligated Projects

Fiscal Year 2013

Disclaimer

The preparation of this document was financed through grants from and disseminated under the sponsorship of the Federal Highway Administration, the Louisiana Department of Transportation and Development, and the Northwest Louisiana Council of Governments. The United States Government and the State of Louisiana assume no liability for its contents or use thereof.

Non-Discrimination Statement

The Northwest Louisiana Council of Governments (NLCOG) complies with the Americans with Disabilities Act of 1990, Section 504 of the Rehabilitation Act of 1973, Title VI of the Civil Rights Act of 1964, and other federal equal opportunity laws and, therefore, does not discriminate on the basis of race, sex, color, age, national origin, religion or disability; in admission to, access to, treatment in or operations of its programs, services, or activities. NLCOG does not discriminate in its hiring or employment practices.

Questions, concerns, complaints, or requests for additional information regarding the non-discrimination policies may be directed to the designated Title VI, ADA and Section 504 Compliance Coordinator:

Lisa M. Frazier
Public Involvement Coordinator
(318) 841-5950 (voice)
lisa.frazier@nlcog.org
625 Texas Street, Suite 200
Shreveport, LA 71101

Purpose of this Report

The Safe, Accountable, Flexible, Efficient Transportation Equity Act: a Legacy for Users (SAFETEA-LU) (23 CFR part 450 AND CFR part 613), enacted by Congress on July 29, 2005, and carried over in the “Moving Ahead for Progress in the 21st Century” (MAP-21) (23 CFR Section 134(j)(7)(B) transportation legislation enacted by Congress on July 6, 2012, states:

“(i) An annual listing of projects, including investments in pedestrian walkways and bicycle transportation facilities, for which Federal funds have been obligated in the preceding year shall be published or otherwise made available by the cooperative effort of the State, transit operator and metropolitan planning organization for public review. (ii) The listing shall be consistent with the categories identified in the TIP.”¹

The Northwest Louisiana Council of Governments (NLCOG) responds to the directive through this report. It lists all transportation projects in Northwest Louisiana that were obligated during NLCOG’s fiscal year 2013 (July 1, 2012 – June 30, 2013). The Federal Highway Administration (FHWA) defines obligation as the federal government’s legal commitment (promise) to pay or reimburse the states or other entities for the federal share of a project’s eligible costs². Thus, an obligated project is one that has been approved by the federal government for reimbursement, though not necessarily reimbursed yet. Obligated projects were not necessarily initiated or completed in this year. The obligated project cost reflected in this report also may not equal final project cost.

Background

NLCOG is the Metropolitan Planning Organization (MPO) for the Shreveport – Bossier urbanized area. Every metropolitan area with a population of more than 50,000 persons has a designated MPO in order to qualify for federal highway and transit funding. NLCOG, acting in its capacity as the MPO, has responsibility for planning, programming, and coordinating federal-aid transportation investments within the Shreveport – Bossier urbanized area.

The United States Department of Transportation relies on the MPO to ensure that highway and transit projects that use federal funds are products of a credible planning process and meet local priorities.

¹ Title VI, Section 6001 (j)(7)(B)

² Financing Federal Aid Highways Glossary. <http://www.fhwa.dot.gov/reports/fifahiwy/ffahappa.htm>. May 10, 2011.

Transportation legislation – including the Intermodal Surface Transportation Efficiency Act of 1991 (ISTEA), the Transportation Equity Act for the 21st Century (TEA-21), and the Safe, Accountable, Flexible, Efficient Transportation Equity Act: A legacy for Users (SAFETEA-LU) and the new two-year transportation authorization Moving Ahead for Progress in the 21st Century (MAP-21) – strengthened the role MPOs play in rationally developed transportation programs. As the MPO, NLCOG is statutorily mandated to assess the transportation needs and deficiencies of the region with direction from public officials; citizens; modal representatives; and federal, state and local planning departments.

The MPO Transportation Policy Committee (“committee”) membership consists of the administrators from Bossier and Caddo Parishes; the mayors of the cities of Bossier City and Shreveport; the executive director of the Port of Caddo – Bossier, the executive directors of the Metropolitan Planning Commissions of Bossier and Shreveport; the general manager of the local public transit agency and the District IV administrator of LaDOTD. The committee wields final decision-making. Non-voting members include FHWA and FTA. NLCOG represents the perspectives of its local government members, while coordinating its planning efforts with the Louisiana Department of Transportation (LaDOTD), the Federal Transit Administration (FTA) and the Federal Highway Administration (FHWA).

NLCOG is assisted in its planning and programming efforts by a Technical Advisory Committee (TAC) that is comprised of public works directors, planning directors, and transit operators. The TAC meets as-needed to review proposed amendments to the Transportation Improvement Program (TIP). Working groups and ad hoc groups are also created and appointed, as needed.

Regional Transportation Plan

NLCOG develops a minimum 20-year regional long range transportation plan (LRTP) describing the transportation needs and goals for the region. It is the chief legal document reflecting the resources, the fundamental planning process, and the selection of projects for the region. The LRTP includes the needed transportation system and the fiscally-constrained LRTP. The fiscally-constrained LRTP, required by federal law, identifies the multimodal transportation system that can be achieved over a minimum 20-year planning horizon with the “reasonably available” financial resources over that time. Federal law requires NLCOG to update the plan every five years.

The LRTP incorporates policy considerations and related long-term impacts. Analysis of land use changes, population growth and density patterns, economic development and commercial and

residential zoning help identify and rank projects. All regionally significant projects are identified in the plan regardless of their funding source; and, in many cases, projects are funded with combinations of state, federal, and local funds.

Transportation Improvement Program

A Transportation Improvement Program (TIP) is a prioritized, financially-constrained multi-year program for implementation of federally-funded transportation improvement projects in a designated MPO region. The TIP serves as a planning tool to ensure the most effective use of limited funding for transportation improvements. The TIP includes the adopted list of public transit, roadway, bicycle, pedestrian, and air quality projects that will receive federal transportation funds in the near future. A transportation improvement is not eligible for federal funding unless it is documented within the TIP. The TIP also includes the projects in Northwest Louisiana that are intended to only use state funds. The TIP implements the fiscally-constrained LRTP. NLCOG's TIP covers a three-year period, though specific projects and their funding levels are usually identified for the first three or four-year period.

The 2013-2016 TIP was adopted on September 20, 2012, and has been amended regularly since adoption. The projects in this report are from the 2013-2016 TIP. The 2013-2016 TIP defines the projects eligible for federal funding in FY2013, which covers the period from July 1, 2012 to June 30, 2013.

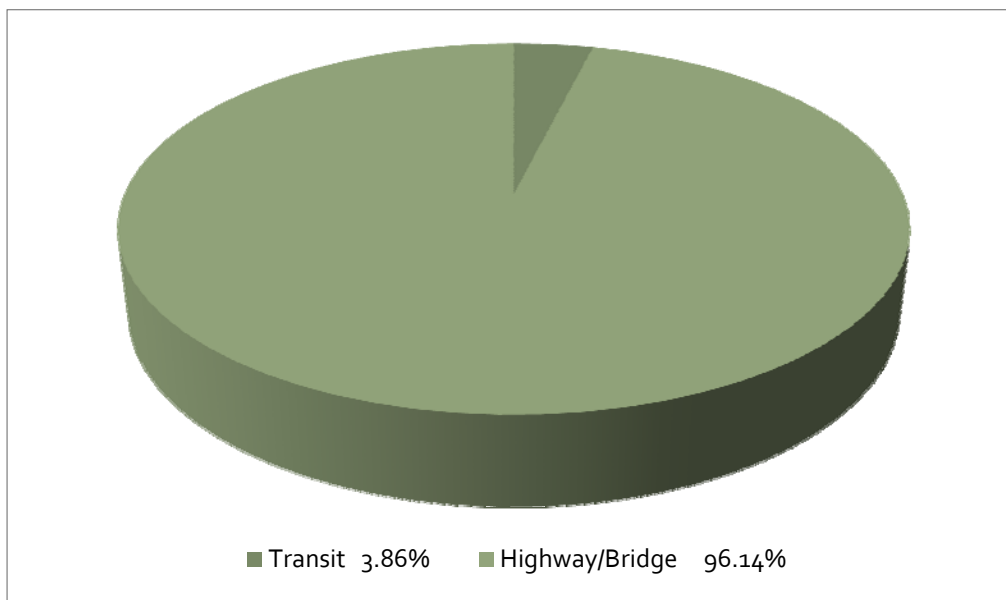
Public Involvement

NLCOG aims to proactively engage the public in the regional transportation planning process and embraces federal requirements that MPOs provide the public with complete information, timely public notice, full public access to key decisions, and early and continuing involvement in developing the LRTP, TIP, and other products. NLCOG's public involvement strategies include presenting information and educating the public, continually soliciting public input, helping information flow between the public and decision makers, and considering and responding to public concerns.

Summary of Projects

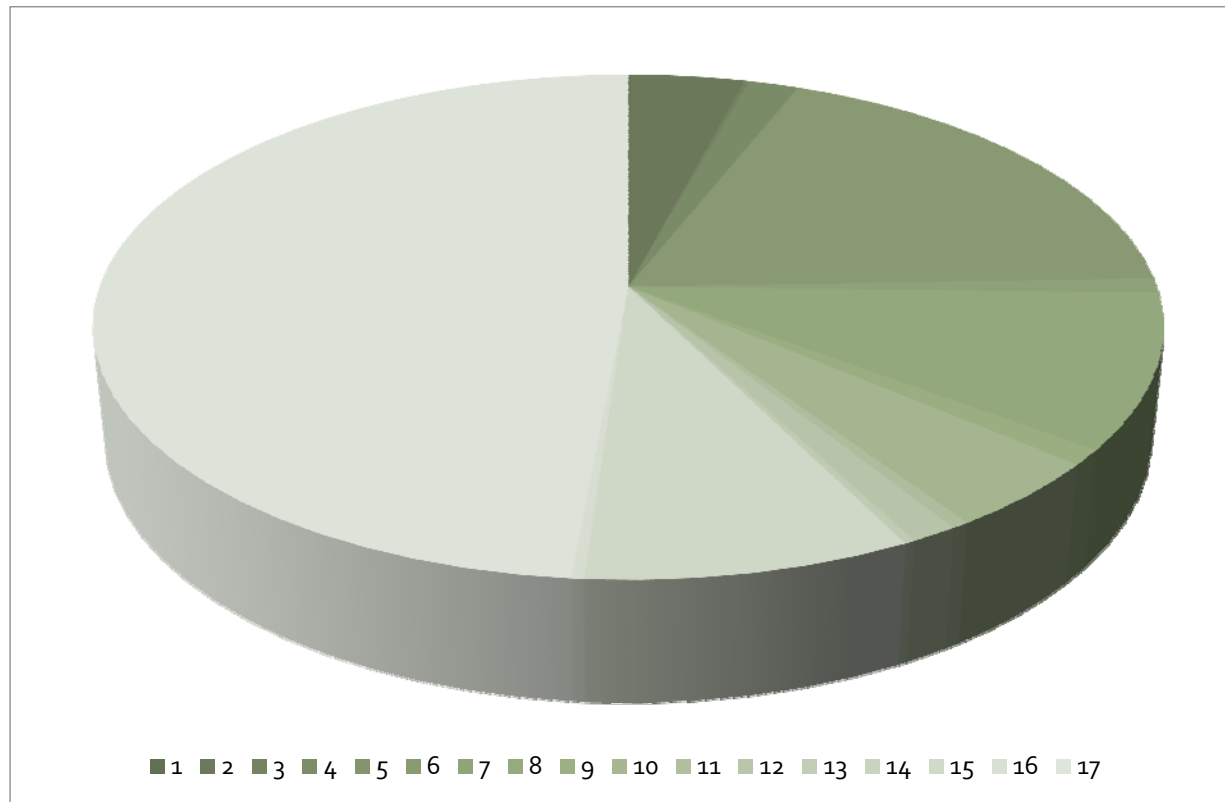
In FY 2013, more than 100 projects were scheduled for a total federal cost of \$ 41,495,940.69. Of this total, \$37,315,977.69 (96.14%) was the federal share for highway/bridge projects and \$4,179,963.00 (3.86%) was for transit projects. The chart below illustrates these percentages:

FY 2013 Federally Obligated Projects Summary



The largest percentage of highway/bridge funds (37.94% total) obligated was the Federal Bridge Replacement Program On/Off System (FBR-ON/OFF) funding stream which funds improvements to the condition of highway bridges through replacement, rehabilitation, and systematic preventive maintenance with \$14,156,167.81 in federal funds. Closely following (20.26%) was the Highway Safety Improvement Program (HSIP) category of funding. The \$8,401,387.28 in funds was used to help achieve a significant reduction in traffic fatalities and serious injuries on all public roads throughout the planning region. In the chart below, the funding by category is illustrated with corresponding percentage of funding. Negative numbers indicate money that was de-obligated. In some cases, it was money that the LaDOTD advanced construction with state funds and now the state funds are removed and federal funds added.

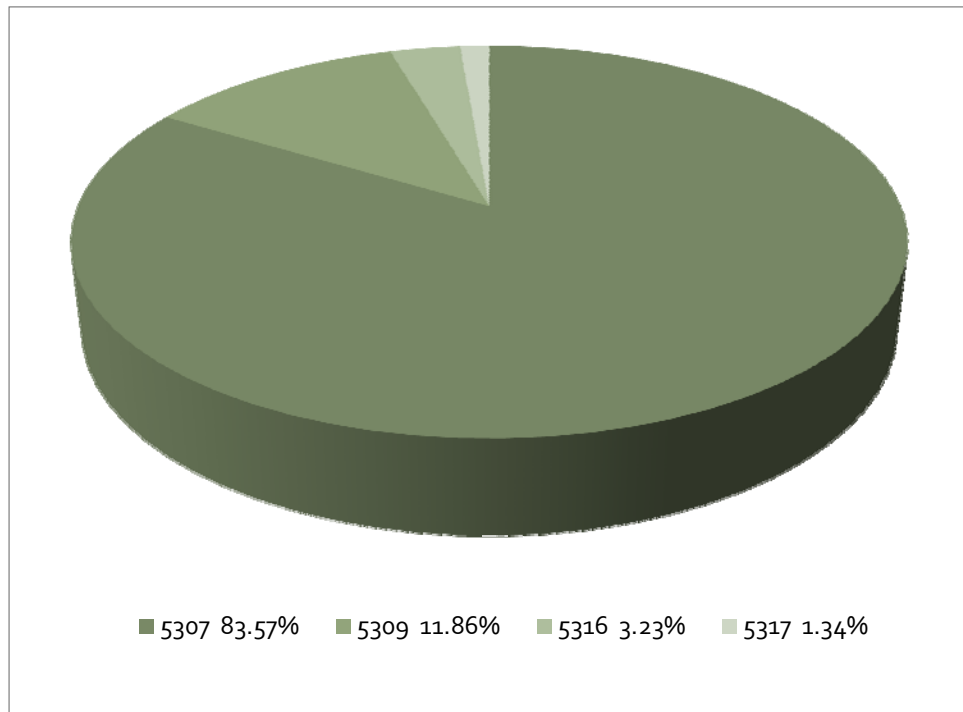
FY 2013 Federally Obligated Highway/Bridge Projects by Funding Category



Prefix	Total Federal Funds	Total All Funds	Percentage of Federal Funds
ARRA>200K	-23,921.01	-23,921.01	-0.06%
DEMOID	3,117,538.30	-910,537.54	8.35%
EB	-124,654.58	-155,818.22	-0.33%
FBR-OFF	1,335,547.61	1,839,224.55	3.58%
FBR-ON	42,222.93	52,778.66	0.11%
FBR-ON/OFF	14,156,167.81	17,695,210.08	37.94%
HFL STP	733,701.50	917,126.87	1.97%
HSIP	7,561,016.26	8,401,387.28	20.26%
IM	-749,877.98	-833,197.76	-2.01%
NHPP	3,377,130.45	4,035,613.64	9.05%
NHS	347,544.12	66,430,672.11	0.93%
RAIL PD	951,338.82	1,084,672.16	2.55%
RCAF	-213,071.66	-266,339.58	-0.57%
STP ENH	4,810.39	6,620.47	0.01%
STP FLEX	6,545,260.62	5,419,320.97	17.54%
STP>200K	255,224.11	319,030.14	0.68%
Total	37,315,977.69		100.00%

The largest percentage of transit funds (82.74% total) obligated was the FTA Section 5307 Capital Budget category of funding. These funds were used for administration, operations, planning, and capital improvements. The chart below illustrates these percentages:

FY 2013 Federally Obligated Transit Projects by FTA Funding Category



Prefix	Total Federal Funds	Total All Funds	Percentage of Federal Funds
Section 5307	3,458,439.00	4,287,316.00	82.74%
Section 5316	249,443.00	498,887.00	5.97%
Section 5317	100,809.00	201,619.00	2.41%
Section 5339	371,272.00	436,791.00	8.88%
Total	4,179,963.00		100.00%

Obligation Report

This report is organized by project phase for highway/bridge projects and funding category for transit projects. The TIP identification (ID), project name, description, funding source and the total obligation amount are shown for each project. The TIP ID is a unique number given to each project selected for inclusion into the NLCOG TIP. A brief description of each project is provided. The obligation is the

federal share for that particular TIP project in the federal fiscal year. The obligation amounts for each of the projects are added up to show the total obligation by project phase.

While federal funding is included in this report, local or state funds are also reported in most cases. In FY2013, federal funding was distributed through the following funding categories:

- **Federal Bridge Replacement On/Off System (FBR-ON/OFF)** are federal funds used for the replacement, rehabilitation or widening of any federal aid facility on- or off-system.
- **Interstate Maintenance Funds (IM)** program provides funding for resurfacing, restoring, rehabilitating and reconstructing most routes on the Interstate System.
- **Surface Transportation Program (STP >200k)** is used within the metropolitan area to fund roadway reconstruction, rehabilitation, traffic operational improvements, bicycle and pedestrian facilities, and studies.
- **Surface Transportation Program (STP ENH)** provides for transportation-related activities that are designed to strengthen the cultural, aesthetic, and environmental aspects of the nation's intermodal transportation system. The transportation enhancements program provides for the implementation of a variety of non-traditional projects, with examples ranging from the restoration of historic transportation facilities, to bike and pedestrian facilities, to landscaping and scenic beautification, and to the mitigation of water pollution from highway runoff.
- **Surface Transportation Program (STP FLEX)** is a flexible funding category that is typically used by LaDOTD to fund roadway reconstruction, Intelligent Transportation System (ITS) projects, or bridge or interchange work.
- **Equitable Bonus (EB)** provides funding to States based on equity considerations. These include a minimum rate of return on contributions to the Highway Account of the Highway Trust Fund, and a minimum increase relative to the average dollar amount of apportionments under TEA-21.
- **STP Rail and Highway Crossings Protective Devices (RAIL PD)** provides Programs to reduce the number and severity of crashes at public highway-rail grade crossings (Section 130) and correct or improve hazardous locations, sections, and elements on any public road, public surface transportation facility, or public bike/ped path or trail.
- **Highways for Life (HFL STP)** is a discretionary grant program that provides funding to build highways and bridges faster, of better quality, and interrupt traffic less during the construction process, build them safer, and have them last longer by identifying and using underutilized innovations and technologies.

- **National Highway System (NHS)** funds improvements to the dynamic roadway system that can change in response to future travel and trade demands which includes the interstate system, as well as other roads important to the nation's economy, defense and mobility.
- **Highway Safety Improvement Program (HSIP)** provides funding to achieve a significant reduction in traffic fatalities and serious injuries on all public roads through the implementation of infrastructure-related highway safety improvements.
- **Demonstration Projects (DEMO)** funding refers to line items, for each individual project, within the past transportation authorizations (i.e. ISTEA, TEA-21, SAFETEA-LU, but not MAP-21) that explicitly devotes funding to the line item project utilizing funds from any number of program (i.e. STP, HSIP, IM, etc.) sources.
- **American Recovery and Reinvestment Act of 2009 (ARRA)** appropriated \$27,500,000,000 from the General Fund of the Treasury in Fiscal Year 2010 and paid up to 100% of the total project cost for eligible projects.
- **National Highway Performance Program (NHPP)** funding provides support for the condition and performance of the NHS; provides support for the construction of new facilities on the NHS; and ensures that investments of federal-aid funds in highway construction are directed to support progress toward the achievement of performance targets established in a state's asset management plan for the NHS.
- **FTA Section 5307** funds are used for capital, operating assistance, preventive maintenance and planning purposes for mass transportation improvements in urbanized areas.
- **FTA Section 5316 Job Access and Reverse Commute (JARC)** grants fund projects and activities that create or enhance transportation services designed to connect low-income individuals to jobs or other employment related activities. JARC grants also support reverse commute projects. Activities funded by JARC must derive from the regional Coordinated Human Services Transportation Plan.
- **FTA Section 5317 New Freedom** grants fund projects that create or enhance public transportation services and remove barriers for the disabled. New Freedom projects must be new (i.e., non-operational and/or unfunded prior to 2005) and must exceed the current requirements of the Americans with Disabilities Act of 1990. Activities funded by New Freedom must derive from the regional Coordinated Human Services Transportation Plan.
- **FTA Section 5339** funds provide capital funding to replace, rehabilitate and purchase buses and related equipment and to construct bus-related facilities.

Some projects include a mixture of different TIP funding categories, and thus one project line under one funding source does not necessarily equal the total obligated funding for that project. The tables below are based on records obtained from LaDOTD, FHWA, and FTA, as NLCOG does not directly participate in the obligation process.

Technical Terms

Various tables, figures, and project tracking sheets within this report include the following technical terms to describe and aid in understanding the projects.

- **Project numbers** given by the LaDOTD as the state transportation project number.
- **Project Description** shows the general project name with a brief description often referenced by a local street, road or highway.
- **Phase** refers to what phase the project is in. All improvements are implemented through a phased or staged process.
- **Total cost** shows the total cost for the project's given phase.
- **Federal funds** are the federal share from the federal government to complete the project (obligation).
- **Funding source** refers to the category of funding source for the primary source of funds.
- **Percent of federal share** refers to the funding split of federal to local/state funds. For examples, 80% means the federal share is 80% of the project cost and local/state funds make up the remaining 20%.
- **Converted/advance construction funds** refer to funds the state of Louisiana advanced in place of federal funds for that phase. Negative numbers is money that was de-obligated. In some cases, it is money that the state advanced construction with state funds and now the state funds are removed and the federal funds are added.
- **Authorization date/transaction date** are the dates the transactions are entered into the system.

Annual Listing of Federally Obligated Projects for Fiscal Year 2013 (Highway)

Project Number	Project Description	Original FHWA Auth Date	Funding Source	Percent of Federal Share	FHWA Transaction Date	Federal Funds Amount	State Funds Amount	Converted Funds Amount	Local Funds Amount	Advance Construction Funds	Other Funds	Total of All Funds
Construction Phase												
H.000101	U. P. RR OVERPASS NEAR GREENWOOD	9/17/2012	FBR-ON/OFF	80.00	9/17/2012	4,298,884.01	1,074,721.00	0.00	0.00	0.00	0.00	5,373,605.01
H.000113	BPCC GATEWAY SIGNS	11/25/2009	STP ENH	95.00	2/13/2013	-2,696.13	0.00	0.00	-141.90	0.00	0.00	-2,838.03
H.000113	BPCC GATEWAY SIGNS	11/25/2009	STP ENH	95.00	11/21/2012	8,000.00	2,000.00	0.00	0.00	0.00	0.00	10,000.00
H.000113	BPCC GATEWAY SIGNS	11/25/2009	STP ENH	95.00	2/13/2013	-493.48	-48.02	0.00	0.00	0.00	0.00	-541.50
H.000115	TURN LANE ADDITION AT LA 3	4/8/2011	HSIP	90.00	11/9/2012	9,000.00	1,000.00	0.00	0.00	0.00	0.00	10,000.00
H.000397	UNION PACIFIC RR O/P NEAR BENTON	9/17/2012	FBR-ON/OFF	80.00	9/17/2012	3,959,368.20	989,842.18	0.00	0.00	0.00	0.00	4,949,210.38
H.000397	UNION PACIFIC RR O/P NEAR BENTON	9/17/2012	FBR-ON/OFF	80.00	9/17/2012	5,241,577.65	1,310,394.41	0.00	0.00	0.00	0.00	6,551,972.06
H.000403	US 71: LA 612 - LA 3032	3/24/2011	STP FLEX	80.00	9/17/2012	1,626,909.08	-189,271.93	2,383,996.80	0.00	-2,383,996.80	0.00	-946,359.65
H.000406	US 71 TURN LANE ADDITIONS	3/30/2011	HSIP	90.00	2/13/2013	45,000.00	5,000.00	0.00	0.00	0.00	0.00	50,000.00
H.001644	BODCAU BAYOU BRIDGE ON LA 2	5/18/2010	FBR-ON/OFF	80.00	2/1/2013	16,000.00	4,000.00	0.00	0.00	0.00	0.00	20,000.00
H.001644	BODCAU BAYOU BRIDGE ON LA 2	5/18/2010	FBR-ON/OFF	80.00	1/18/2013	1,600.00	400.00	0.00	0.00	0.00	0.00	2,000.00
H.001644	BODCAU BAYOU BRIDGE ON LA 2	5/18/2010	FBR-ON/OFF	80.00	11/21/2012	2,640.00	660.00	0.00	0.00	0.00	0.00	3,300.00
H.001644	BODCAU BAYOU BRIDGE ON LA 2	5/18/2010	FBR-ON/OFF	80.00	8/15/2012	25,853.61	6,463.40	0.00	0.00	0.00	0.00	32,317.01
H.001644	BODCAU BAYOU BRIDGE ON LA 2	5/18/2010	FBR-ON/OFF	80.00	11/21/2012	800.00	200.00	0.00	0.00	0.00	0.00	1,000.00
H.001644	BODCAU BAYOU BRIDGE ON LA 2	5/18/2010	FBR-ON/OFF	80.00	11/13/2012	25,000.00	6,250.00	0.00	0.00	0.00	0.00	31,250.00
H.001644	BODCAU BAYOU BRIDGE ON LA 2	5/18/2010	FBR-ON/OFF	80.00	9/10/2012	40,000.00	10,000.00	0.00	0.00	0.00	0.00	50,000.00
H.001644	BODCAU BAYOU BRIDGE ON LA 2	5/18/2010	FBR-ON/OFF	80.00	8/15/2012	5,170.72	1,292.68	0.00	0.00	0.00	0.00	6,463.40
H.001726	CREEK BRIDGE ON LA 173	6/6/2012	FBR-ON/OFF	80.00	9/17/2012	61,091.16	15,272.99	0.00	0.00	0.00	0.00	76,364.15
H.001769	LA 511: LA 523 - FERN AV	9/11/2012	HSIP	90.00	4/30/2013	57,865.00	-57,865.00	0.00	0.00	0.00	0.00	0.00

Project Number	Project Description	Original FHWA Auth Date	Funding Source	Percent of Federal Share	FHWA Transaction Date	Federal Funds Amount	State Funds Amount	Converted Funds Amount	Local Funds Amount	Advance Construction Funds	Other Funds	Total of All Funds
H.001769	LA 511: LA 523 - FERN AV	9/11/2012	HSIP	90.00	4/15/2013	462,920.00	115,730.00	0.00	0.00	0.00	0.00	578,650.00
H.001769	LA 511: LA 523 - FERN AV	9/11/2012	HSIP	90.00	9/21/2012	0.00	372,325.96	0.00	0.00	3,350,933.60	0.00	3,723,259.56
H.001769	LA 511: LA 523 - FERN AV	9/11/2012	HSIP	90.00	1/25/2013	776,872.84	-286,006.77	3,350,933.60	0.00	-3,350,933.60	0.00	-2,860,067.53
H.001769	LA 511: LA 523 - FERN AV	9/11/2012	HFL STP	80.00	9/21/2012	733,701.50	183,425.37	0.00	0.00	0.00	0.00	917,126.87
H.001769	LA 511: LA 523 - FERN AV	9/11/2012	HSIP	90.00	1/25/2013	3,380,984.43	459,243.33	0.00	0.00	0.00	0.00	3,840,227.76
H.001769	LA 511: LA 523 - FERN AV	9/11/2012	HSIP	90.00	4/15/2013	0.00	-83,578.39	0.00	0.00	0.00	0.00	-83,578.39
H.001769	LA 511: LA 523 - FERN AV	9/11/2012	HSIP	90.00	4/15/2013	57,725.10	11,827.80	0.00	0.00	0.00	0.00	69,552.90
H.001771	70 TH STREET & THORNHILL INT.	2/14/2006	STP FLEX	80.00	3/28/2013	-187.73	-2,839.05	0.00	0.00	0.00	0.00	-3,026.78
H.001771	70 TH STREET & THORNHILL INT.	2/14/2006	STP FLEX	80.00	3/28/2013	-446.35	-111.58	0.00	0.00	0.00	0.00	-557.93
H.001780	JIMMY DAVIS E.B. OFF RAMP	10/21/2009	EB	80.00	3/11/2013	-28,932.68	-7,233.17	0.00	0.00	0.00	0.00	-36,165.85
H.001780	JIMMY DAVIS E.B. OFF RAMP	10/21/2009	EB	80.00	3/11/2013	-80,424.18	-20,106.04	0.00	0.00	0.00	0.00	-100,530.22
H.003240	I-20 WB OFF RAMP IMPROV @ PINES RD	4/16/2012	HSIP	90.00	6/13/2013	0.00	0.00	0.00	0.00	0.00	0.00	0.00
H.003240	I-20 WB OFF RAMP IMPROV @ PINES RD	4/16/2012	HSIP	90.00	6/13/2013	9,000.00	1,000.00	0.00	0.00	0.00	0.00	10,000.00
H.003261	I-20:DIST WIDE APPROACH SLAB JACKING	3/25/2013	NHPP	90.00	6/11/2013	146,928.85	16,325.43	0.00	0.00	0.00	0.00	163,254.28
H.003261	I-20:DIST WIDE APPROACH SLAB JACKING	3/25/2013	NHPP	90.00	3/25/2013	193,107.08	21,456.34	0.00	0.00	0.00	0.00	214,563.42
H.003366	I-220 PCCP PATCHING	4/25/2012	IM	90.00	8/20/2012	-749,877.98	-83,319.78	0.00	0.00	0.00	0.00	-833,197.76
H.003369	I-20 EB/WB OFF RAMPS AT I-220 WB	9/15/2011	HSIP	90.00	4/15/2013	9,000.00	1,000.00	0.00	0.00	0.00	0.00	10,000.00
H.003369	I-20 EB/WB OFF RAMPS AT I-220 WB	9/15/2011	HSIP	90.00	10/12/2012	24,001.72	2,666.86	0.00	0.00	0.00	0.00	26,668.58
H.003496	I-49 NORTH (MLK JR DR-LA 1) SEG J	11/14/2012	NHS	80.00	11/28/2012	0.00	13,199,248.39	0.00	0.00	52,796,993.57	0.00	65,996,241.96
H.003496	I-49 NORTH (MLK JR DR-LA 1) SEG J	11/14/2012	NHS	80.00	4/15/2013	99,553.61	24,888.40	0.00	0.00	0.00	0.00	124,442.01
H.003497	I-49 NORTH (LA 1 - LA 173) SEG I	2/23/2010	DEMOID1702	80.00	12/20/2012	60,000.00	15,000.00	0.00	0.00	0.00	0.00	75,000.00

Project Number	Project Description	Original FHWA Auth Date	Funding Source	Percent of Federal Share	FHWA Transaction Date	Federal Funds Amount	State Funds Amount	Converted Funds Amount	Local Funds Amount	Advance Construction Funds	Other Funds	Total of All Funds
H.003497	I-49 NORTH (LA 1 - LA 173) SEG I	2/23/2010	DEMOID1302	80.00	12/20/2012	36,000.00	9,000.00	0.00	0.00	0.00	0.00	45,000.00
H.003497	I-49 NORTH (LA 1 - LA 173) SEG I	2/23/2010	DEMOID1702	80.00	12/20/2012	222,212.95	55,553.24	0.00	0.00	0.00	0.00	277,766.19
H.003497	I-49 NORTH (LA 1 - LA 173) SEG I	2/23/2010	DEMOID1302	80.00	12/20/2012	203,741.38	50,935.35	0.00	0.00	0.00	0.00	254,676.73
H.003497	I-49 NORTH (LA 1 - LA 173) SEG I	2/23/2010	ARRA >200K	100.00	9/25/2012	7,230.23	0.00	0.00	0.00	0.00	0.00	7,230.23
H.003512	I-49 NORTH(MIRA-MYRTIS RD TO LA 168	6/20/2005	NHS	80.00	8/15/2012	-480,000.00	-120,000.00	0.00	0.00	0.00	0.00	-600,000.00
H.003512	I-49 NORTH(MIRA-MYRTIS RD TO LA 168	6/20/2005	DEMOID1105	80.00	8/15/2012	-2,484.06	-621.01	0.00	0.00	0.00	0.00	-3,105.07
H.003512	I-49 NORTH(MIRA-MYRTIS RD TO LA 168	6/20/2005	DEMOID1105	80.00	8/15/2012	-529.58	-132.39	0.00	0.00	0.00	0.00	-661.97
H.003512	I-49 NORTH(MIRA-MYRTIS RD TO LA 168	6/20/2005	DEMOID1105	80.00	3/22/2013	-2,069.46	-517.37	0.00	0.00	0.00	0.00	-2,586.83
H.003516	I-49N (SEG A - D) SIGNAGE & MISC CONST	10/25/2012	DEMOID1302	80.00	11/19/2012	1,238,061.53	309,626.38	0.00	0.00	0.00	1,541,179.00	3,088,866.91
H.003516	I-49N (SEG A - D) SIGNAGE & MISC CONST	10/25/2012	DEMOID1302	80.00	4/3/2013	309,479.32	77,369.83	0.00	0.00	0.00	0.00	386,849.15
H.006043	DOGWOOD TR BR OVER RED CHUTE BAYOU	2/4/2013	FBR-OFF	80.00	4/15/2013	-309,968.87	-77,492.22	0.00	-53,026.55	0.00	0.00	-440,487.64
H.006043	DOGWOOD TR BR OVER RED CHUTE BAYOU	2/4/2013	FBR-OFF	80.00	2/4/2013	1,395,560.59	348,890.15	0.00	222,797.40	0.00	0.00	1,967,248.14
H.006471	SHREVEPORT INTERMEDIATE ITS PHASE 2	12/23/2010	EB	80.00	2/1/2013	-390,266.88	-97,566.72	0.00	0.00	0.00	0.00	-487,833.60
H.006471	SHREVEPORT INTERMEDIATE ITS PHASE 2	12/23/2010	EB	80.00	2/1/2013	390,266.88	97,566.72	0.00	0.00	0.00	0.00	487,833.60
H.006471	SHREVEPORT INTERMEDIATE ITS PHASE 2	12/23/2010	EB	80.00	9/5/2012	390,266.88	97,566.72	0.00	0.00	0.00	0.00	487,833.60
H.007091	STOCKWELL ROAD	1/27/2010	ARRA >200K	100.00	3/28/2013	-7,501.52	0.00	0.00	0.00	0.00	0.00	-7,501.52
H.007091	STOCKWELL ROAD	1/27/2010	STP>200K	80.00	12/21/2012	-248,000.00	0.00	0.00	-62,000.00	0.00	0.00	-310,000.00
H.007092	CONCRETE PANEL REP.GREEN ACRES BV	1/27/2010	ARRA >200K	100.00	8/23/2012	-5,784.18	0.00	0.00	0.00	0.00	0.00	-5,784.18
H.007092	CONCRETE PANEL REP.GREEN ACRES BV	1/27/2010	ARRA >200K	100.00	11/15/2012	-10,651.25	0.00	0.00	0.00	0.00	0.00	-10,651.25
H.007092	CONCRETE PANEL REP.GREEN ACRES BV	1/27/2010	ARRA >200K	100.00	8/23/2012	-1,446.05	0.00	0.00	0.00	0.00	0.00	-1,446.05
H.007092	CONCRETE PANEL REP.GREEN ACRES BV	1/27/2010	ARRA >200K	100.00	11/15/2012	-5,768.24	0.00	0.00	0.00	0.00	0.00	-5,768.24

Project Number	Project Description	Original FHWA Auth Date	Funding Source	Percent of Federal Share	FHWA Transaction Date	Federal Funds Amount	State Funds Amount	Converted Funds Amount	Local Funds Amount	Advance Construction Funds	Other Funds	Total of All Funds
H.007897	LA 3105 TURN LANE IMPROVEMENTS	12/18/2012	HSIP	90.00	12/18/2012	193,107.08	21,456.34	0.00	0.00	0.00	0.00	214,563.42
H.009089	LA 526: KINGSTON RD TO LINWOOD AVE.	5/30/2013	HSIP	90.00	5/30/2013	1,689,686.93	187,742.99	0.00	0.00	0.00	0.00	1,877,429.92
H.009094	EB I-20 EXIT RAMP TO LA 169	4/18/2012	NHS	80.00	11/20/2012	343,301.47	85,825.37	0.00	0.00	0.00	0.00	429,126.84
H.009203	LA 526: LA 511 WEST TO LA 511 EAST	5/16/2012	STP FLEX	80.00	7/25/2012	-5,953.56	-1,488.39	0.00	0.00	0.00	0.00	-7,441.95
H.009287	SHREVEPORT MOTORIST ASSIST PATROL	11/16/2010	NHS	80.00	4/5/2013	216,000.00	54,000.00	0.00	0.00	0.00	0.00	270,000.00
H.009287	SHREVEPORT MOTORIST ASSIST PATROL	11/16/2010	STP>200K	80.00	4/5/2013	356,000.00	89,000.00	0.00	0.00	0.00	0.00	445,000.00
H.009287	SHREVEPORT MOTORIST ASSIST PATROL	11/16/2010	STP FLEX	80.00	4/5/2013	0.00	0.00	0.00	0.00	0.00	0.00	0.00
H.009398	LA 3132: LINWOOD TO I-49 (WEAVE LANE)	4/9/2013	HSIP	90.00	4/9/2013	365,531.56	40,614.62	0.00	0.00	0.00	0.00	406,146.18
H.009398	LA 3132: LINWOOD TO I-49 (WEAVE LANE)	4/9/2013	HSIP	90.00	4/9/2013	9,954.42	1,106.05	0.00	0.00	0.00	0.00	11,060.47
H.009503	LA 169: GAMM ROAD TO US 71	3/4/2013	STP FLEX	80.00	3/4/2013	1,343,643.82	335,910.95	0.00	0.00	0.00	0.00	1,679,554.77
H.009545	US 80: WAFER & PRINCETON RD LT TURN LN	7/25/2012	STP FLEX	80.00	7/25/2012	0.00	44,106.66	0.00	0.00	176,426.64	0.00	220,533.30
H.009578	I-49: LA 526 TO I-20	6/10/2013	NHPP	90.00	6/10/2013	997,719.90	110,857.77	0.00	0.00	0.00	0.00	1,108,577.67
H.009888	KCS (BOSSIER CITY)	8/23/2012	RAIL PD	100.00	8/24/2012	71,280.27	0.00	0.00	0.00	0.00	0.00	71,280.27
H.009888	KCS (BOSSIER CITY)	8/23/2012	RAIL PD	100.00	8/24/2012	533,386.35	0.00	0.00	0.00	0.00	133,333.34	666,719.69
H.009889	UP (SHREVEPORT) LA 511	1/4/2013	STP FLEX	80.00	1/4/2013	239,666.71	59,916.68	0.00	0.00	0.00	0.00	299,583.39
H.009889	UP (SHREVEPORT) LA 511	1/4/2013	STP FLEX	80.00	1/4/2013	160,851.67	40,212.92	0.00	0.00	0.00	0.00	201,064.59
H.009914	MORNINGSIDE DR BR / VIRGINIA AV DITCH	7/18/2012	FBR-OFF	80.00	7/19/2012	202,217.49	50,579.37	0.00	0.00	0.00	0.00	252,796.86
H.009914	MORNINGSIDE DR BR / VIRGINIA AV DITCH	7/18/2012	FBR-OFF	80.00	8/15/2012	6,720.00	1,680.00	0.00	0.00	0.00	0.00	8,400.00
H.009914	MORNINGSIDE DR BR / VIRGINIA AV DITCH	7/18/2012	FBR-OFF	80.00	7/19/2012	65,520.00	16,380.00	0.00	0.00	0.00	0.00	81,900.00
H.010120	I-20: TREE REMOVAL - BOSSIER PARISH	4/5/2013	HSIP	90.00	4/5/2013	307,624.66	34,180.52	0.00	0.00	0.00	0.00	341,805.18
H.010120	I-20: TREE REMOVAL - BOSSIER PARISH	4/5/2013	HSIP	90.00	4/5/2013	24,948.64	2,772.07	0.00	0.00	0.00	0.00	27,720.71

Project Number	Project Description	Original FHWA Auth Date	Funding Source	Percent of Federal Share	FHWA Transaction Date	Federal Funds Amount	State Funds Amount	Converted Funds Amount	Local Funds Amount	Advance Construction Funds	Other Funds	Total of All Funds
H.010229	LA 185: JCT LA 72 TO BARKSDALE AFB	12/10/2012	STP FLEX	80.00	12/10/2012	708,536.09	177,134.02	0.00	0.00	0.00	0.00	885,670.11
H.010301	RESURFACING ROADS IN CADDO	5/21/2013	NHPP	80.00	5/21/2013	793,407.85	198,351.96	0.00	0.00	0.00	0.00	991,759.81
H.010301	RESURFACING ROADS IN CADDO	5/21/2013	STP FLEX	80.00	5/21/2013	1,313,128.13	328,282.03	0.00	0.00	0.00	0.00	1,641,410.16
H.010315	LA 3105 AND LA 511 PCCP PATCHING PROJECT	1/7/2013	STP FLEX	80.00	1/7/2013	65,009.79	16,252.45	0.00	0.00	0.00	0.00	81,262.24
H.010315	LA 3105 AND LA 511 PCCP PATCHING PROJECT	1/7/2013	STP FLEX	80.00	1/7/2013	555,793.71	138,948.43	0.00	0.00	0.00	0.00	694,742.14
H.010316	LA 3194: LA 173 TO US 71	1/7/2013	STP FLEX	80.00	1/7/2013	550,235.97	137,558.99	0.00	0.00	0.00	0.00	687,794.96
H.010609	KCS (BOSSIER) BODCAU STATION RD.	3/8/2013	RAIL PD	100.00	3/8/2013	220,816.49	0.00	0.00	0.00	0.00	0.00	220,816.49
H.010609	KCS (BOSSIER) BODCAU STATION RD.	3/8/2013	RAIL PD	100.00	3/8/2013	134,524.37	0.00	0.00	0.00	0.00	0.00	134,524.37
Construction Phase Total												\$34,706,505.51

Engineering Phase

H.000118	BAYOU FIFI BRIDGE	11/6/2012	FBR-ON/OFF	80.00	11/6/2012	47,068.78	11,767.19	0.00	0.00	0.00	0.00	58,835.97
H.000118	BAYOU FIFI BRIDGE	11/6/2012	FBR-ON/OFF	80.00	6/20/2013	4,000.00	1,000.00	0.00	0.00	0.00	0.00	5,000.00
H.001661	BLACK BAYOU BRIDGE	9/14/2012	FBR-ON	80.00	10/30/2012	42,222.93	10,555.73	0.00	0.00	0.00	0.00	52,778.66
H.001795	RED CHUTE AND OLD CHANNEL BRIDGES	11/21/2011	FBR-ON/OFF	80.00	8/7/2012	41,732.16	10,433.04	0.00	0.00	0.00	0.00	52,165.20
H.003244	DISTRICT 04 VARIOUS BRIDGE LOCATION	6/19/2013	NHPP	80.00	6/19/2013	245,596.65	61,399.16	0.00	0.00	0.00	0.00	306,995.81
H.003263	I-20, WESTERFIELD - INDUSTRIAL	10/17/2011	FBR-ON/OFF	80.00	1/16/2013	45,127.29	11,281.82	0.00	0.00	0.00	0.00	56,409.11
H.003263	I-20, WESTERFIELD - INDUSTRIAL	10/17/2011	FBR-ON/OFF	80.00	9/5/2012	36,232.32	9,058.08	0.00	0.00	0.00	0.00	45,290.40
H.003850	OFF-SYSTEM BRIDGE REHAB AND REP	2/24/2004	FBR-OFF	80.00	2/27/2013	-7,790.78	-1,953.50	0.00	0.00	0.00	0.00	-9,744.28
H.003850	OFF-SYSTEM BRIDGE REHAB AND REP	2/24/2004	FBR-OFF	80.00	2/27/2013	-16,710.82	-4,177.71	0.00	0.00	0.00	0.00	-20,888.53
H.003854	BOSSIER CONG RELIEF NORTH-SOUTH CORR	4/19/2007	DEMOID1702	80.00	2/13/2013	16,000.00	4,000.00	0.00	0.00	0.00	0.00	20,000.00
H.003854	BOSSIER CONG RELIEF NORTH-SOUTH CORR	4/19/2007	DEMOID1702	80.00	7/18/2012	-259.59	-64.90	0.00	0.00	0.00	0.00	-324.49

Project Number	Project Description	Original FHWA Auth Date	Funding Source	Percent of Federal Share	FHWA Transaction Date	Federal Funds Amount	State Funds Amount	Converted Funds Amount	Local Funds Amount	Advance Construction Funds	Other Funds	Total of All Funds
H.003854	BOSSIER CONG RELIEF NORTH-SOUTH CORR	4/19/2007	DEMOID1702	80.00	1/25/2013	1,500.00	500.00	0.00	0.00	0.00	0.00	2,000.00
H.003855	BOSSIER PAR CONG RELIEF WINFIELD RD	3/19/2008	DEMOID 129	100.00	9/17/2012	-553,644.48	0.00	0.00	0.00	0.00	0.00	-553,644.48
H.003855	BOSSIER PAR CONG RELIEF WINFIELD RD	3/19/2008	DEMOID1702	80.00	9/17/2012	-673,099.78	-28,045.83	0.00	0.00	0.00	-140,229.12	-841,374.73
H.003886	I-49 NORTH (I-220 TO MARTIN LUTHER KING	8/28/2003	DEMOID1302	80.00	5/14/2013	942,064.42	235,516.11	0.00	0.00	0.00	0.00	1,177,580.53
H.003889	I-49 NORTH (LA 170 TO US 71)	3/27/2002	DEMOID1302	80.00	12/21/2012	-66,466.26	-16,616.57	0.00	0.00	0.00	0.00	-83,082.83
H.003896	I-49 NORTH (LA 169 - LA 530)	3/27/2002	DEMOID1702	80.00	3/28/2013	-26,413.95	-6,603.49	0.00	0.00	0.00	0.00	-33,017.44
H.003896	I-49 NORTH (LA 169 - LA 530)	3/27/2002	RCAF	80.00	3/28/2013	-213,071.66	-53,267.92	0.00	0.00	0.00	0.00	-266,339.58
H.003905	I-49 NORTH (I-220 TO MARTIN LUTHER KING	5/11/2006	NHS	80.00	7/6/2012	168,689.04	42,172.26	0.00	0.00	0.00	0.00	210,861.30
H.003905	I-49 NORTH (I-220 TO MARTIN LUTHER KING	5/11/2006	DEMOID1105	80.00	7/6/2012	19,290.68	4,822.67	0.00	0.00	0.00	0.00	24,113.35
H.003905	I-49 NORTH (I-220 TO MARTIN LUTHER KING	5/11/2006	DEMOID1602	80.00	7/6/2012	31,923.53	7,980.88	0.00	0.00	0.00	0.00	39,904.41
H.003916	I-49 NORTH (LA 1 TO LA 173)	1/17/2008	DEMOID 112	80.00	12/13/2012	-52,101.28	0.00	0.00	0.00	0.00	0.00	-52,101.28
H.003916	I-49 NORTH (LA 1 TO LA 173)	1/17/2008	DEMOID1702	80.00	12/11/2012	106,471.60	26,617.90	0.00	0.00	0.00	0.00	133,089.50
H.003916	I-49 NORTH (LA 1 TO LA 173)	1/17/2008	DEMOID1702	80.00	10/24/2012	46,292.00	11,573.00	0.00	0.00	0.00	0.00	57,865.00
H.005622	I-49 NORTH (LA 170 TO US 71) SEGMENT "E"	2/4/2009	DEMOID1302	80.00	12/21/2012	-176,483.05	-44,120.76	0.00	0.00	0.00	0.00	-220,603.81
H.007896	LA 3105 AT SHED ROAD TURN LANES	12/15/2011	HSIP	90.00	1/18/2013	18,000.00	2,000.00	0.00	0.00	0.00	0.00	20,000.00
H.009889	UP (SHREVEPORT) LA 511	4/24/2012	STP FLEX	80.00	1/24/2013	8,000.00	2,000.00	0.00	0.00	0.00	0.00	10,000.00
Engineering Phase Total												\$34,169.75
Planning / Environmental Phase												
H.000102	CROSS BAYOU AND RELIEF BRIDGES	7/30/2012	FBR-ON/OFF	80.00	5/28/2013	74,067.20	18,516.80	0.00	0.00	0.00	0.00	92,584.00
H.001623	CREEK BRIDGE & IRISH BAYOU BRIDGE	10/25/2011	FBR-ON/OFF	80.00	10/26/2012	1,600.00	400.00	0.00	0.00	0.00	0.00	2,000.00
H.001623	CREEK BRIDGE & IRISH BAYOU BRIDGE	10/25/2011	FBR-ON/OFF	80.00	1/18/2013	1,600.00	400.00	0.00	0.00	0.00	0.00	2,000.00

Project Number	Project Description	Original FHWA Auth Date	Funding Source	Percent of Federal Share	FHWA Transaction Date	Federal Funds Amount	State Funds Amount	Converted Funds Amount	Local Funds Amount	Advance Construction Funds	Other Funds	Total of All Funds
H.001661	BLACK BAYOU BRIDGE	9/14/2012	FBR-ON/OFF	80.00	9/14/2012	20,035.20	5,008.80	0.00	0.00	0.00	0.00	25,044.00
H.001769	LA 511: LA 523 - FERN AV	2/27/2012	HSIP	90.00	4/15/2013	73,391.75	0.00	73,391.75	0.00	-73,391.75	0.00	0.00
H.001769	LA 511: LA 523 - FERN AV	2/27/2012	HSIP	90.00	1/25/2013	0.00	0.00	0.00	0.00	0.00	0.00	0.00
H.001769	LA 511: LA 523 - FERN AV	2/27/2012	HSIP	90.00	9/21/2012	0.00	8,154.64	0.00	0.00	73,391.75	0.00	81,546.39
H.001779	JIMMIE DAVIS BRIDGE (LA 511)	3/7/2013	NHPP	80.00	3/15/2013	847,606.52	211,901.63	0.00	0.00	0.00	0.00	1,059,508.15
H.003504	I-49 NORTH (LA 173-LA 169)	3/30/2007	DEMOID1702	80.00	8/27/2012	-32,022.89	-8,005.72	0.00	0.00	0.00	0.00	-40,028.61
H.006447	I-69: SIU 14 JCT I-20 TO US 82	9/1/2001	DEMOID 117	100.00	12/11/2012	-1,699,191.50	0.00	0.00	0.00	0.00	0.00	-1,699,191.50
H.009213	LA 3132 (INNER LOOP) EXTENSION	9/7/2011	STP>200K	80.00	3/1/2013	8,000.00	2,000.00	0.00	0.00	0.00	0.00	10,000.00
H.009213	LA 3132 (INNER LOOP) EXTENSION	9/7/2011	STP>200K	80.00	8/31/2012	13,680.00	3,420.00	0.00	0.00	0.00	0.00	17,100.00
H.009213	LA 3132 (INNER LOOP) EXTENSION	9/7/2011	STP>200K	80.00	8/7/2012	0.00	66,000.00	0.00	-66,000.00	0.00	0.00	0.00
H.010605	US 71 CORRIDOR STUDY	6/28/2013	STP FLEX	80.00	6/28/2013	152,763.60	38,190.90	0.00	0.00	0.00	0.00	190,954.50
H.010605	US 71 CORRIDOR STUDY	6/28/2013	NHPP	80.00	6/28/2013	152,763.60	38,190.90	0.00	0.00	0.00	0.00	190,954.50
H.971639	UP(SHREVEPORT)	7/11/2007	RAIL PD	100.00	3/5/2013	-7,217.17	0.00	0.00	0.00	0.00	0.00	-7,217.17
H.971639	UP(SHREVEPORT)	7/11/2007	HSIP	100.00	3/5/2013	-131.72	0.00	0.00	0.00	0.00	0.00	-131.72
H.971639	UP(SHREVEPORT)	7/11/2007	HSIP	100.00	3/5/2013	-17.51	0.00	0.00	0.00	0.00	0.00	-17.51
H.971639	UP(SHREVEPORT)	7/11/2007	RAIL PD	100.00	3/5/2013	-1,451.49	0.00	0.00	0.00	0.00	0.00	-1,451.49
H.971747	KCS (BOSSIER CITY)	8/30/2004	HSIP	100.00	7/20/2012	60,000.00	0.00	0.00	0.00	0.00	0.00	60,000.00
H.971747	KCS (BOSSIER CITY)	8/30/2004	HSIP	100.00	2/22/2013	-25,448.64	0.00	0.00	0.00	0.00	0.00	-25,448.64
H.971747	KCS (BOSSIER CITY)	8/30/2004	HSIP	100.00	7/20/2012	12,000.00	0.00	0.00	0.00	0.00	0.00	12,000.00
Planning / Environmental Phase Total												\$-29,795.10

Right of Way Phase

Project Number	Project Description	Original FHWA Auth Date	Funding Source	Percent of Federal Share	FHWA Transaction Date	Federal Funds Amount	State Funds Amount	Converted Funds Amount	Local Funds Amount	Advance Construction Funds	Other Funds	Total of All Funds
H.000102	CROSS BAYOU AND RELIEF BRIDGES	7/30/2012	FBR-ON/OFF	80.00	7/31/2012	103,584.00	25,896.00	0.00	0.00	0.00	0.00	129,480.00
H.000106	JEFFERSON PAIGE ROAD(I220-US 80)	8/1/2001	EB	80.00	8/14/2012	-241,933.21	-60,483.30	0.00	0.00	0.00	0.00	-302,416.51
H.001737	I-49 NORTH (LA 168 - ARKANSAS STATE LINE	11/23/2004	DEMOID 330	80.00	2/25/2013	-233,047.29	-58,261.83	0.00	0.00	0.00	0.00	-291,309.12
H.001737	I-49 NORTH (LA 168 - ARKANSAS STATE LINE	11/23/2004	DEMOID1105	80.00	7/23/2012	-103,537.33	-25,884.33	0.00	0.00	0.00	0.00	-129,421.66
H.001769	LA 511: LA 523 - FERN AV	2/27/2012	HSIP	80.00	1/25/2013	0.00	0.00	0.00	0.00	0.00	0.00	0.00
H.002856	INTERSECTION IMPROVEMENTS YOUREE DR	2/21/2006	STP>200K	80.00	6/26/2013	-1,139,188.41	0.00	0.00	-284,797.10	0.00	0.00	-1,423,985.51
H.003495	I-49 NORTH (I-220-MLK DRIVE) SEG K	7/12/2011	DEMOID1302	80.00	1/23/2013	16,000.00	4,000.00	0.00	0.00	0.00	0.00	20,000.00
H.003495	I-49 NORTH (I-220-MLK DRIVE) SEG K	7/12/2011	DEMOID1302	80.00	3/22/2013	0.00	0.00	0.00	0.00	0.00	-5,400,000.00	-5,400,000.00
H.003495	I-49 NORTH (I-220-MLK DRIVE) SEG K	7/12/2011	DEMOID1302	80.00	4/5/2013	0.00	0.00	0.00	0.00	0.00	-1,350,000.00	-1,350,000.00
H.003495	I-49 NORTH (I-220-MLK DRIVE) SEG K	7/12/2011	DEMOID1302	80.00	3/22/2013	5,120,000.00	1,280,000.00	0.00	0.00	0.00	0.00	6,400,000.00
H.003495	I-49 NORTH (I-220-MLK DRIVE) SEG K	7/12/2011	DEMOID1302	80.00	4/5/2013	1,080,000.00	270,000.00	0.00	0.00	0.00	0.00	1,350,000.00
H.003504	I-49 NORTH (LA 173-LA 169)	3/30/2007	DEMOID1702	80.00	8/27/2012	32,022.89	8,005.72	0.00	0.00	0.00	0.00	40,028.61
H.003506	I-49 NORTH (LA 170 TO US 71)	8/7/2008	DEMOID1302	80.00	7/23/2012	-988,771.24	-247,192.81	0.00	0.00	0.00	0.00	-1,235,964.05
H.003511	I-49 NORTH (MARTIN LUTHER KING, JR DRIVE	3/17/2004	DEMOID1302	90.00	7/23/2012	-2,986,000.00	-331,777.79	0.00	0.00	0.00	0.00	-3,317,777.79
H.003511	I-49 NORTH (MARTIN LUTHER KING, JR DRIVE	3/17/2004	DEMOID1302	90.00	2/25/2013	-1,691,821.12	-187,980.12	0.00	0.00	0.00	0.00	-1,879,801.24
H.003511	I-49 NORTH (MARTIN LUTHER KING, JR DRIVE	3/17/2004	DEMOID1302	90.00	4/26/2013	20,831.40	2,314.60	0.00	0.00	0.00	0.00	23,146.00
H.003854	BOSSIER CONG RELIEF NORTH-SOUTH CORR	4/26/2013	DEMOID1702	80.00	4/26/2013	657,099.78	30,000.00	0.00	134,274.95	0.00	0.00	821,374.73
H.003854	BOSSIER CONG RELIEF NORTH-SOUTH CORR	4/26/2013	DEMOID1702	80.00	4/26/2013	14,400.00	600.00	0.00	3,500.00	0.00	0.00	18,500.00
H.003854	BOSSIER CONG RELIEF NORTH-SOUTH CORR	4/26/2013	DEMOID1702	80.00	4/26/2013	180,789.78	8,000.00	0.00	37,197.45	0.00	0.00	225,987.23
H.003854	BOSSIER CONG RELIEF NORTH-SOUTH CORR	4/26/2013	DEMOID 129	100.00	4/26/2013	1,442,560.00	0.00	0.00	0.00	0.00	0.00	1,442,560.00
H.003854	BOSSIER CONG RELIEF NORTH-SOUTH CORR	4/26/2013	DEMOID 125	100.00	4/26/2013	950,000.00	0.00	0.00	0.00	0.00	0.00	950,000.00

Project Number	Project Description	Original FHWA Auth Date	Funding Source	Percent of Federal Share	FHWA Transaction Date	Federal Funds Amount	State Funds Amount	Converted Funds Amount	Local Funds Amount	Advance Construction Funds	Other Funds	Total of All Funds
H.003854	BOSSIER CONG RELIEF NORTH-SOUTH CORR	4/26/2013	DEMOID 125	100.00	4/26/2013	838,157.00	0.00	0.00	0.00	0.00	0.00	838,157.00
H.003854	BOSSIER CONG RELIEF NORTH-SOUTH CORR	4/26/2013	STP>200K	80.00	4/26/2013	552,000.00	6,000.00	0.00	132,000.00	0.00	0.00	690,000.00
H.003854	BOSSIER CONG RELIEF NORTH-SOUTH CORR	4/26/2013	STP>200K	80.00	6/25/2013	712,732.52	178,183.13	0.00	0.00	0.00	0.00	890,915.65
H.007891	I-220-BROWNLEE ROAD	3/1/2000	STP FLEX	80.00	8/21/2012	-93,601.13	-23,400.28	0.00	0.00	0.00	0.00	-117,001.41
H.007891	I-220-BROWNLEE ROAD	3/1/2000	STP FLEX	80.00	8/21/2012	-43,582.61	-10,895.65	0.00	0.00	0.00	0.00	-54,478.26
H.007914	JEFFERSON-PAIGE ROAD (I-220-US80)	8/1/2001	EB	80.00	8/24/2012	-152,171.28	-38,042.82	0.00	0.00	0.00	0.00	-190,214.10
H.008667	I-49 NORTH (US 71 (SOUTH) TO LA 2)	9/7/2006	DEMOID1602	80.00	8/1/2012	-16,000.00	-4,000.00	0.00	0.00	0.00	0.00	-20,000.00
Right of Way Phase Total												\$4,030,523.75
Utility Phase												
H.000102	CROSS BAYOU AND RELIEF BRIDGES	8/7/2012	FBR-ON/OFF	80.00	8/8/2012	192,000.00	48,000.00	0.00	0.00	0.00	0.00	240,000.00
H.000103	UNION PACIFIC RR OVERPASS NEAR GREEN	6/21/2006	FBR-ON/OFF	80.00	2/25/2013	-88,864.49	-22,216.12	0.00	0.00	0.00	0.00	-111,080.61
H.000106	JEFFERSON PAIGE ROAD(I220-US 80)	8/1/2001	EB	80.00	8/14/2012	-2,254.87	-563.72	0.00	0.00	0.00	0.00	-2,818.59
H.001737	I-49 NORTH (LA 168 - ARKANSAS STATE LINE	11/23/2004	DEMOID 112	100.00	12/6/2012	-6,709.92	0.00	0.00	0.00	0.00	0.00	-6,709.92
H.003506	I-49 NORTH (LA 170 TO US 71)	8/7/2008	DEMOID1302	80.00	10/22/2012	-1,238,355.53	-309,588.88	0.00	0.00	0.00	0.00	-1,547,944.41
H.007891	I-220-BROWNLEE ROAD	3/1/2000	STP FLEX	80.00	8/21/2012	-35,506.57	-8,876.64	0.00	0.00	0.00	0.00	-44,383.21
H.007914	JEFFERSON-PAIGE ROAD (I-220-US80)	8/1/2001	EB	80.00	8/24/2012	-9,205.24	-2,301.31	0.00	0.00	0.00	0.00	-11,506.55
H.008667	I-49 NORTH (US 71 (SOUTH) TO LA 2)	9/7/2006	DEMOID1602	80.00	8/1/2012	16,000.00	4,000.00	0.00	0.00	0.00	0.00	20,000.00
H.008667	I-49 NORTH (US 71 (SOUTH) TO LA 2)	9/7/2006	DEMOID 115	100.00	9/7/2012	81,586.45	0.00	0.00	0.00	0.00	0.00	81,586.45
H.008667	I-49 NORTH (US 71 (SOUTH) TO LA 2)	9/7/2006	DEMOID 115	100.00	12/6/2012	-15,938.10	0.00	0.00	0.00	0.00	0.00	-15,938.10
Utility Phase Total												\$-1,107,248.27
Fiscal Year 2013 Total												\$37,315,977.69

Annual Listing of Federally Obligated Projects for Fiscal Year 2013 (Transit)

Project Number	Project Name	Description	Funding Source	Total Cost	Federal Share	Local Share
FTA Section 5307 Projects						
5307-2013-01	PREVENTIVE MAINTENANCE	OPERATIONS	FTA SECTION 9	\$3,263,648	\$2,610,918	\$652,730
5307-2013-02	NON-FIXED ROUTE ADA PARATRANSIT SERVICE	OPERATIONS	FTA SECTION 9	\$326,341	\$261,073	\$65,268
5307-2013-03	PROJECT ADMINISTRATION	ADMINISTRATION	FTA SECTION 9	\$36,363	\$29,090	\$7,273
5307-2013-04	LANDSCAPING/SCENIC BEAUTIFICATION	OPERATIONS	FTA SECTION 9	\$16,719	\$13,375	\$3,344
5307-2013-05	REHAB/RENOVATE SHELTERS	OPERATIONS	FTA SECTION 9	\$26,511	\$21,209	\$5,302
5307-2013-06	TRAVEL	ADMINISTRATION	FTA SECTION 9	\$8,489	\$6,791	\$1,698
5307-2013-07	METROPOLITAN PLANNING – LONG TERM TRANSIT PLANNING SYSTEM LEVEL	ADMINISTRATION	FTA SECTION 9	\$37,500	\$30,000	\$7,500
5307-2013-08	BUS, CNG TECHNOLOGY, 40FT	CAPITAL	FTA SECTION 9	\$571,745	\$485,983	\$85,762
FTA Section 5307 Total						\$3,458,439.00
Other FTA Funding Sections Projects						
5316-2013	JARC FUNDING	EXTENDED HOURS SERVICE	FTA SECTION 3	\$498,887	\$249,443	\$249,443
5317-2013	NEW FREEDOM	EXTENDED HOURS SERVICE - ADA	FTA SECTION 3	\$201,619	\$100,809	\$100,809
5339-2013	BUS, CNG TECHNOLOGY, 40 FT	BUS AND BUS FACILITIES	FTA SECTION 3	\$436,791	\$371,272	\$65,519
Other FTA Funding Sections Projects Total						\$721,524.00
Fiscal Year 2013 Total						\$4,179,963.00

INDIVIDUAL PROJECT TRACKING SHEETS

To aid in understanding the detailed project listings worksheets, significant TIP programmed and obligated projects are individually referenced through project tracking sheets. Minor overlay and geometric improvements do not have tracking sheets developed for them.

Tracking sheets contain the mapped location of the project improvement, project narrative, funding sources and cost estimates by project phase. Ultimately, performance indicators will be incorporated into the tracking analysis.

I-20

WB Off-Ramp at Pines Rd

- Off Ramp
- Street Centerlines
- + + Railroads
- Hydrology

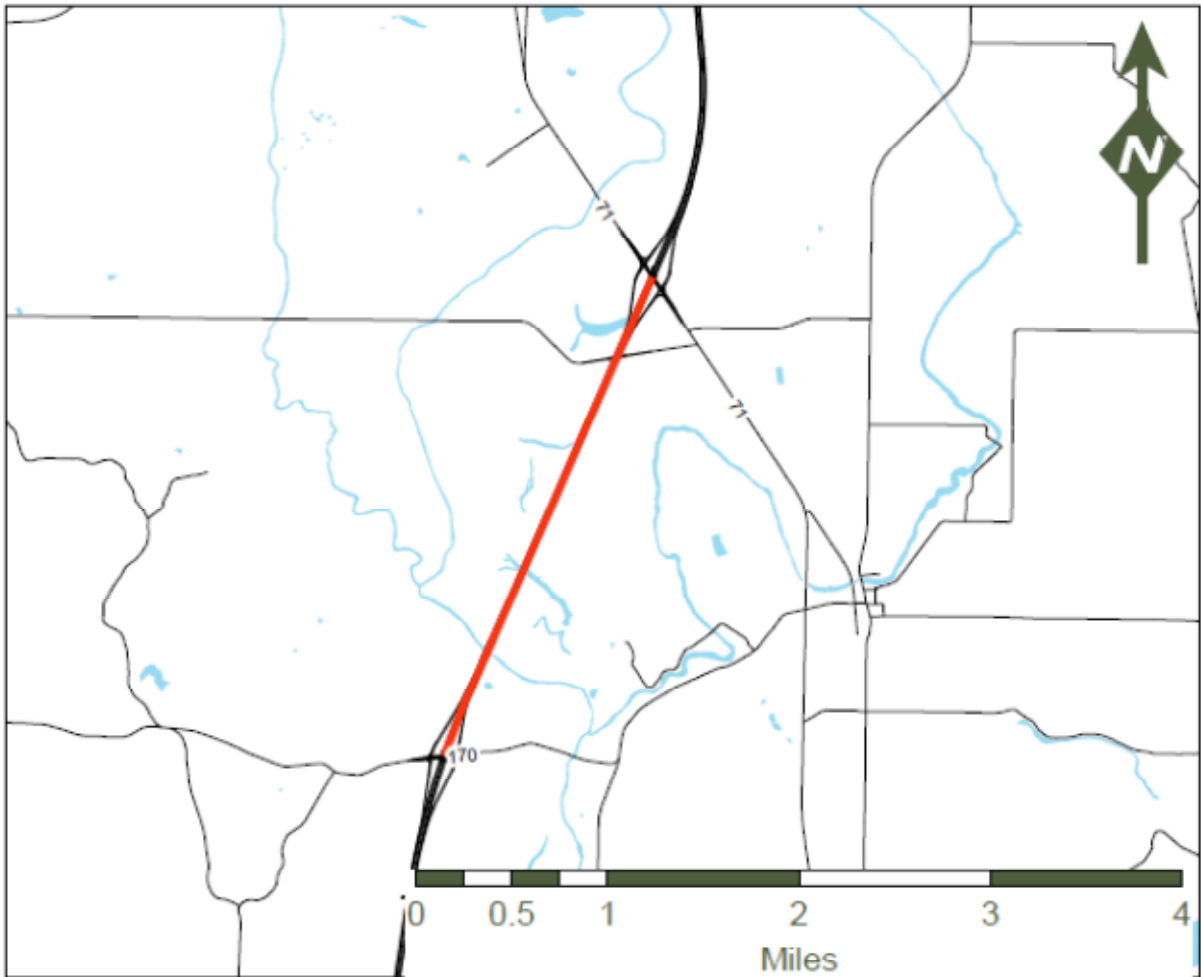


Project Number	Project Description	Funding Source	Federal Funds Amount	State Funds Amount	Other Funds	Total of All Funds
Construction Phase						
H.003240	I-20 WB OFF RAMP IMPROV @ PINES RD	HSIP	9,000.00	1,000.00	0.00	10,000.00

I-49

LA 170 - US 71

- I-49 selection
- Street Centerlines
- + + Railroads
- Hydrology



Project Number	Project Description	Funding Source	Federal Funds Amount	State Funds Amount	Other Funds	Total of All Funds
Engineering Phase						
H.003889	I-49 NORTH (LA 170 TO US 71)	DEMOID1302	-66,466.26	-16,616.57	0.00	-83,082.83
H.005622	I-49 NORTH (LA 170 TO US 71) SEGMENT "E"	DEMOID1302	-176,483.05	-44,120.76	0.00	-220,603.81
Right of Way Phase						
H.003506	I-49 NORTH (LA 170 TO US 71)	DEMOID1302	-988,771.24	-247,192.81	0.00	-1,235,964.05
Utility Phase						
H.003506	I-49 NORTH (LA 170 TO US 71)	DEMOID1302	-1,238,355.53	-309,588.88	0.00	-1,547,944.41

I-49

Martin Luther King, Jr Drive

- MLK
- Street Centerlines
- + + Railroads
- Hydrology

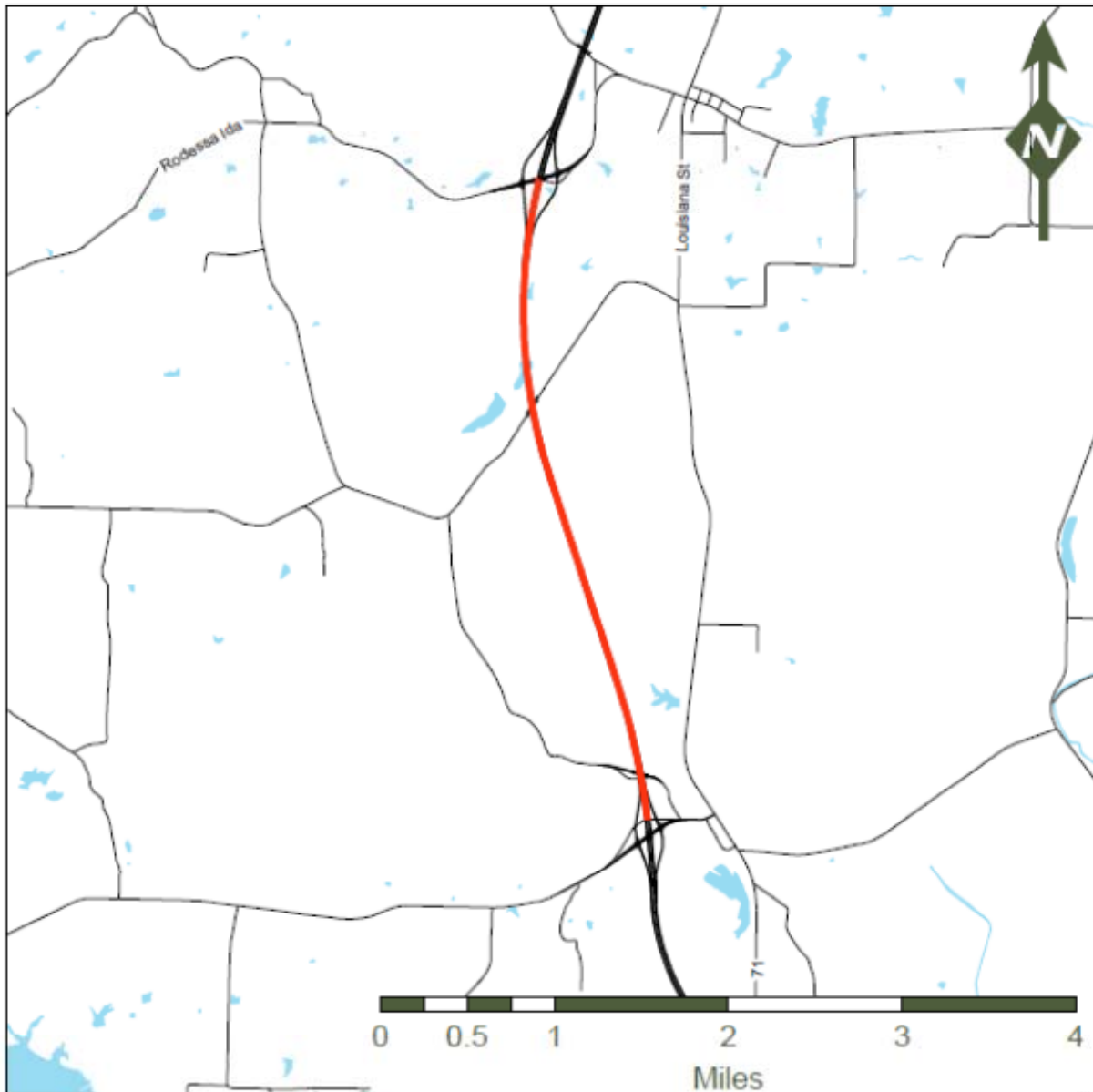


Project Number	Project Description	Funding Source	Federal Funds Amount	State Funds Amount	Other Funds	Total of All Funds
Right of Way Phase						
H.003511	I-49 NORTH (MARTIN LUTHER KING, JR DRIVE)	DEM01D1302	-4,656,989.72	-527,443.31	0	-5,184,433.03

I-49

Mira-Myrtis Rd- LA 168, Segment B

- I-49
- Street Centerlines
- +— Railroads
- Hydrology

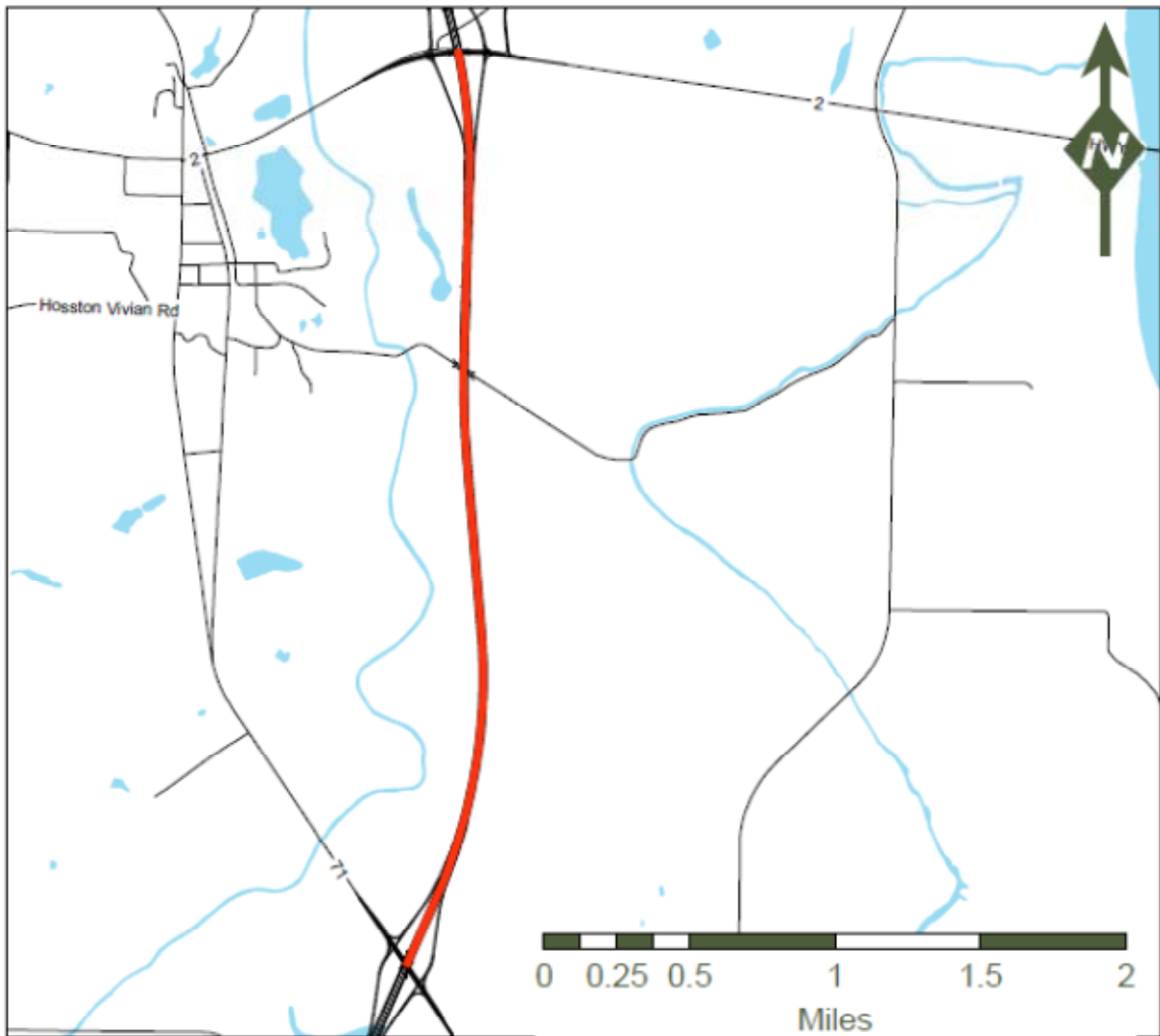


Project Number	Project Description	Funding Source	Federal Funds Amount	State Funds Amount	Other Funds	Total of All Funds
H.003512	I-49 NORTH(MIRA-MYRTIS RD TO LA 168	NHS DEMO101105	-485,083.10	-121,270.77	0.00	-606,353.87

I-49

US 71 - LA 2, Segment D

- I-49
- Street Centerlines
- + + + Railroads
- Hydrology



Project Number	Project Description	Funding Source	Federal Funds Amount	State Funds Amount	Other Funds	Total of All Funds
Right of Way Phase						
H.008667	I-49 NORTH (US 71 (SOUTH) TO LA 2)	DEMOID1602	-25,000.00	-4,000.00	0	-29,000.00
Utility Phase						
H.008667	I-49 NORTH (US 71 (SOUTH) TO LA 2)	DEMOID1602 DEMOID 115	81,648.35	4,000.00	0	85,648.35

I-49

LA 169 - LA 530, Segment G

- I-49
- Street Centerlines
- + + + Railroads
- Hydrology



Project Number	Project Description	Funding Source	Federal Funds Amount	State Funds Amount	Other Funds	Total of All Funds
Engineering Phase						
H.003896	I-49 NORTH (LA 169 - LA 530)	DEMOID1702 RCAF	-239,485.61	-59,871.41	0.00	-299,357.02

I-49

LA 173 - LA 169, Segment H

- I-49
- Street Centerlines
- + + Railroads
- Hydrology

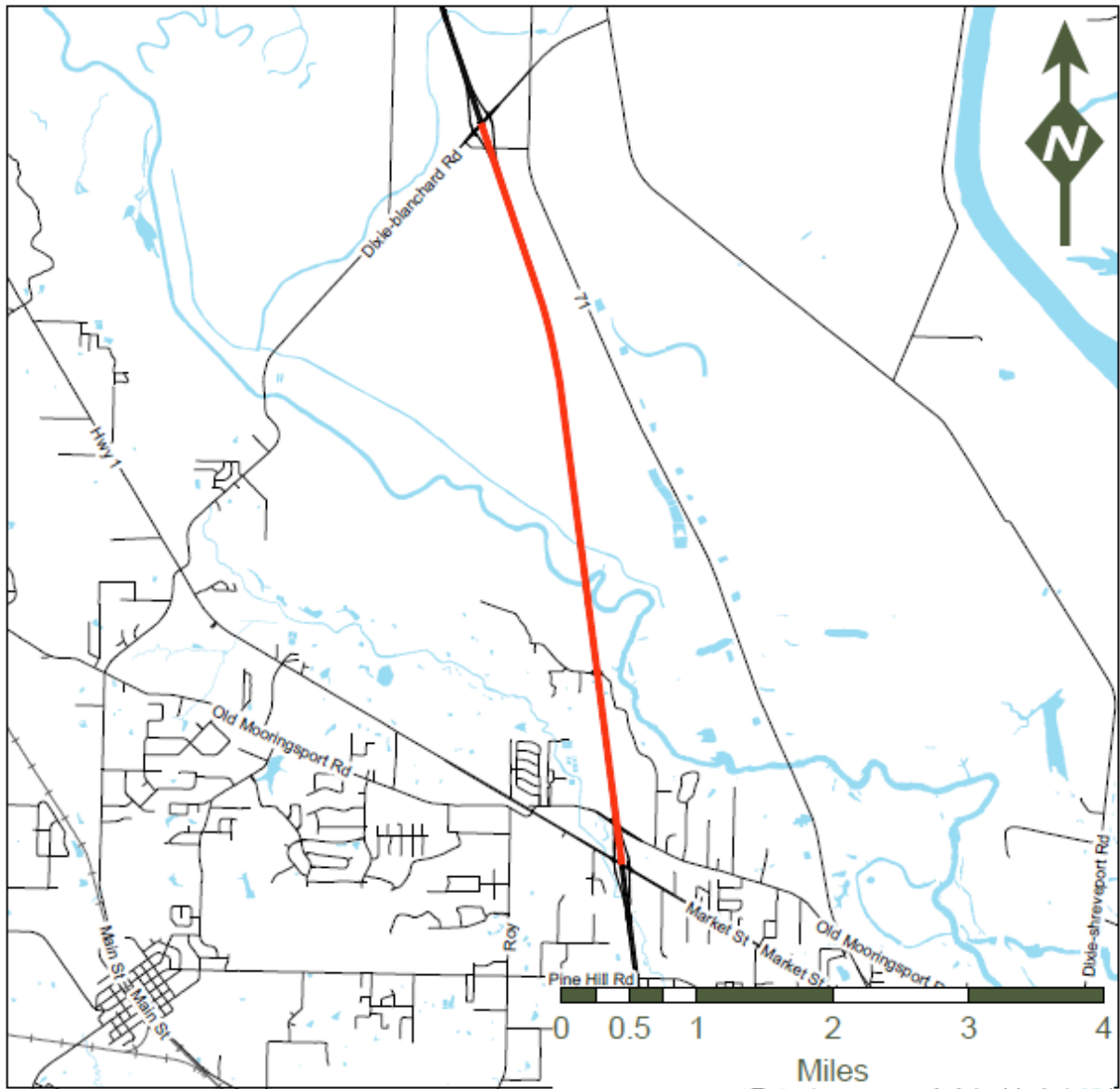


Project Number	Project Description	Funding Source	Federal Funds Amount	State Funds Amount	Other Funds	Total of All Funds
Planning / Environmental Phase						
H.003504	I-49 NORTH (LA 173-LA 169)	DEMOID1702	-32,022.89	-8,005.72	0	-40,028.61
Right of Way Phase						
H.003504	I-49 NORTH (LA 173-LA 169)	DEMOID1702	32,022.89	8,005.72	0	40,028.61

I-49

LA 1 - LA 173, Segment I

- I-49 selection
- Street Centerlines
- + + Railroads
- Hydrology

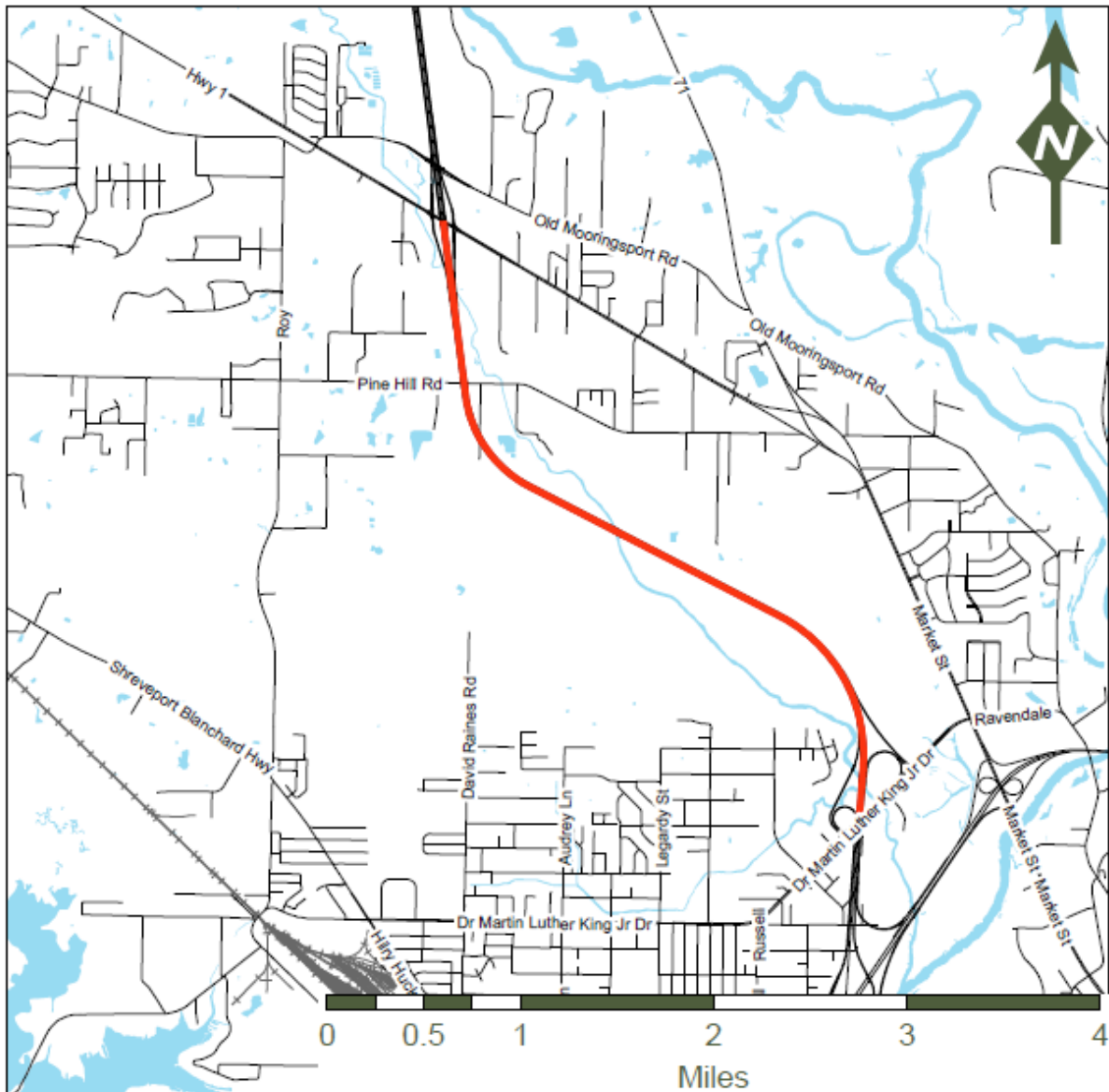


Project Number	Project Description	Funding Source	Federal Funds Amount	State Funds Amount	Other Funds	Total of All Funds
Construction Phase						
H.003497	I-49 NORTH (LA 1 - LA 173) SEG I	DEM0ID1302 DEM0ID1302 ARRA >200K	529,184.56	130,488.59	0.00	659,673.15

I-49

MLK Jr Dr - LA 1, Segment J

- I-49 selection
- Street Centerlines
- + + Railroads
- Hydrology

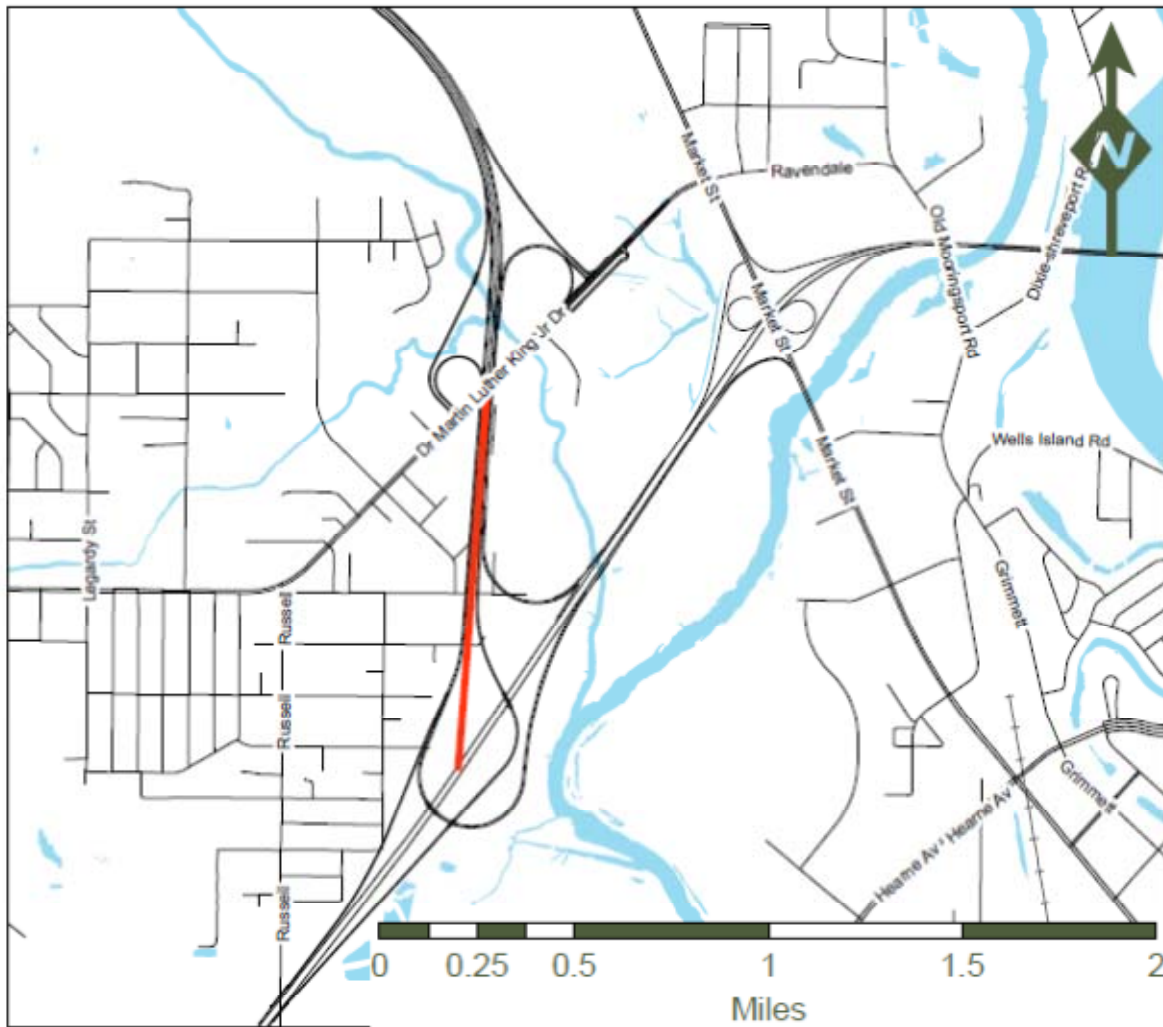


Project Number	Project Description	Funding Source	Federal Funds Amount	State Funds Amount	Other Funds	Total of All Funds
Construction Phase						
H.003496	I-49 NORTH (MLK JR DR - LA 1) SEG J	NHS	99,553.61	13,224,136.79	52,796,993.57	66,120,683.97

I-49

I-220 - MLK, Segment K

- I-49
- Street Centerlines
- + + Railroads
- Hydrology

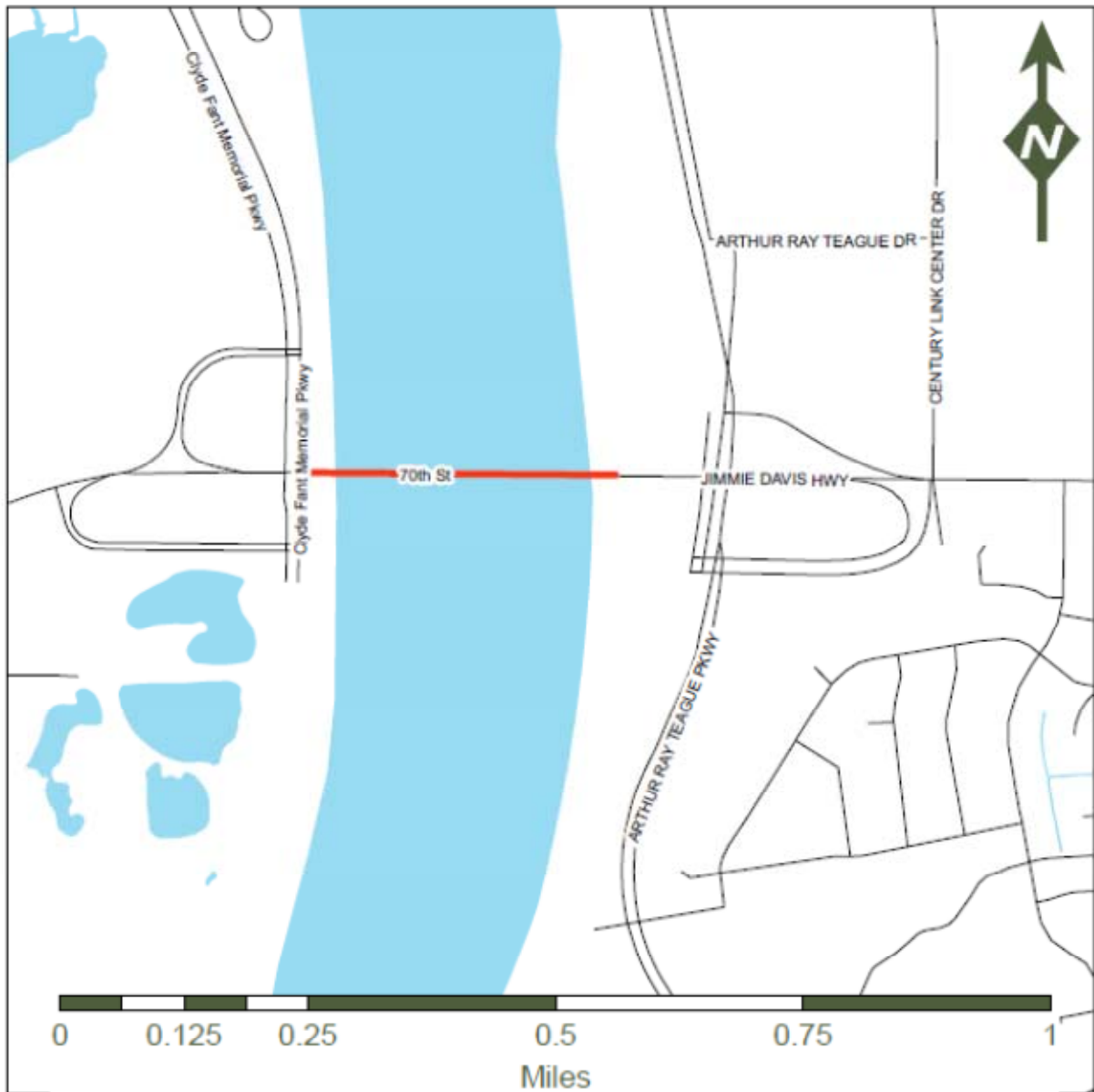


Project Number	Project Description	Funding Source	Federal Funds Amount	State Funds Amount	Other Funds	Total of All Funds
Engineering Phase						
H.003886	I-49 NORTH (I-220 TO MARTIN LUTHER KING,	DEMOID1302	942,064.42	235,516.11	0	1,177,580.53
		NHS				
H.003905	I-49 NORTH (I-220 TO MARTIN LUTHER KING,	DEMOID1105	219,903.25	54,975.81	0	274,879.06
		DEMOID1602				
Right of Way Phase						
H.003495	I-49 NORTH (I-220-MLK DRIVE) SEG K	DEMOID1302	6,216,000.00	1,554,000.00	-6,750,000.00	1,020,000.00

JIMMIE DAVIS BRIDGE

LA 511

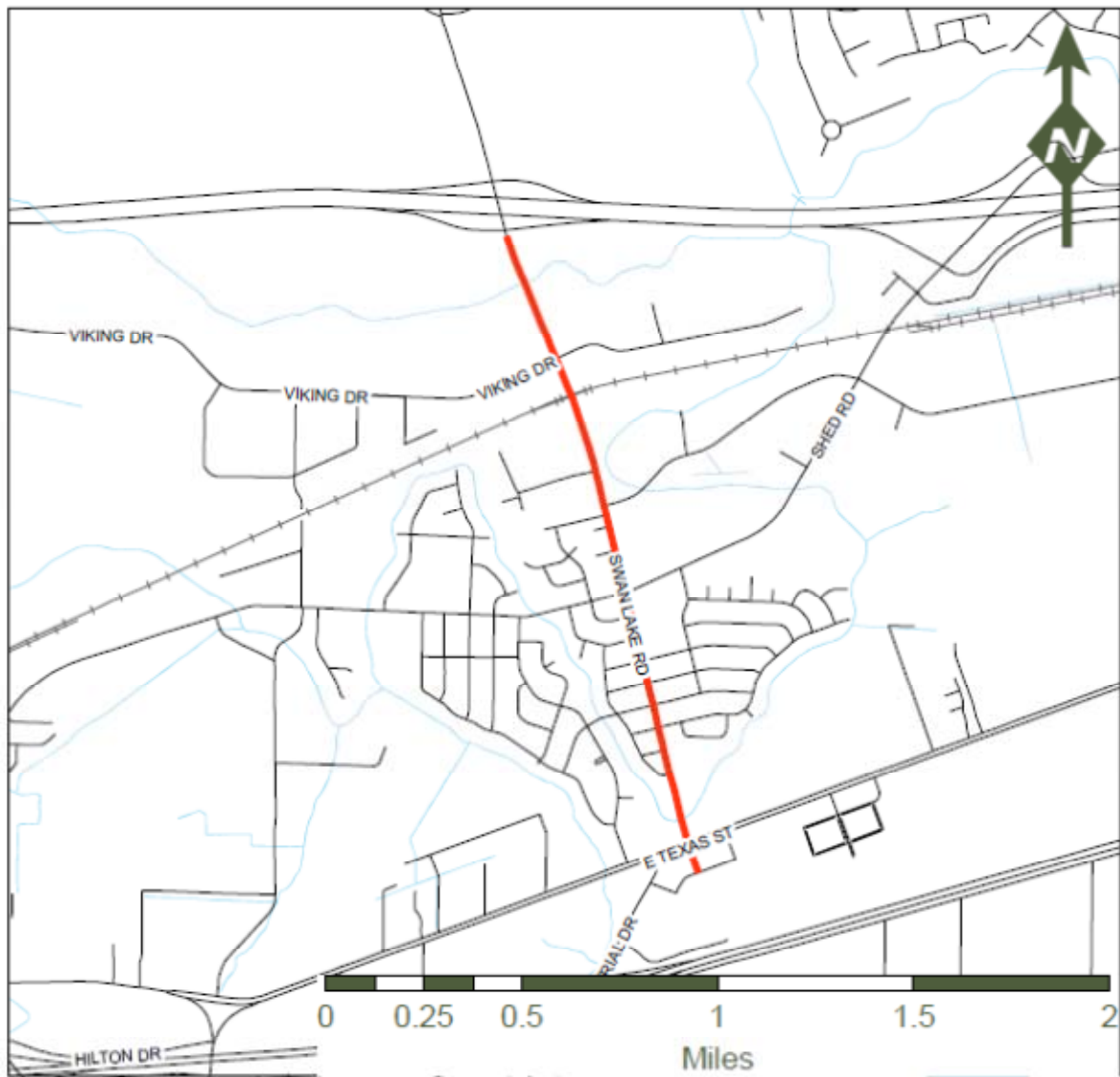
- LA 511
- Street Centerlines
- + + + Railroads
- Hydrology



Project Number	Project Description	Funding Source	Federal Funds Amount	State Funds Amount	Other Funds	Total of All Funds
Planning / Environmental Phase						
H.001779	JIMMIE DAVIS BRIDGE (LA 511)	NHPP	847,606.52	211,901.63	0.00	1,059,508.15

Bossier Congestion Relief North-South Corridor

- Swan Lake
- Street Centerlines
- + + Railroads
- Hydrology

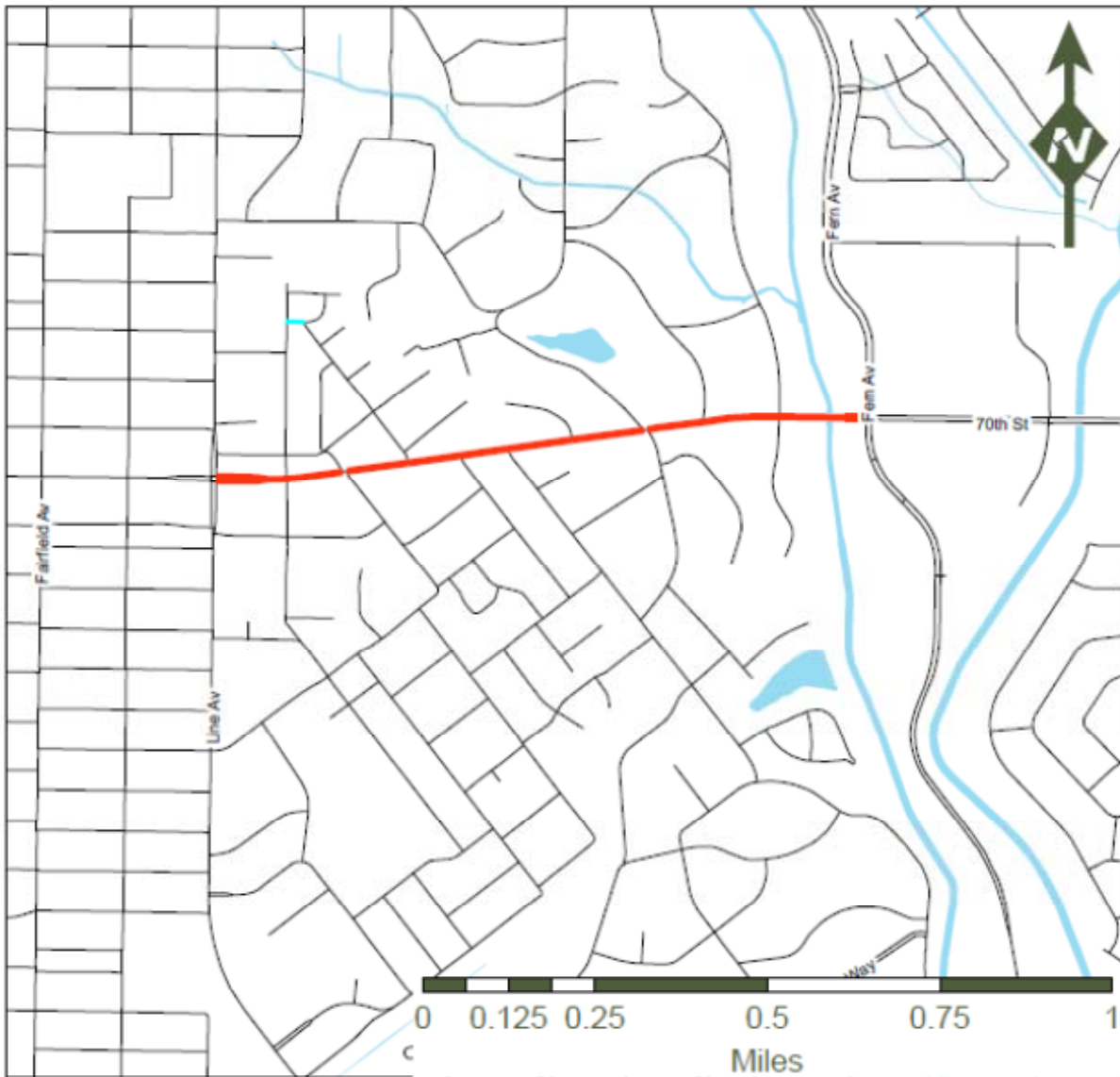


Project Number	Project Description	Funding Source	Federal Funds Amount	State Funds Amount	Other Funds	Total of All Funds
Right of Way Phase						
H.003854	BOSSIER CONG RELIEF NORTH-SOUTH CORR	DEMOID 1702 DEMOID 129 DEMOID 125 STP > 200K	5,347,739.08	222,783.13	306,972.40	5,877,494.61

LA 511

LA 523- Fern Av

- LA 511
- Street Centerlines
- + + Railroads
- Hydrology



Project Number	Project Description	Funding Source	Federal Funds Amount	State Funds Amount	Other Funds	Total of All Funds
Construction Phase						
H.001769	LA 511: LA 523 - FERN AV	HSIP HFL STP	5,470,068.87	715,102.30	3,350,933.60	6,185,171.17
Planning / Environmental Phase						
H.001769	LA 511: LA 523 - FERN AV	HSIP	73,391.75	8,154.64	73,391.75	154,938.14