

NORTHWEST LOUISIANA COUNCIL OF GOVERNMENTS

Annual Listing of Federally Obligated Projects

Fiscal Year 2017

Disclaimer

The preparation of this document was financed through grants from and disseminated under the sponsorship of the Federal Highway Administration, the Louisiana Department of Transportation and Development, and the Northwest Louisiana Council of Governments. The United States Government and the State of Louisiana assume no liability for its contents or use thereof.

Non-Discrimination Statement

The Northwest Louisiana Council of Governments (NLCOG) complies with the Americans with Disabilities Act of 1990, Section 504 of the Rehabilitation Act of 1973, Title VI of the Civil Rights Act of 1964, and other federal equal opportunity laws and, therefore, does not discriminate on the basis of race, sex, color, age, national origin, religion or disability; in admission to, access to, treatment in or operations of its programs, services, or activities. NLCOG does not discriminate in its hiring or employment practices.

Questions, concerns, complaints, or requests for additional information regarding the non-discrimination policies may be directed to the designated Title VI, ADA and Section 504 Compliance Coordinator:

Lisa M. Frazier
Public Involvement Coordinator
(318) 841-5950 (voice)
lisa.frazier@nlcog.org
625 Texas Street, Suite 200
Shreveport, LA 71101

Purpose of this Report

The Annual Listing of Obligated Projects is a requirement of metropolitan planning areas, per § 450.332:

- (a) In metropolitan planning areas, on an annual basis, no later than 90 calendar days following the end of the program year, the State, public transportation operator(s), and the MPO shall cooperatively develop a listing of projects (including investments in pedestrian walkways and bicycle transportation facilities) for which funds under 23 U.S.C. or 49 U.S.C. Chapter 53 were obligated in the preceding program year.
- (b) The listing shall be prepared in accordance with § 450.314(a) and shall include all federally funded projects authorized or revised to increase obligations in the preceding program year, and shall at a minimum include the TIP information under § 450.324(e)(1) and (4) and identify, for each project, the amount of Federal funds requested in the TIP, the Federal funding that was obligated during the preceding year, and the Federal funding remaining and available for subsequent years.
- (c) The listing shall be published or otherwise made available in accordance with the MPO's public participation criteria for the TIP.

The Northwest Louisiana Council of Governments (NLCOG) responds to the directive through this report. It lists all transportation projects in Northwest Louisiana that were obligated during NLCOG's fiscal year 2017 (July 1, 2015 – June 30, 2017). The Federal Highway Administration (FHWA) defines obligation as the federal government's legal commitment (promise) to pay or reimburse the states or other entities for the federal share of a project's eligible costs¹. Thus, an obligated project is one that has been approved by the federal government for reimbursement, though not necessarily reimbursed yet. Obligated projects were not necessarily initiated or completed in this year. The obligated project cost reflected in this report also may not equal final project cost.

Background

NLCOG is the Metropolitan Planning Organization (MPO) for the Shreveport – Bossier urbanized area. Every metropolitan area with a population of more than 50,000 persons has a designated MPO in order to qualify for federal highway and transit funding. NLCOG, acting in its capacity as the MPO, has responsibility for planning, programming, and coordinating federal-aid transportation investments within the Shreveport – Bossier urbanized area.

¹ Financing Federal Aid Highways Glossary. <http://www.fhwa.dot.gov/reports/fifahwy/ffahappa.htm>. May 10, 2011.

The United States Department of Transportation relies on the MPO to ensure that highway and transit projects that use federal funds are products of a credible planning process and meet local priorities. Transportation legislation – including the Intermodal Surface Transportation Efficiency Act of 1991 (ISTEA), the Transportation Equity Act for the 21st Century (TEA-21), and the Safe, Accountable, Flexible, Efficient Transportation Equity Act: A legacy for Users (SAFETEA-LU) and the most recent transportation authorization Moving Ahead for Progress in the 21st Century (MAP-21) – strengthened the role MPOs play in rationally developed transportation programs. As the MPO, NLCOG is statutorily mandated to assess the transportation needs and deficiencies of the region with direction from public officials; citizens; modal representatives; and federal, state and local planning departments.

The MPO Transportation Policy Committee (“committee”) membership consists of the administrators from Bossier and Caddo Parishes; the mayors of the cities of Bossier City and Shreveport; the executive director of the Port of Caddo – Bossier, the executive directors of the Metropolitan Planning Commissions of Bossier and Shreveport; the general manager of the local public transit agency and the District IV administrator of LaDOTD. The committee wields final decision-making. Non-voting members include FHWA and FTA. NLCOG represents the perspectives of its local government members, while coordinating its planning efforts with the Louisiana Department of Transportation (LaDOTD), the Federal Transit Administration (FTA) and the Federal Highway Administration (FHWA).

NLCOG is assisted in its planning and programming efforts by a Technical Coordinating Committee (TCC) that is comprised of public works directors, planning directors, and transit operators. The TCC meets as-needed to review proposed amendments to the Transportation Improvement Program (TIP). Working groups and ad hoc groups are also created and appointed, as needed.

Regional Transportation Plan

NLCOG develops a minimum 20-year regional long range transportation plan (LRTP) describing the transportation needs and goals for the region. It is the chief legal document reflecting the resources, the fundamental planning process, and the selection of projects for the region. The LRTP includes the needed transportation system and the fiscally-constrained LRTP. The fiscally-constrained LRTP, required by federal law, identifies the multimodal transportation system that can be achieved over a minimum 20-year planning horizon with the “reasonably available” financial resources over that time. Federal law requires NLCOG to update the plan every five years. NLCOG adopted Mobility 2014, a comprehensive multi-modal transportation plan for Bossier and Caddo Parishes on April 15, 2016.

The LRTP incorporates policy considerations and related long-term impacts. Analysis of land use changes, population growth and density patterns, economic development and commercial and residential zoning help identify and rank projects. All regionally significant projects are identified in the plan regardless of their funding source; and, in many cases, projects are funded with combinations of state, federal, and local funds.

Transportation Improvement Program

A Transportation Improvement Program (TIP) is a prioritized, financially-constrained multi-year program for implementation of federally-funded transportation improvement projects in a designated MPO region. The TIP serves as a planning tool to ensure the most effective use of limited funding for transportation improvements. The TIP includes the adopted list of public transit, roadway, bicycle, pedestrian, and air quality projects that will receive federal transportation funds in the near future. A transportation improvement is not eligible for federal funding unless it is documented within the TIP. The TIP also includes the projects in Northwest Louisiana that are intended to only use state funds. The TIP implements the fiscally-constrained LRTP. NLCOG's TIP covers a three-year period, though specific projects and their funding levels are usually identified for the first three or four-year period.

The 2015-2018 TIP was adopted on November 21, 2014, and has been amended regularly since adoption. The projects in this report are from the 2015-2018 TIP. The 2015-2018 TIP defines the projects eligible for federal funding in FY2017, which covers the period from July 1, 2015 to June 30, 2017.

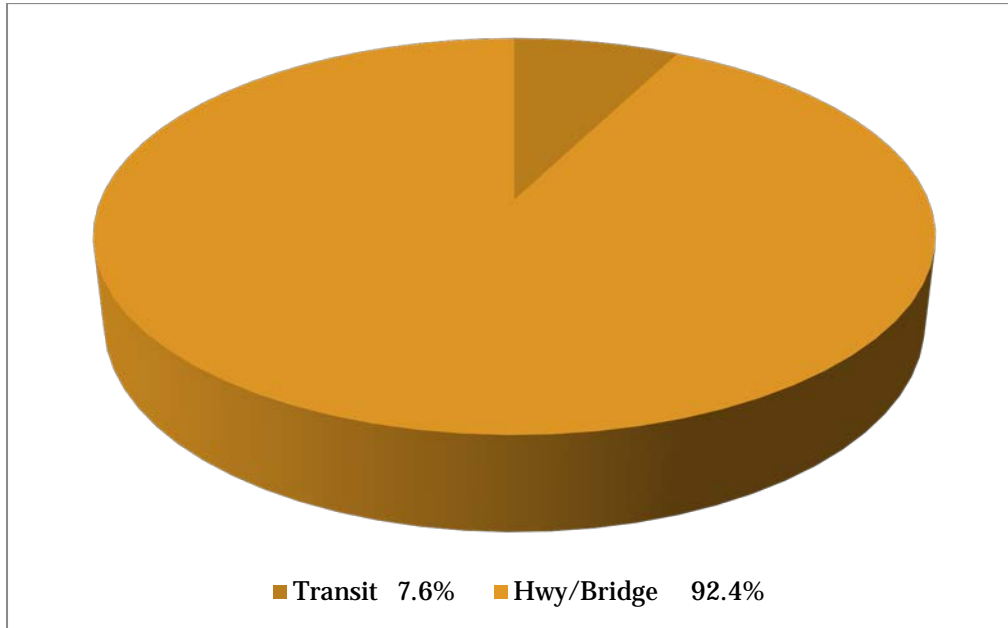
Public Involvement

NLCOG aims to proactively engage the public in the regional transportation planning process and embraces federal requirements that MPOs provide the public with complete information, timely public notice, full public access to key decisions, and early and continuing involvement in developing the LRTP, TIP, and other products. NLCOG's public involvement strategies include presenting information and educating the public, continually soliciting public input, helping information flow between the public and decision makers, and considering and responding to public concerns.

Summary of Projects

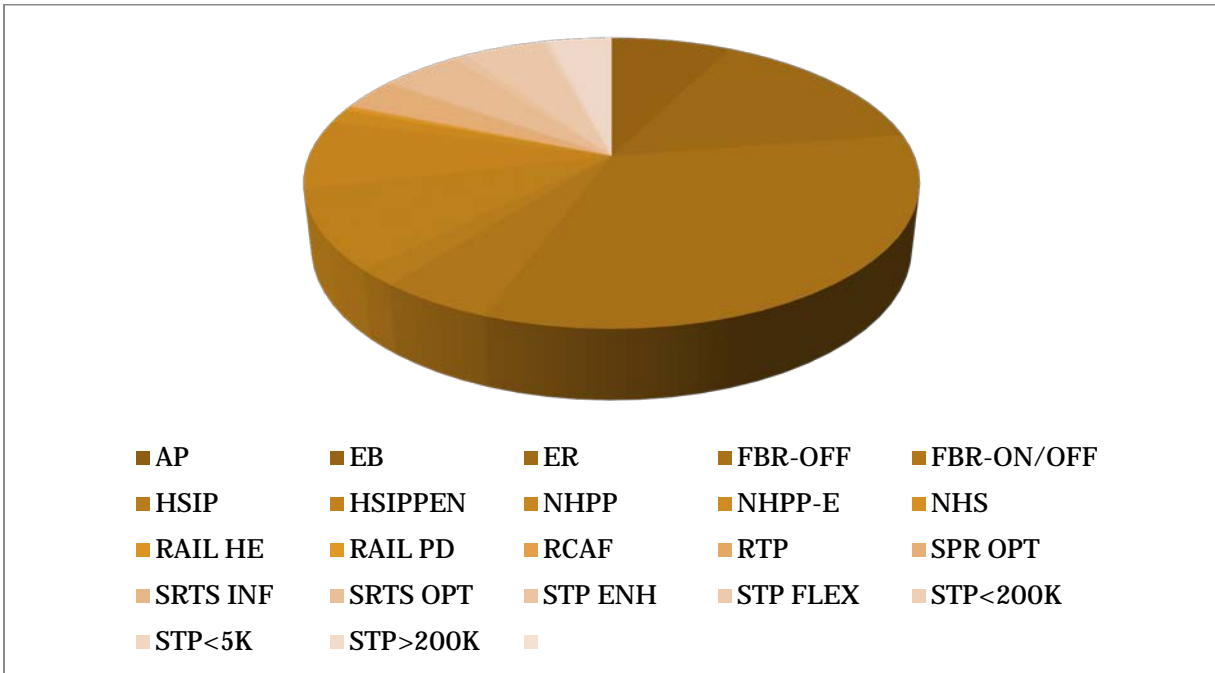
In FY 2017, more than 240 projects were scheduled for a total federal cost of \$41,141,123.10. Of this total, \$38,030,126.10 (92.4%) was for highway/bridge projects and \$3,110,997.00 (7.6%) was for transit projects. The chart below illustrates these percentages:

FY 2017 Federally Obligated Projects Summary



The largest percentage of highway/bridge funds (25.72% total) obligated was the Highway Safety Improvement Program (HSIPPEN) funding stream which provides funding to achieve a significant reduction in traffic fatalities and serious injuries on all public roads through the implementation of infrastructure-related highway safety improvements. This program had a federal funding total of \$9,782,061.99. In the chart below, the funding by category is illustrated with corresponding percentage of funding. Negative numbers indicate money that was de-obligated. In some cases, it was money that the LaDOTD advanced construction with state funds and now the state funds are removed and federal funds added.

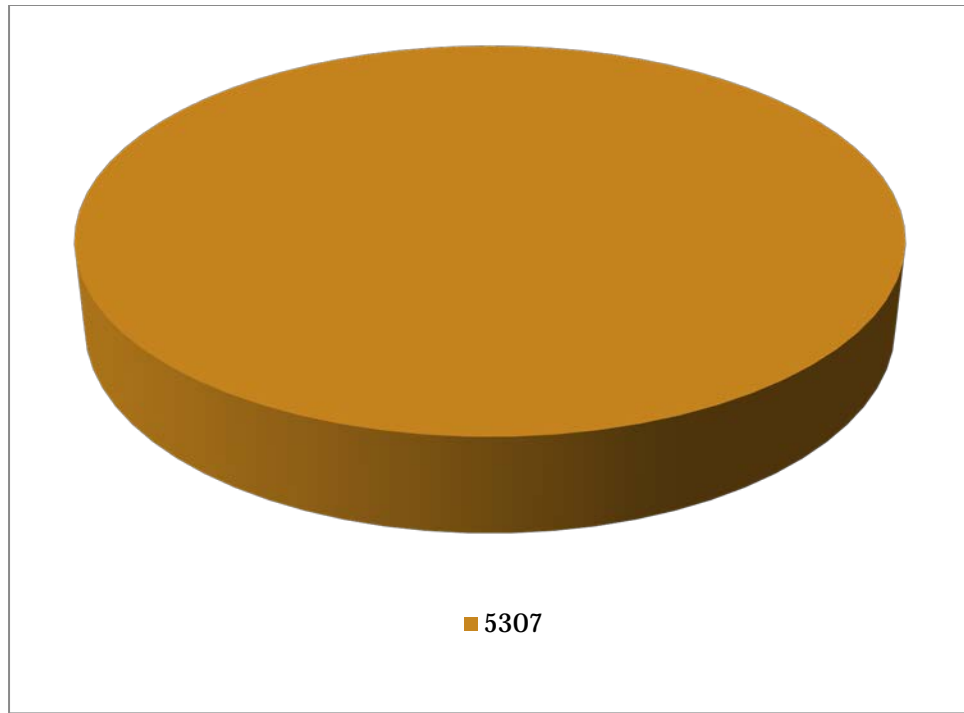
FY 2017 Federally Obligated Highway/Bridge Projects by Funding Category



Prefix	Total Federal Funds	Total All Funds	Percentage Fed Funds
AP	(227.00)	(227.00)	0.00%
EB	\$84,977.96	\$96,332.82	0.22%
ER	\$166,620.94	\$208,276.18	0.44%
FBR-OFF	\$368,861.45	\$411,385.27	0.97%
FBR-ON/OFF	\$57,547.46	\$71,934.31	0.15%
HSIP	\$2,053,405.23	\$2,036,102.18	5.40%
HSIPPEN	\$9,782,061.99	\$9,782,061.99	25.72%
NHPP	\$8,619,418.58	\$2,548,173.67	22.66%
NHPP-E	\$1,651,994.60	\$2,025,988.66	4.34%
NHS	(9560.90)	(4,332,430.87)	(0.03%)
RAIL HE	(229,282.93)	(241,637.48)	(0.60%)
RAIL PD	(308,706.32)	\$576,916.33	(0.81%)
RCAF	\$124,831.25	\$156,039.06	0.33%
RTP	\$98,847.00	\$162,383.75	0.26%
SPR OPT	\$3,730,880.76	\$4,663,600.95	9.81%
SRTS INF	\$363,226.50	\$363,226.50	0.96%
SRTS OPT	\$54,506.91	\$54,506.91	0.14%
STP ENH	\$940,562.58	\$1,039,681.96	2.47%
STP FLEX	\$5,593,379.23	\$6,875,166.79	14.71%
STP<200K	\$333,178.75	\$416,473.44	0.88%
STP<5K	\$175,706.43	\$219,633.04	0.46%
STP>200K	\$4,377,895.63	\$5,472,369.53	11.51%
Total	\$38,030,126.10	\$32,882,392.54	100.00%

The largest percentage of transit funds (100% total) obligated was the FTA Section 5307 Capital Budget category of funding. These funds were used for administration, operations, planning, and capital improvements. The chart below illustrates these percentages:

FY 2017 Federally Obligated Transit Projects by FTA Funding Category



Prefix	Total Federal Funds	Total All Funds	Percentage of Funds
Section 5307	\$3,110,997	\$3,888,747	100.00%
<i>Total</i>	<i>\$3,500,000</i>	<i>\$4,345,588</i>	<i>100.00%</i>

Obligation Report

This report is organized by project phase for highway/bridge projects and funding category for transit projects. The TIP identification (ID), project name, description, funding source and the total obligation amount are shown for each project. The TIP ID is a unique number given to each project selected for inclusion into the NLCOG TIP. A brief description of each project is provided. The obligation is the federal share for that particular TIP project in the federal fiscal year. The obligation amounts for each of the projects are added up to show the total obligation by project phase.

While federal funding is included in this report, local or state funds are also reported in most cases. In FY2017, federal funding was distributed through the following funding categories:

- **Federal Bridge Replacement On/Off System (FBR)** are federal funds used for the replacement, rehabilitation or widening of any federal aid facility on- or off-system.
- **Surface Transportation Program (STP >200K)** is used within the metropolitan area to fund roadway reconstruction, rehabilitation, traffic operational improvements, bicycle / pedestrian facilities, and studies.
- **Surface Transportation Program (STP FLEX)** is a flexible funding category that is used to fund roadway reconstruction, Intelligent Transportation System (ITS) projects, or bridge / interchange work.
- **Surface Transportation Program Transportation Enhancements (STP ENH)** is flexible funding that may be used by states and localities for projects to preserve and improve the conditions and performance on any Federal-aid highway, bridge and tunnel projects on any public road, pedestrian and bicycle infrastructure, and transit capital projects, including intercity bus terminals..
- **STP Rail Hazard Elimination and Highway Crossings Protective Devices (RAIL HE/PD)** are safety set aside funds that provide programs to reduce the number and severity of crashes at public highway-rail grade crossings (Section 130) and correct or improve hazardous locations, sections, and elements on any public road, public surface transportation facility, or public bike/ped path or trail.
- **Interstate Maintenance (IM)** provides funding for resurfacing, restoring, rehabilitation and reconstructing most route on the Interstate System.
- **National Highway System (NHS)** funds improvements to the dynamic roadway system that can change in response to future travel and trade demands which includes the interstate system, as well as other roads important to the nation's economy, defense and mobility.
- **Highway Safety Improvement Program (HSIP)** provides funding to achieve a significant reduction in traffic fatalities and serious injuries on all public roads through the implementation of infrastructure-related highway safety improvements.

- **Recreational Trails Program (RTP)** provides funds to the States to develop and maintain recreational trails and trail-related facilities for both non-motorized and motorized recreational trail uses.
- **Equitable Bonus (EB)** provides funding to states based on equity considerations. These include a minimum rate of return on contributions to the Highway Account of the Highway Trust Fund, and a minimum increase relative to the average dollar amount of apportionments under TEA-21.
- **Demonstration Projects (DEMO)** funding refers to line items, for each individual project, within the past transportation authorizations (i.e. ISTEA, TEA-21, SAFETEA-LU, but not MAP-21) that explicitly devotes funding to the line item project utilizing funds from any number of programs (i.e. STP, HSIP, IM, etc.) sources.
- **National Highway Performance Program (NHPP)** supports the condition and performance of the NHS; provides support for the construction of new facilities on the NHS; and ensures that investments of federal-aid funds in highway construction are directed to support progress toward the achievement of performance targets established in a state's asset management plan for the NHS.
- **FTA Section 5307** funds are used for capital, operating assistance, preventive maintenance and planning purposes for mass transportation improvements in urbanized areas.

Some projects include a mixture of different TIP funding categories, and thus one project line under one funding source does not necessarily equal the total obligated funding for that project. The tables below are based on records obtained from LaDOTD, FHWA, and FTA, as NLCOG does not directly participate in the obligation process.

Technical Terms

Various tables, figures, and project tracking sheets within this report include the following technical terms to describe and aid in understanding the projects.

- **Project numbers** given by the LaDOTD as the state transportation project number.
- **Project Description** shows the general project name with a brief description often referenced by a local street, road or highway.
- **Total cost** shows the total cost for the project's given phase.
- **Federal funds** are the federal share from the federal government to complete the project (obligation).
- **Funding source** refers to the category of funding source for the primary source of funds.
- **Percent of federal share** refers to the funding split of federal to local/state funds. For examples, 80% means the federal share is 80% of the project cost and local/state funds make up the remaining 20%.
- **Converted/advance construction funds** refer to funds the state of Louisiana advanced in place of federal funds for that phase. Negative numbers is money that was de-obligated. In some cases, it is money that the state advanced construction with state funds and now the state funds are removed and the federal funds are added.
- **Authorization date/transaction date** are the dates the transactions are entered into the system.

Annual Listing of Federally Obligated Projects for Fiscal Year 2017 (Highway) – Bossier Parish

Project Number	Project Description	Funding Source	Percent of Federal Share	FHWA Transaction Date	Federal Funds Amount	State Funds Amount	Converted Funds Amount	Local Funds Amount	Advance Construction Funds	Other funds	Total of all funds
H.000118.5	BAYOU FIFI BRIDGE (HBI)	STP FLEX	80.00	10/26/2016	0.00	0.00	0.00	0.00	0.00	0.00	0.00
H.000397.6	UNION PACIFIC RR O/P NEAR BENTON	RCAF	80.00	8/29/2016	81,517.63	20,379.41	0.00	0.00	0.00	0.00	101,897.04
H.001159.3	UNION PACIFIC RAILROAD OVERPASS NEAR BEN	STP<5K	80.00	8/25/2016	134,517.97	33,629.49	0.00	0.00	0.00	0.00	168,147.46
H.001159.3	UNION PACIFIC RAILROAD OVERPASS NEAR BEN	STP<5K	80.00	8/25/2016	0.00	0.00	0.00	0.00	0.00	0.00	0.00
H.001159.4	UNION PACIFIC RAILROAD OVERPASS NEAR BEN	STP<5K	80.00	12/28/2016	41,188.46	10,297.12	0.00	0.00	0.00	0.00	51,485.58
H.001159.4	UNION PACIFIC RAILROAD OVERPASS NEAR BEN	RCAF	80.00	12/28/2016	0.00	0.00	0.00	0.00	0.00	0.00	0.00
H.001159.4	UNION PACIFIC RAILROAD OVERPASS NEAR BEN	STP<5K	80.00	12/28/2016	0.00	0.00	0.00	0.00	0.00	0.00	0.00
H.001159.4	UNION PACIFIC RAILROAD OVERPASS NEAR BEN	STP<5K	80.00	12/28/2016	0.00	0.00	0.00	0.00	0.00	0.00	0.00
H.001654.2	MARTIN CREEK BRIDGE	FBR-ON/OFF	80.00	12/21/2016	0.00	0.00	0.00	0.00	0.00	0.00	0.00
H.001654.3	MARTIN CREEK BRIDGE	FBR-ON/OFF	80.00	12/21/2016	0.00	0.00	0.00	0.00	0.00	0.00	0.00
H.001654.5	MARTIN CREEK BRIDGE	FBR-ON/OFF	80.00	12/21/2016	0.00	0.00	0.00	0.00	0.00	0.00	0.00
H.001654.6	MARTIN CREEK BRIDGE	FBR-ON/OFF	80.00	12/21/2016	-5,583.62	-1,395.92	0.00	0.00	0.00	0.00	-6,979.54
H.001779.2	JIMMIE DAVIS BRIDGE (LA 511) (HBI)	NHPP	80.00	5/17/2017	5,492.29	1,373.07	0.00	0.00	0.00	0.00	6,865.36
H.001779.2	JIMMIE DAVIS BRIDGE (LA 511) (HBI)	NHPP	80.00	3/22/2017	4,591.62	1,147.90	0.00	0.00	0.00	0.00	5,739.52
H.001779.2	JIMMIE DAVIS BRIDGE (LA 511) (HBI)	NHPP	80.00	6/13/2017	5,542.66	1,385.66	0.00	0.00	0.00	0.00	6,928.32
H.001779.2	JIMMIE DAVIS BRIDGE (LA 511) (HBI)	NHPP	80.00	12/2/2016	4,809.30	1,202.33	0.00	0.00	0.00	0.00	6,011.63
H.001795.2	RED CHUTE AND OLD CHANNEL BRIDGES	STP FLEX	80.00	12/2/2016	4,070.49	1,017.62	0.00	0.00	0.00	0.00	5,088.11
H.001795.5	RED CHUTE AND OLD CHANNEL BRIDGES	STP FLEX	80.00	3/14/2017	9,660.14	2,415.04	0.00	0.00	0.00	0.00	12,075.18
H.001795.5	RED CHUTE AND OLD CHANNEL BRIDGES	FBR-ON/OFF	80.00	12/7/2016	4,070.49	1,017.62	0.00	0.00	0.00	0.00	5,088.11
H.003244.5	DIST 04 BRIDGE BRG REHAB & MISC REPAIRS	NHPP	80.00	8/2/2016	8,661.01	2,165.25	0.00	0.00	0.00	0.00	10,826.26
H.003244.6	DIST 04 BRIDGE BRG REHAB & MISC REPAIRS	STP FLEX	80.00	8/2/2016	0.00	0.00	0.00	0.00	0.00	0.00	0.00
H.003244.6	DIST 04 BRIDGE BRG REHAB & MISC REPAIRS	NHPP	90.00	8/2/2016	0.00	0.00	0.00	0.00	0.00	0.00	0.00
H.003244.6	DIST 04 BRIDGE BRG REHAB & MISC REPAIRS	NHPP	90.00	11/30/2016	194,498.71	21,610.97	0.00	0.00	0.00	0.00	216,109.68
H.003263.5	I-20: OVERPASSES REHAB. (BOSSIER CITY)	RCAF	80.00	9/7/2016	9,213.34	2,303.34	0.00	0.00	0.00	0.00	11,516.68
H.003263.5	I-20: OVERPASSES REHAB. (BOSSIER CITY)	RCAF	80.00	11/18/2016	4,989.89	1,247.47	0.00	0.00	0.00	0.00	6,237.36
H.003263.5	I-20: OVERPASSES REHAB. (BOSSIER CITY)	FBR-ON/OFF	80.00	1/10/2017	-44,722.63	-11,180.65	0.00	0.00	0.00	0.00	-55,903.28
H.003263.5	I-20: OVERPASSES REHAB. (BOSSIER CITY)	FBR-ON/OFF	80.00	12/14/2016	46,160.90	11,540.22	0.00	0.00	0.00	0.00	57,701.12
H.003263.5	I-20: OVERPASSES REHAB. (BOSSIER CITY)	FBR-ON/OFF	80.00	1/24/2017	47,077.84	11,769.46	0.00	0.00	0.00	0.00	58,847.30
H.003263.6	I-20: OVERPASSES REHAB. (BOSSIER CITY)	NHPP	90.00	5/15/2017	3,262,395.22	362,488.36	0.00	0.00	0.00	0.00	3,624,883.58
H.003263.6	I-20: OVERPASSES REHAB. (BOSSIER CITY)	NHPP	90.00	6/29/2017	238,843.22	26,538.14	0.00	0.00	0.00	0.00	265,381.36
H.006738.6	KIDS ON THE MOVE! (PHASE III)	SRTS OPT	100.00	5/30/2017	54,506.91	0.00	0.00	0.00	0.00	0.00	54,506.91
H.006738.6	KIDS ON THE MOVE! (PHASE III)	SRTS INF	100.00	11/2/2016	173,276.21	0.00	0.00	0.00	0.00	0.00	173,276.21
H.006738.6	KIDS ON THE MOVE! (PHASE III)	SRTS NON	100.00	11/2/2016	0.00	0.00	0.00	0.00	0.00	56,239.00	56,239.00
H.006738.6	KIDS ON THE MOVE! (PHASE III)	SRTS INF	100.00	11/16/2016	180,365.32	0.00	0.00	0.00	0.00	0.00	180,365.32
H.006738.6	KIDS ON THE MOVE! (PHASE III)	SRTS INF	100.00	5/30/2017	9,584.97	0.00	0.00	0.00	0.00	0.00	9,584.97
H.007896.3	LA 3105 AT SHED ROAD TURN LANES	HSIP	90.00	5/11/2017	-183,370.05	-20,374.45	0.00	0.00	0.00	0.00	-203,744.50
H.007896.4	LA 3105 AT SHED ROAD TURN LANES	HSIP	90.00	5/11/2017	-12,526.27	-1,391.81	0.00	0.00	0.00	0.00	-13,918.08
H.007896.5	LA 3105 AT SHED ROAD TURN LANES	HSIP	90.00	5/11/2017	-10,687.18	-1,716.71	0.00	0.00	0.00	0.00	-12,403.89

Project Number	Project Description	Funding Source	Percent of Federal Share	FHWA Transaction Date	Federal Funds Amount	State Funds Amount	Converted Funds Amount	Local Funds Amount	Advance Construction Funds	Other funds	Total of all funds
H.007896.6	LA 3105 AT SHED ROAD TURN LANES	HSIP	90.00	11/28/2016	12,074.38	1,341.60	0.00	0.00	0.00	0.00	13,415.98
H.007896.6	LA 3105 AT SHED ROAD TURN LANES	HSIP	90.00	5/11/2017	-9,000.00	-1,000.00	0.00	0.00	0.00	0.00	-10,000.00
H.009508.5	LA 2: CANEY CREEK BRIDGE TO WEBSTER P/L	STP FLEX	80.00	10/25/2016	92,259.99	23,065.00	0.00	0.00	0.00	0.00	115,324.99
H.009813.6	KCS (BOSSIER CITY)	RAIL PD	100.00	12/7/2016	-131,896.00	0.00	0.00	0.00	0.00	0.00	-131,896.00
H.009888.6	KCS (BOSSIER CITY)	RAIL PD	100.00	6/29/2017	-1,276.39	0.00	0.00	0.00	0.00	-462.75	-1,739.14
H.010299.6	US 80 EB: EASTWOOD TO WEBSTER PARISH LINE	STP FLEX	80.00	6/8/2017	175,785.33	43,946.33	0.00	0.00	0.00	0.00	219,731.66
H.010299.6	US 80 EB: EASTWOOD TO WEBSTER PARISH LINE	STP FLEX	80.00	11/1/2016	2,064,256.30	516,064.07	0.00	0.00	0.00	0.00	2,580,320.37
H.010605.1	US 71 CORRIDOR STUDY	NHPP	80.00	6/15/2017	-61,883.60	-15,470.90	0.00	0.00	0.00	0.00	-77,354.50
H.010609.6	KCS (BOSSIER) BODCAU STATION RD.	RAIL PD	100.00	3/9/2017	-10,457.04	0.00	0.00	0.00	0.00	0.00	-10,457.04
H.010662.6	LA511: JIMMIE DAVIS BRIDGE REHABILITATION	NHPP	80.00	10/18/2016	-12,646,770.26	-3,161,692.57	0.00	0.00	0.00	-5,006,364.45	-20,814,827.28
H.011241.6	I-20: AIRLINE DRIVE RAMP EXTENSION	NHPP	90.00	1/30/2017	37,973.62	4,219.29	0.00	0.00	0.00	0.00	42,192.91
H.011241.6	I-20: AIRLINE DRIVE RAMP EXTENSION	NHPP	90.00	6/27/2017	4,809.47	534.39	0.00	0.00	0.00	0.00	5,343.86
H.011241.6	I-20: AIRLINE DRIVE RAMP EXTENSION	NHPP	90.00	8/25/2016	4,987.24	554.14	0.00	0.00	0.00	0.00	5,541.38
H.011241.6	I-20: AIRLINE DRIVE RAMP EXTENSION	EB	90.00	9/14/2016	8,306.11	922.90	0.00	0.00	0.00	0.00	9,229.01
H.011241.6	I-20: AIRLINE DRIVE RAMP EXTENSION	NHPP	90.00	9/20/2016	70,819.20	8,968.80	0.00	0.00	0.00	0.00	79,788.00
H.011241.6	I-20: AIRLINE DRIVE RAMP EXTENSION	NHPP	90.00	4/26/2017	15,987.11	1,776.35	0.00	0.00	0.00	0.00	17,763.46
H.011241.6	I-20: AIRLINE DRIVE RAMP EXTENSION	EB	90.00	9/20/2016	5,853.49	1,750.39	0.00	0.00	0.00	0.00	7,603.88
H.011241.6	I-20: AIRLINE DRIVE RAMP EXTENSION	EB	90.00	9/20/2016	64,965.71	7,218.41	0.00	0.00	0.00	0.00	72,184.12
H.011267.6	I-20 & I-49 PAVEMENT MARKING REPL. I	NHPP-E	100.00	4/5/2017	4,030.89	0.00	0.00	0.00	0.00	0.00	4,030.89
H.011267.6	I-20 & I-49 PAVEMENT MARKING REPL. I	NHPP-E	100.00	5/25/2017	36,401.89	0.00	0.00	0.00	0.00	0.00	36,401.89
H.011267.6	I-20 & I-49 PAVEMENT MARKING REPL. I	NHPP	100.00	12/12/2016	31,551.06	0.00	0.00	0.00	0.00	0.00	31,551.06
H.011267.6	I-20 & I-49 PAVEMENT MARKING REPL. I	NHPP-E	100.00	9/27/2016	28,722.55	0.00	0.00	0.00	0.00	0.00	28,722.55
H.011267.6	I-20 & I-49 PAVEMENT MARKING REPL. I	NHPP	100.00	11/2/2016	52,675.56	0.00	0.00	0.00	0.00	0.00	52,675.56
H.011282.1	US 80: CORRIDOR IMPROVEMENTS	STP FLEX	80.00	6/14/2017	-26,467.68	-6,616.92	0.00	0.00	0.00	0.00	-33,084.60
H.011284.1	LA 3: CORRIDOR IMPROVEMENTS	STP FLEX	80.00	6/15/2017	-29,625.59	-7,406.40	0.00	0.00	0.00	0.00	-37,031.99
H.011294.6	LA 3105: KCS RR XING (BOSSIER CITY)	RAIL HE	90.00	6/14/2017	-16,866.42	-498.10	0.00	-11,856.45	0.00	0.00	-29,220.97
H.011319.5	I-20: AIRLINE DR. TO I-220	NHS	90.00	4/5/2017	6,845.61	760.62	0.00	0.00	0.00	0.00	7,606.23
H.011484.5	US80: RED RIVER BR TEXAS ST REHAB (HB)	NHPP	80.00	12/12/2016	730,333.87	182,583.47	0.00	0.00	0.00	0.00	912,917.34
H.011538.6	MOTORIST ASSISTANCE PATROL STATEWIDE	NHPP	80.00	4/11/2017	-478,573.76	-119,643.69	0.00	0.00	0.00	0.00	-598,217.45
H.011538.6	MOTORIST ASSISTANCE PATROL STATEWIDE	NHPP	80.00	6/15/2017	1,538,475.15	384,436.99	0.00	0.00	0.00	0.00	1,922,912.14
H.011538.6	MOTORIST ASSISTANCE PATROL STATEWIDE	STP>200K	80.00	6/15/2017	2,024,701.39	506,175.35	0.00	0.00	0.00	0.00	2,530,876.74
H.011538.6	MOTORIST ASSISTANCE PATROL STATEWIDE	STP<200K	80.00	6/15/2017	333,178.75	83,294.69	0.00	0.00	0.00	0.00	416,473.44
H.011538.6	MOTORIST ASSISTANCE PATROL STATEWIDE	NHPP	80.00	6/20/2017	-430,223.62	-107,555.90	0.00	0.00	0.00	0.00	-537,779.52
H.011727.2	SWAN LAKE RD (I-220 TO FLAT RIVER) C&G	STP>200K	80.00	8/9/2016	493,038.00	5,869.50	0.00	117,390.00	0.00	0.00	616,297.50
H.011727.4	SWAN LAKE RD (I-220 TO FLAT RIVER) C&G	STP>200K	80.00	6/26/2017	291,056.64	3,464.96	0.00	69,299.20	0.00	0.00	363,820.80
H.011727.6	SWAN LAKE RD (I-220 TO FLAT RIVER) C&G	STP>200K	80.00	3/15/2017	86,836.03	2,029.01	0.00	19,680.00	0.00	0.00	108,545.04
H.011727.6	SWAN LAKE RD (I-220 TO FLAT RIVER) C&G	STP>200K	80.00	10/31/2016	612,707.53	14,316.50	0.00	138,860.38	0.00	0.00	765,884.41
H.011750.1	INTERSTATE HIGHWAY SPEED STUDIES	NHPP	90.00	12/22/2016	-2,965.34	-329.48	0.00	0.00	0.00	0.00	-3,294.82
H.011913.6	I-220 CABLE BARRIER	HSIPPEN	100.00	5/8/2017	1,820,243.74	0.00	0.00	0.00	0.00	0.00	1,820,243.74
H.012278.6	LOGGY BAYOU WMA TRAIL	RTP	80.00	11/21/2016	98,847.00	1,176.75	0.00	62,360.00	0.00	0.00	162,383.75

Project Number	Project Description	Funding Source	Percent of Federal Share	FHWA Transaction Date	Federal Funds Amount	State Funds Amount	Converted Funds Amount	Local Funds Amount	Advance Construction Funds	Other funds	Total of all funds
H.012288.6	LA 72: HAMILTON RD TO BENTON RD	STP FLEX	80.00	1/30/2017	158,014.15	39,503.54	0.00	0.00	0.00	0.00	197,517.69
H.012288.6	LA 72: HAMILTON RD TO BENTON RD	STP FLEX	80.00	11/7/2016	410,687.14	102,671.78	0.00	0.00	0.00	0.00	513,358.92
H.012360.6	I-220: PAVEMENT MARKING REPLACEMENT I	NHPP	100.00	10/12/2016	-960,760.26	0.00	0.00	0.00	0.00	0.00	-960,760.26
H.012426.1	SHREVEPORT MPO THOROUGHFARE PLAN	STP>200K	80.00	8/10/2016	262,500.00	3,125.00	0.00	62,500.00	0.00	0.00	328,125.00
H.012502.6	LA 157: EMBANKMENT FAIL NEAR BODCAU BAYOU	ER	80.00	4/24/2017	166,620.94	41,655.24	0.00	0.00	0.00	0.00	208,276.18
H.012502.6	LA 157: EMBANKMENT FAIL NEAR BODCAU BAYOU	STP FLEX	80.00	4/24/2017	-166,620.94	-41,655.24	0.00	0.00	0.00	0.00	-208,276.18
H.012502.6	LA 157: EMBANKMENT FAIL NEAR BODCAU BAYOU	STP FLEX	80.00	4/19/2017	166,620.94	0.00	166,620.94	0.00	-166,620.94	0.00	0.00
H.012502.6	LA 157: EMBANKMENT FAIL NEAR BODCAU BAYOU	STP FLEX	80.00	12/22/2016	0.00	41,655.24	0.00	0.00	166,620.94	0.00	208,276.18
H.012724.6	BOLINGER CUTOFF RD: UP-N OF PLAIN DEALING	RAIL PD	100.00	4/10/2017	0.00	0.00	0.00	0.00	273,184.83	0.00	273,184.83
H.013054.1	INTERSTATE QUEUE ANALYSIS UPDATE	NHPP	100.00	6/2/2017	1,164,048.68	0.00	0.00	0.00	0.00	0.00	1,164,048.68
H.972059.1	SHREVEPORT MPO TRANSPORTATION PL UPDATE	STP>200K	80.00	10/14/2016	95,607.62	0.00	0.00	23,901.90	0.00	0.00	119,509.52
H.972163.1	PL MPO'S 7/1/15-6/30/16	MPF 1 1/4%	80.00	3/6/2017	0.00	0.00	0.00	0.00	0.00	0.00	0.00
H.972163.1	PL MPO'S 7/1/15-6/30/16	SPR OPT	80.00	3/6/2017	-1,354,650.24	0.00	0.00	-338,662.56	0.00	0.00	-1,693,312.80
H.972216.1	PL MPO'S 7/1/16-6/30/17	SPR OPT	80.00	10/24/2016	171,754.00	0.00	0.00	42,938.50	0.00	0.00	214,692.50
H.972216.1	PL MPO'S 7/1/16-6/30/17	SPR OPT	80.00	7/13/2016	3,935,949.10	0.00	0.00	983,987.27	0.00	0.00	4,919,936.37
H.972216.1	PL MPO'S 7/1/16-6/30/17	SPR OPT	80.00	7/13/2016	677,827.90	0.00	0.00	169,456.98	0.00	0.00	847,284.88

Fiscal Year 2017 Total

\$5,897,461.78

Annual Listing of Federally Obligated Projects for Fiscal Year 2017 (Highway) – Caddo Parish

Project Number	Project Description	Funding Source	Percent of Federal Share	FHWA Transaction Date	Federal Funds Amount	State Funds Amount	Converted Funds Amount	Local Funds Amount	Advance Construction Funds	Other funds	Total of all funds
H.000101.6	U. P. RAILROAD OVERPASS NEAR GREENWOOD	NHPP-E	80.00	7/18/2016	24,761.20	6,190.30	0.00	0.00	0.00	0.00	30,951.50
H.000101.6	U. P. RAILROAD OVERPASS NEAR GREENWOOD	STP FLEX	80.00	9/20/2016	41,189.55	10,297.39	0.00	0.00	0.00	0.00	51,486.94
H.000101.6	U. P. RAILROAD OVERPASS NEAR GREENWOOD	NHPP-E	80.00	8/23/2016	80,261.44	20,065.36	0.00	0.00	0.00	0.00	100,326.80
H.000101.6	U. P. RAILROAD OVERPASS NEAR GREENWOOD	STP FLEX	80.00	1/23/2017	16,063.81	4,015.95	0.00	0.00	0.00	0.00	20,079.76
H.000102.6	CROSS BAYOU AND RELIEF BRIDGES	STP FLEX	80.00	2/13/2017	0.00	0.00	0.00	0.00	0.00	0.00	0.00
H.000102.6	CROSS BAYOU AND RELIEF BRIDGES	STP FLEX	80.00	2/13/2017	551,181.01	137,795.25	0.00	0.00	0.00	0.00	688,976.26
H.000417.6	DOE SLOUGH CANAL BRIDGE	FBR-ON/OFF	80.00	8/10/2016	0.00	0.00	0.00	0.00	0.00	0.00	0.00
H.000417.6	DOE SLOUGH CANAL BRIDGE	RCAF	80.00	8/10/2016	2,117.09	529.27	0.00	0.00	0.00	0.00	2,646.36
H.001161.6	JCT LA 173 - JCT LA 169(CONST)	STP FLEX	80.00	11/16/2016	-79.94	-19.99	0.00	0.00	0.00	0.00	-99.93
H.001166.5	CADDO LAKE BRIDGE (HBI)	STP FLEX	80.00	3/8/2017	4,647.92	1,161.98	0.00	0.00	0.00	0.00	5,809.90
H.001166.5	CADDO LAKE BRIDGE (HBI)	STP FLEX	80.00	5/3/2017	4,011.27	1,002.82	0.00	0.00	0.00	0.00	5,014.09
H.001278.6	INTERSECTION IMPR YOUREE DR AT KINGS HWY	STP FLEX	80.00	6/26/2017	183,002.62	45,750.65	0.00	0.00	0.00	0.00	228,753.27
H.001623.2	CREEK BRIDGE & IRISH BAYOU BRIDGE	RCAF	80.00	3/8/2017	4,008.10	1,002.02	0.00	0.00	0.00	0.00	5,010.12
H.001661.5	BLACK BAYOU BRIDGE	RCAF	80.00	4/19/2017	4,447.34	1,111.84	0.00	0.00	0.00	0.00	5,559.18
H.001661.5	BLACK BAYOU BRIDGE	NHPP-E	80.00	6/2/2017	7,009.71	1,752.43	0.00	0.00	0.00	0.00	8,762.14
H.001661.5	BLACK BAYOU BRIDGE	NHPP-E	80.00	12/2/2016	8,836.76	2,209.19	0.00	0.00	0.00	0.00	11,045.95
H.001661.5	BLACK BAYOU BRIDGE	EB	80.00	12/29/2016	5,852.65	1,463.16	0.00	0.00	0.00	0.00	7,315.81
H.001661.5	BLACK BAYOU BRIDGE	NHPP-E	80.00	10/20/2016	5,890.35	1,472.59	0.00	0.00	0.00	0.00	7,362.94
H.001661.5	BLACK BAYOU BRIDGE	NHPP-E	80.00	11/7/2016	6,629.96	1,657.49	0.00	0.00	0.00	0.00	8,287.45
H.001661.5	BLACK BAYOU BRIDGE	FBR-ON/OFF	80.00	2/8/2017	6,204.45	1,551.11	0.00	0.00	0.00	0.00	7,755.56
H.001661.5	BLACK BAYOU BRIDGE	NHPP-E	80.00	1/23/2017	6,718.82	1,679.71	0.00	0.00	0.00	0.00	8,398.53
H.001661.5	BLACK BAYOU BRIDGE	FBR-ON/OFF	80.00	2/22/2017	4,340.03	1,085.01	0.00	0.00	0.00	0.00	5,425.04
H.001661.5	BLACK BAYOU BRIDGE	RCAF	80.00	3/22/2017	5,361.54	1,340.39	0.00	0.00	0.00	0.00	6,701.93
H.001769.2	LA 511: LA 523 - FERN AV	HSIP	90.00	1/6/2017	0.00	0.00	0.00	0.00	0.00	0.00	0.00
H.001769.3	LA 511: LA 523 - FERN AV	HSIP	80.00	1/6/2017	0.00	0.00	0.00	0.00	0.00	0.00	0.00
H.001769.6	LA 511: LA 523 - FERN AV	HSIP	90.00	1/6/2017	21,998.57	2,444.29	0.00	0.00	0.00	0.00	24,442.86
H.001769.6	LA 511: LA 523 - FERN AV	HSIP	90.00	1/6/2017	0.00	0.00	0.00	0.00	0.00	0.00	0.00
H.001769.6	LA 511: LA 523 - FERN AV	HSIP	90.00	1/6/2017	0.00	0.00	0.00	0.00	0.00	0.00	0.00
H.001769.6	LA 511: LA 523 - FERN AV	HSIP	90.00	1/6/2017	0.00	0.00	0.00	0.00	0.00	0.00	0.00
H.001769.6	LA 511: LA 523 - FERN AV	HSIP	90.00	1/6/2017	0.00	0.00	0.00	0.00	0.00	0.00	0.00
H.001769.6	LA 511: LA 523 - FERN AV	HFL STP	80.00	1/6/2017	0.00	0.00	0.00	0.00	0.00	0.00	0.00
H.001769.6	LA 511: LA 523 - FERN AV	HSIP	90.00	6/26/2017	-6,814.16	-757.13	0.00	0.00	0.00	0.00	-7,571.29
H.002941.6	I-49 LANDSCAPING INTERCHANGES	STP ENH	95.00	9/20/2016	149,266.94	1,328.98	0.00	6,579.11	0.00	0.00	157,175.03
H.002941.6	I-49 LANDSCAPING INTERCHANGES	STP ENH	95.00	9/20/2016	702,979.86	7,233.84	0.00	79,298.52	0.00	0.00	789,512.22
H.002941.6	I-49 LANDSCAPING INTERCHANGES	STP ENH	95.00	9/20/2016	88,315.78	786.31	0.00	3,892.62	0.00	0.00	92,994.71
H.003244.5	DIST 04 BRIDGE BRG REHAB & MISC REPAIRS	NHPP	80.00	8/2/2016	8,661.01	2,165.25	0.00	0.00	0.00	0.00	10,826.26
H.003244.6	DIST 04 BRIDGE BRG REHAB & MISC REPAIRS	NHPP	90.00	11/30/2016	194,498.71	21,610.97	0.00	0.00	0.00	0.00	216,109.68
H.003244.6	DIST 04 BRIDGE BRG REHAB & MISC REPAIRS	STP FLEX	80.00	8/2/2016	0.00	0.00	0.00	0.00	0.00	0.00	0.00

Project Number	Project Description	Funding Source	Percent of Federal Share	FHWA Transaction Date	Federal Funds Amount	State Funds Amount	Converted Funds Amount	Local Funds Amount	Advance Construction Funds	Other funds	Total of all funds
H.003244.6	DIST 04 BRIDGE BRG REHAB & MISC REPAIRS	NHPP	90.00	8/2/2016	0.00	0.00	0.00	0.00	0.00	0.00	0.00
H.003261.6	I-20: DISTRICT WIDE APPROACH SLAB JACKING	NHPP	90.00	12/6/2016	-75,178.00	-8,353.11	0.00	0.00	0.00	0.00	-83,531.11
H.003363.6	I220 PHASE 1 SIGN UPGRADE- I20 TO LA 173	NHPP	100.00	12/5/2016	-245,201.99	0.00	0.00	0.00	0.00	0.00	-245,201.99
H.003495.4	I-49N, SEGMENT K-PHASE 1	NHPP	80.00	11/17/2016	2,942,045.62	0.00	0.00	0.00	0.00	735,511.40	3,677,557.02
H.003495.4	I-49N, SEGMENT K-PHASE 1	NHS	80.00	11/17/2016	0.00	0.00	2,942,045.62	0.00	-2,942,045.62	-735,511.40	-3,677,557.02
H.003495.6	I-49N, SEGMENT K-PHASE 1	NHPP	80.00	6/26/2017	569,463.24	142,365.81	0.00	0.00	0.00	0.00	711,829.05
H.003495.6	I-49N, SEGMENT K-PHASE 1	NHPP	80.00	5/31/2017	0.00	49,148.84	0.00	0.00	0.00	0.00	49,148.84
H.003495.6	I-49N, SEGMENT K-PHASE 1	DEMOID 330	80.00	5/31/2017	60.46	15.12	0.00	0.00	0.00	0.00	75.58
H.003495.6	I-49N, SEGMENT K-PHASE 1	NHPP	80.00	5/22/2017	930,517.10	232,629.27	0.00	0.00	0.00	0.00	1,163,146.37
H.003495.6	I-49N, SEGMENT K-PHASE 1	NHPP	80.00	4/12/2017	711,441.77	177,860.44	0.00	0.00	0.00	0.00	889,302.21
H.003495.6	I-49N, SEGMENT K-PHASE 1	NHPP	80.00	7/28/2016	73,072.95	18,268.24	0.00	0.00	0.00	0.00	91,341.19
H.003495.6	I-49N, SEGMENT K-PHASE 1	NHPP	80.00	6/29/2017	400,000.00	100,000.00	0.00	0.00	0.00	0.00	500,000.00
H.003495.6	I-49N, SEGMENT K-PHASE 1	NHPP	80.00	6/29/2017	0.00	-128,383.27	513,533.06	0.00	-513,533.06	0.00	-641,916.33
H.003495.6	I-49N, SEGMENT K-PHASE 1	DEMOID1302	80.00	6/29/2017	113,533.06	28,383.27	0.00	0.00	0.00	0.00	141,916.33
H.003495.6	I-49N, SEGMENT K-PHASE 1	NHPP	80.00	6/26/2017	0.00	-142,365.81	569,463.24	0.00	-569,463.24	0.00	-711,829.05
H.003495.6	I-49N, SEGMENT K-PHASE 1	NHPP	80.00	10/26/2016	0.00	-195,377.02	781,508.08	0.00	-781,508.08	0.00	-976,885.10
H.003495.6	I-49N, SEGMENT K-PHASE 1	NHPP	80.00	9/20/2016	197,330.90	49,332.72	0.00	0.00	0.00	0.00	246,663.62
H.003495.6	I-49N, SEGMENT K-PHASE 1	NHPP	80.00	10/26/2016	781,508.09	195,377.02	0.00	0.00	0.00	0.00	976,885.11
H.003495.6	I-49N, SEGMENT K-PHASE 1	NHPP	80.00	11/8/2016	855,658.46	213,914.61	0.00	0.00	0.00	0.00	1,069,573.07
H.003496.6	I-49 NORTH (MLK JR DR-LA 1) SEG J	NHPP	80.00	10/14/2016	359,868.84	89,967.21	0.00	0.00	0.00	0.00	449,836.05
H.003496.6	I-49 NORTH (MLK JR DR-LA 1) SEG J	NHS	80.00	10/14/2016	0.00	-89,967.21	359,868.84	0.00	-359,868.84	0.00	-449,836.05
H.003496.6	I-49 NORTH (MLK JR DR-LA 1) SEG J	NHPP	80.00	11/2/2016	153,708.72	38,427.18	0.00	0.00	0.00	0.00	192,135.90
H.003496.6	I-49 NORTH (MLK JR DR-LA 1) SEG J	NHS	80.00	11/2/2016	0.00	-38,427.18	153,708.72	0.00	-153,708.72	0.00	-192,135.90
H.003498.6	I-49 NORTH (LA 173 - LA 169) SEG H	NHPP-E	80.00	10/19/2016	1,340,259.41	335,064.85	0.00	0.00	0.00	0.00	1,675,324.26
H.003502.6	I-49 NORTH (LA 2 TO PARISH RD) SEG C	NHS	80.00	7/19/2016	0.03	0.01	0.00	0.00	0.00	0.00	0.04
H.003502.6	I-49 NORTH (LA 2 TO PARISH RD) SEG C	RCAF	80.00	7/19/2016	17,017.53	4,254.38	0.00	0.00	0.00	0.00	21,271.91
H.003504.2	I-49 NORTH (LA 173-LA 169)	STP FLEX	80.00	6/6/2017	-737.46	-184.37	0.00	0.00	0.00	0.00	-921.83
H.003504.3	I-49 NORTH (LA 173-LA 169)	NHS	80.00	6/6/2017	-156.13	-39.03	0.00	0.00	0.00	0.00	-195.16
H.003511.3	I-49 NORTH (MARTIN LUTHER KING, JR DRIVE	DEMOID1302	90.00	10/20/2016	0.00	0.00	0.00	0.00	0.00	333,119.02	333,119.02
H.003511.3	I-49 NORTH (MARTIN LUTHER KING, JR DRIVE	NHPP-E	80.00	10/13/2016	1,442.40	360.60	0.00	0.00	0.00	0.00	1,803.00
H.003511.3	I-49 NORTH (MARTIN LUTHER KING, JR DRIVE	RCAF	80.00	9/12/2016	3,077.12	769.28	0.00	0.00	0.00	0.00	3,846.40
H.003511.3	I-49 NORTH (MARTIN LUTHER KING, JR DRIVE	DEMOID1302	90.00	12/20/2016	0.00	0.00	0.00	0.00	0.00	151.00	151.00
H.003516.6	I-49N (SEG A - D) SIGNAGE & MISC CONST	DEMOID1302	80.00	6/27/2017	-113,533.06	-28,391.41	0.00	0.00	0.00	-113,066.33	-254,990.80
H.003886.5	I-49 NORTH (I-220 TO MARTIN LUTHER KING,	NHPP	80.00	2/6/2017	245,640.74	61,410.19	0.00	0.00	0.00	0.00	307,050.93
H.003905.5	I-49 NORTH (I-220 TO MARTIN LUTHER KING,	NHS	80.00	3/10/2017	-16,250.41	-4,062.60	0.00	0.00	0.00	0.00	-20,313.01
H.003916.5	I-49 NORTH (LA 1 TO LA 173) ** THIS IS	DEMOID 330	80.00	12/6/2016	-60.46	-15.12	0.00	0.00	0.00	0.00	-75.58
H.006053.6	MURPHY STREET BRIDGE OVER KCS RAILROAD	FBR-OFF	80.00	11/2/2016	24,324.38	6,081.09	0.00	0.00	0.00	0.00	30,405.47
H.006053.6	MURPHY STREET BRIDGE OVER KCS RAILROAD	FBR-OFF	100.00	2/21/2017	39,012.50	0.00	0.00	0.00	0.00	0.00	39,012.50
H.006053.6	MURPHY STREET BRIDGE OVER KCS RAILROAD	FBR-OFF	100.00	3/6/2017	159,753.68	0.00	0.00	0.00	0.00	0.00	159,753.68
H.006053.6	MURPHY STREET BRIDGE OVER KCS RAILROAD	FBR-OFF	80.00	10/14/2016	135,802.94	33,950.74	0.00	0.00	0.00	0.00	169,753.68

Project Number	Project Description	Funding Source	Percent of Federal Share	FHWA Transaction Date	Federal Funds Amount	State Funds Amount	Converted Funds Amount	Local Funds Amount	Advance Construction Funds	Other funds	Total of all funds
H.006053.6	MURPHY STREET BRIDGE OVER KCS RAILROAD	FBR-OFF	80.00	10/14/2016	0.00	0.00	0.00	0.00	0.00	0.00	0.00
H.006053.6	MURPHY STREET BRIDGE OVER KCS RAILROAD	FBR-OFF	80.00	10/14/2016	0.00	0.00	0.00	0.00	0.00	0.00	0.00
H.006053.6	MURPHY STREET BRIDGE OVER KCS RAILROAD	FBR-OFF	80.00	10/14/2016	0.00	0.00	0.00	0.00	0.00	0.00	0.00
H.006053.6	MURPHY STREET BRIDGE OVER KCS RAILROAD	FBR-OFF	80.00	10/14/2016	0.00	0.00	0.00	0.00	0.00	0.00	0.00
H.009213.2	LA 3132 (INNER LOOP) EXTENSION	STP>200K	80.00	7/25/2016	153,340.80	38,335.20	0.00	0.00	0.00	0.00	191,676.00
H.009399.6	KCS (VIVIAN)	RAIL HE	100.00	12/20/2016	-211,691.51	0.00	0.00	0.00	0.00	0.00	-211,691.51
H.009475.6	LA 538: ROUNDABOUT AT RAVENDALE	HSIP	100.00	6/13/2017	22,617.84	0.00	0.00	0.00	0.00	0.00	22,617.84
H.009575.5	I-20: TX S/L- 0.44 MI E OF MONKHOUSE DR.	NHPP-E	90.00	3/8/2017	6,208.99	689.89	0.00	0.00	0.00	0.00	6,898.88
H.009575.5	I-20: TX S/L- 0.44 MI E OF MONKHOUSE DR.	NHPP-E	90.00	11/8/2016	7,915.75	879.53	0.00	0.00	0.00	0.00	8,795.28
H.009575.5	I-20: TX S/L- 0.44 MI E OF MONKHOUSE DR.	NHPP-E	90.00	12/29/2016	5,650.78	627.86	0.00	0.00	0.00	0.00	6,278.64
H.009575.5	I-20: TX S/L- 0.44 MI E OF MONKHOUSE DR.	NHPP-E	90.00	4/20/2017	7,065.64	785.07	0.00	0.00	0.00	0.00	7,850.71
H.009575.5	I-20: TX S/L- 0.44 MI E OF MONKHOUSE DR.	NHPP	90.00	4/20/2017	0.00	0.00	0.00	0.00	0.00	0.00	0.00
H.009575.5	I-20: TX S/L- 0.44 MI E OF MONKHOUSE DR.	NHPP-E	90.00	4/20/2017	0.00	0.00	0.00	0.00	0.00	0.00	0.00
H.009575.5	I-20: TX S/L- 0.44 MI E OF MONKHOUSE DR.	NHPP-E	90.00	6/2/2017	5,032.73	559.19	0.00	0.00	0.00	0.00	5,591.92
H.009576.6	I-49: DESOTO PARISH LINE TO LA 526	NHPP	90.00	7/12/2016	-1,062,816.83	-118,090.76	0.00	0.00	0.00	0.00	-1,180,907.59
H.009825.6	KCS (MOORINGSPORT) BARNETTE RD.	STP FLEX	100.00	7/11/2016	213,049.58	0.00	0.00	0.00	0.00	0.00	213,049.58
H.009825.6	KCS (MOORINGSPORT) BARNETTE RD.	STP FLEX	100.00	3/28/2017	-111,699.04	0.00	0.00	0.00	0.00	0.00	-111,699.04
H.009853.6	UP (SHREVEPORT) LEONARD ROAD	RAIL PD	100.00	6/15/2017	-76,129.12	0.00	0.00	0.00	0.00	0.00	-76,129.12
H.010060.5	BLANCHARD FURRH ROAD / CHOCTAW BAYOU	FBR-OFF	80.00	3/23/2017	9,967.95	2,491.99	0.00	0.00	0.00	0.00	12,459.94
H.010060.5	BLANCHARD FURRH ROAD / CHOCTAW BAYOU	RCAF	80.00	12/14/2016	8,227.13	2,056.78	0.00	0.00	0.00	0.00	10,283.91
H.010247.6	ROADWAY FLOODING IMPROVEMENTS - US 71	NHPP	80.00	10/20/2016	-109,991.97	-27,497.99	0.00	0.00	0.00	0.00	-137,489.96
H.010278.6	LA 173: JCT HEARNE AVE TO JCT I-220	STP FLEX	80.00	3/8/2017	1,477,538.55	369,384.64	0.00	0.00	0.00	0.00	1,846,923.19
H.010300.6	US 80: JCT JEFFERSON PAIGE RD- HEARNE RD	STP FLEX	100.00	7/14/2016	364,878.36	0.00	0.00	0.00	0.00	0.00	364,878.36
H.010428.6	US 71: I-20 TO HEARNE AVE	NHPP	80.00	10/24/2016	2,604,625.81	651,156.45	0.00	0.00	0.00	0.00	3,255,782.26
H.010428.6	US 71: I-20 TO HEARNE AVE	NHPP	80.00	1/30/2017	480,936.95	120,234.24	0.00	0.00	0.00	0.00	601,171.19
H.010686.6	LA 169: KCS RR XING (CADD0)	RAIL PD	100.00	12/20/2016	-9,510.22	0.00	0.00	0.00	0.00	0.00	-9,510.22
H.010969.6	LA 3132: GUARD RAIL UPGRADE	HSIP	100.00	12/14/2016	11,333.75	0.00	0.00	0.00	0.00	0.00	11,333.75
H.011105.3	CUL-DE-SACS @ I-49N C-OF-A LINE	RCAF	80.00	4/24/2017	599.61	149.90	0.00	0.00	0.00	0.00	749.51
H.011105.3	CUL-DE-SACS @ I-49N C-OF-A LINE	RCAF	80.00	4/5/2017	-15,304.77	-3,826.19	0.00	0.00	0.00	0.00	-19,130.96
H.011105.3	CUL-DE-SACS @ I-49N C-OF-A LINE	RCAF	80.00	5/22/2017	-440.30	-110.08	0.00	0.00	0.00	0.00	-550.38
H.011111.6	I-49 NORTH, SEGMENT K - PHASE 2	NHPP	80.00	3/21/2017	534,873.28	133,718.32	0.00	0.00	0.00	0.00	668,591.60
H.011111.6	I-49 NORTH, SEGMENT K - PHASE 2	NHPP	80.00	8/25/2016	143,123.25	35,780.81	0.00	0.00	0.00	0.00	178,904.06
H.011111.6	I-49 NORTH, SEGMENT K - PHASE 2	NHPP	80.00	7/6/2016	123,501.17	30,875.29	0.00	0.00	0.00	0.00	154,376.46
H.011111.6	I-49 NORTH, SEGMENT K - PHASE 2	NHPP	80.00	6/27/2017	1,311,902.38	327,975.60	0.00	0.00	0.00	0.00	1,639,877.98
H.011111.6	I-49 NORTH, SEGMENT K - PHASE 2	NHPP	80.00	5/3/2017	127,722.89	31,930.72	0.00	0.00	0.00	0.00	159,653.61
H.011267.6	I-20 & I-49 PAVEMENT MARKING REPL. I	NHPP-E	100.00	4/5/2017	4,030.89	0.00	0.00	0.00	0.00	0.00	4,030.89
H.011267.6	I-20 & I-49 PAVEMENT MARKING REPL. I	NHPP	100.00	12/12/2016	31,551.06	0.00	0.00	0.00	0.00	0.00	31,551.06
H.011267.6	I-20 & I-49 PAVEMENT MARKING REPL. I	NHPP	100.00	11/2/2016	52,675.56	0.00	0.00	0.00	0.00	0.00	52,675.56
H.011267.6	I-20 & I-49 PAVEMENT MARKING REPL. I	NHPP-E	100.00	9/27/2016	28,722.55	0.00	0.00	0.00	0.00	0.00	28,722.55
H.011267.6	I-20 & I-49 PAVEMENT MARKING REPL. I	NHPP-E	100.00	5/25/2017	36,401.89	0.00	0.00	0.00	0.00	0.00	36,401.89

Project Number	Project Description	Funding Source	Percent of Federal Share	FHWA Transaction Date	Federal Funds Amount	State Funds Amount	Converted Funds Amount	Local Funds Amount	Advance Construction Funds	Other funds	Total of all funds
H.011281.1	US 171: CORRIDOR IMPROVEMENTS	NHPP	80.00	6/15/2017	-39,137.96	-9,784.49	0.00	0.00	0.00	0.00	-48,922.45
H.011283.1	LA 1: CORRIDOR IMPROVEMENTS	STP FLEX	80.00	6/8/2017	-5,861.13	-1,465.28	0.00	0.00	0.00	0.00	-7,326.41
H.011392.1	US 80 AT LA 169 INTERSECTION IMPROVEMENT	STP FLEX	80.00	6/7/2017	-2,446.14	-611.54	0.00	0.00	0.00	0.00	-3,057.68
H.011750.1	INTERSTATE HIGHWAY SPEED STUDIES	NHPP	90.00	12/22/2016	-2,965.34	-329.48	0.00	0.00	0.00	0.00	-3,294.82
H.011910.6	LA 3132 CABLE BARRIER: I-20 TO LA 523	HSIP	100.00	10/24/2016	134,009.84	0.00	0.00	0.00	0.00	0.00	134,009.84
H.011910.6	LA 3132 CABLE BARRIER: I-20 TO LA 523	HSIP	100.00	8/22/2016	2,036,408.07	0.00	0.00	0.00	0.00	0.00	2,036,408.07
H.011913.6	I-220 CABLE BARRIER	HSIPPEN	100.00	5/8/2017	1,820,243.74	0.00	0.00	0.00	0.00	0.00	1,820,243.74
H.011914.6	I-49 CB: NATCHITOCHES P/L TO LA 3132	HSIPPEN	100.00	5/11/2017	1,152,203.83	0.00	0.00	0.00	0.00	0.00	1,152,203.83
H.011914.6	I-49 CB: NATCHITOCHES P/L TO LA 3132	HSIPPEN	100.00	2/8/2017	4,989,370.68	0.00	0.00	0.00	0.00	0.00	4,989,370.68
H.012193.6	I-20: EB ENTRANCE RAMP AT LA 169	NHPP	90.00	9/14/2016	1,622,215.39	180,246.15	0.00	0.00	0.00	0.00	1,802,461.54
H.012193.6	I-20: EB ENTRANCE RAMP AT LA 169	SPR OPT	80.00	9/14/2016	300,000.00	75,000.00	0.00	0.00	0.00	0.00	375,000.00
H.012193.6	I-20: EB ENTRANCE RAMP AT LA 169	NHPP	90.00	3/21/2017	1,191,576.20	132,397.36	0.00	0.00	0.00	0.00	1,323,973.56
H.012309.3	LA 523: SIGHT DISTANCE AT STEWART DR	HSIP	90.00	1/23/2017	37,360.44	4,151.16	0.00	0.00	0.00	0.00	41,511.60
H.012316.5	I-20: PEDESTRIAN OVERPASS REHABILITATION	NHPP	90.00	2/13/2017	7,876.85	875.21	0.00	0.00	0.00	0.00	8,752.06
H.012316.5	I-20: PEDESTRIAN OVERPASS REHABILITATION	NHPP	90.00	2/22/2017	5,455.45	606.16	0.00	0.00	0.00	0.00	6,061.61
H.012316.5	I-20: PEDESTRIAN OVERPASS REHABILITATION	NHPP	90.00	12/29/2016	4,760.00	528.89	0.00	0.00	0.00	0.00	5,288.89
H.012316.5	I-20: PEDESTRIAN OVERPASS REHABILITATION	NHPP	90.00	10/20/2016	19,535.51	2,170.61	0.00	0.00	0.00	0.00	21,706.12
H.012316.5	I-20: PEDESTRIAN OVERPASS REHABILITATION	NHPP	90.00	5/3/2017	4,573.14	1,143.28	0.00	0.00	0.00	0.00	5,716.42
H.012356.6	ELLERBE & YEARWOOD: UP RR XINGS (CADD0)	RAIL PD	100.00	4/10/2017	0.00	0.00	0.00	0.00	612,900.57	0.00	612,900.57
H.012360.6	I-220: PAVEMENT MARKING REPLACEMENT I	NHPP	100.00	10/12/2016	-960,760.26	0.00	0.00	0.00	0.00	0.00	-960,760.26
H.012426.1	SHREVEPORT MPO THOROUGHFARE PLAN	STP>200K	80.00	8/10/2016	262,500.00	3,125.00	0.00	62,500.00	0.00	0.00	328,125.00
H.012444.6	LA 3132 EB TO I-49 NB RAMP REPAIRS	NHPP	90.00	9/13/2016	221,252.96	28,715.03	0.00	0.00	0.00	0.00	249,967.99
H.012444.6	LA 3132 EB TO I-49 NB RAMP REPAIRS	NHPP	90.00	11/30/2016	54,534.62	6,059.40	0.00	0.00	0.00	0.00	60,594.02
H.012451.5	DISTRICT 04-MISCELLANEOUS BRIDGE REPAIRS	NHPP	90.00	12/14/2016	189,995.48	21,110.61	0.00	0.00	0.00	0.00	211,106.09
H.013054.1	INTERSTATE QUEUE ANALYSIS UPDATE	NHPP	100.00	6/2/2017	1,164,048.68	0.00	0.00	0.00	0.00	0.00	1,164,048.68
H.970969.1	KCS(VIVIAN)	AP	100.00	6/6/2017	-227.00	0.00	0.00	0.00	0.00	0.00	-227.00
H.970975.1	KCS(VIVIAN)	RAIL PD	100.00	6/29/2017	-79,437.55	0.00	0.00	0.00	0.00	0.00	-79,437.55
H.971640.1	KCS (OIL CITY)	RAIL HE	100.00	12/12/2016	-725.00	0.00	0.00	0.00	0.00	0.00	-725.00
H.972059.1	SHREVEPORT MPO TRANSPORTATION PL UPDATE	STP>200K	80.00	10/14/2016	95,607.62	0.00	0.00	23,901.90	0.00	0.00	119,509.52
<i>Fiscal Year 2017 Total</i>											<i>\$32,132,664.32</i>

Annual Listing of Federally Obligated Projects for Fiscal Year 2017 (Transit)

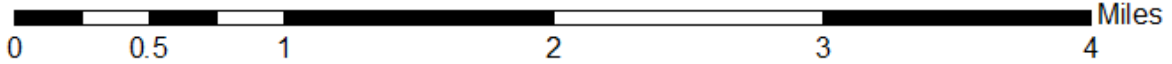
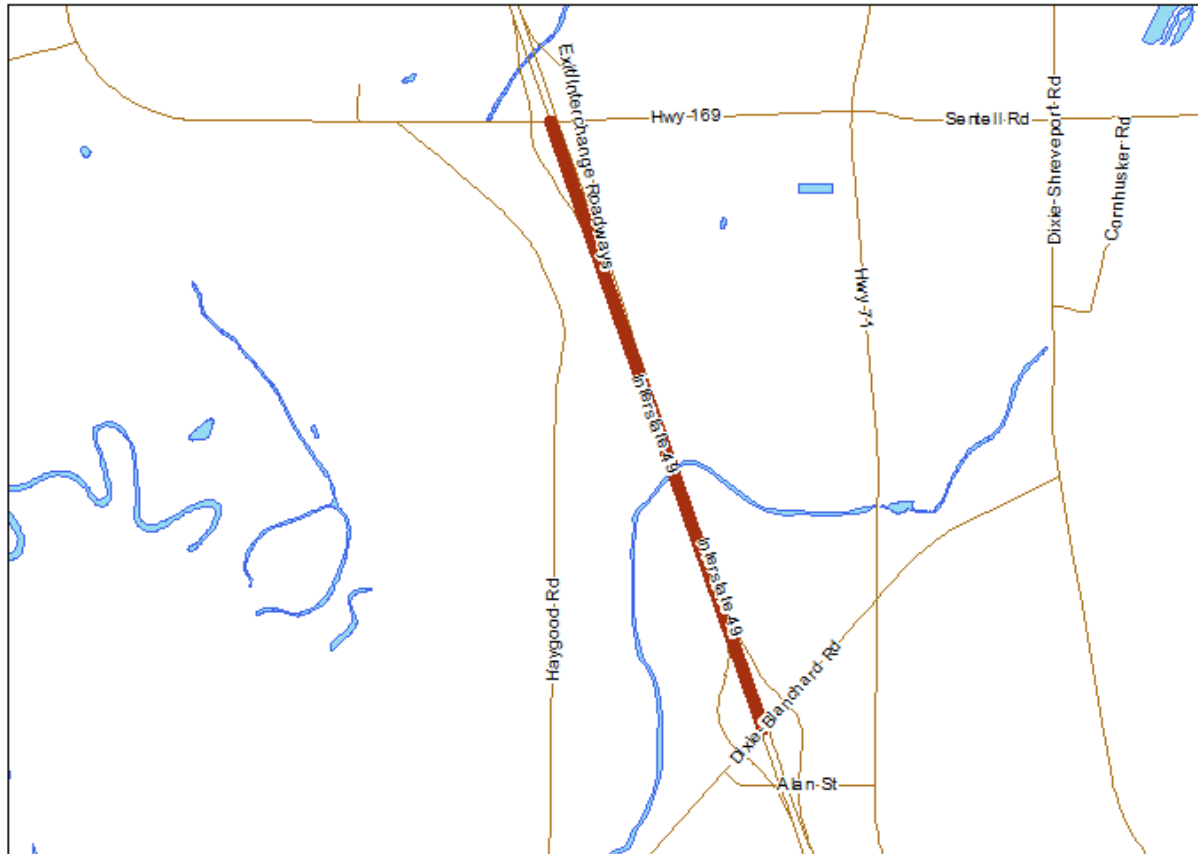
Project Number	Project Name	Description	Funding Source	Total Cost	Federal Share	Local Share
<i>FTA Section 5307 Projects</i>						
5307-2015-01	PREVENTIVE MAINTENANCE	OPERATIONS	FTA SECTION 9	\$3,445,345	\$2,756,276	\$689,069
5307-2015-02	NON-FIXED ROUTE ADA PARATRANSIT SERVICE	OPERATIONS	FTA SECTION 9	\$340,287	\$272,229	\$68,057
5307-2015-03	PROJECT ADMINISTRATION	ADMINISTRATION	FTA SECTION 9	\$55,615	\$44,495	\$11,123
5307-2015-04	NLCOG PLANNING	ADMINISTRATION	FTA SECTION 9	\$37,500	\$30,000	\$7,500
5307-2015-05	TRAINING/TRAVEL	ADMINISTRATION	FTA SECTION 9	\$10,000	\$8,000	\$2,000
5307-2015-06	BUS – CNG TECHNOLOGY 40 FT	STP>200K TRANSFER	FTA SECTION 9	\$1,000,000	\$200,000	\$800,00
<i>Fiscal Year 2017 Total</i>						<i>\$3,888,747.00</i>

Project Tracking Sheets

To aid in understanding the detailed project listings worksheets, significant TIP programmed and obligated projects are individually referenced through project tracking sheets. Minor overlay and geometric improvements do not have tracking sheets developed for them.

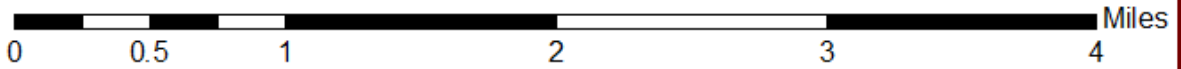
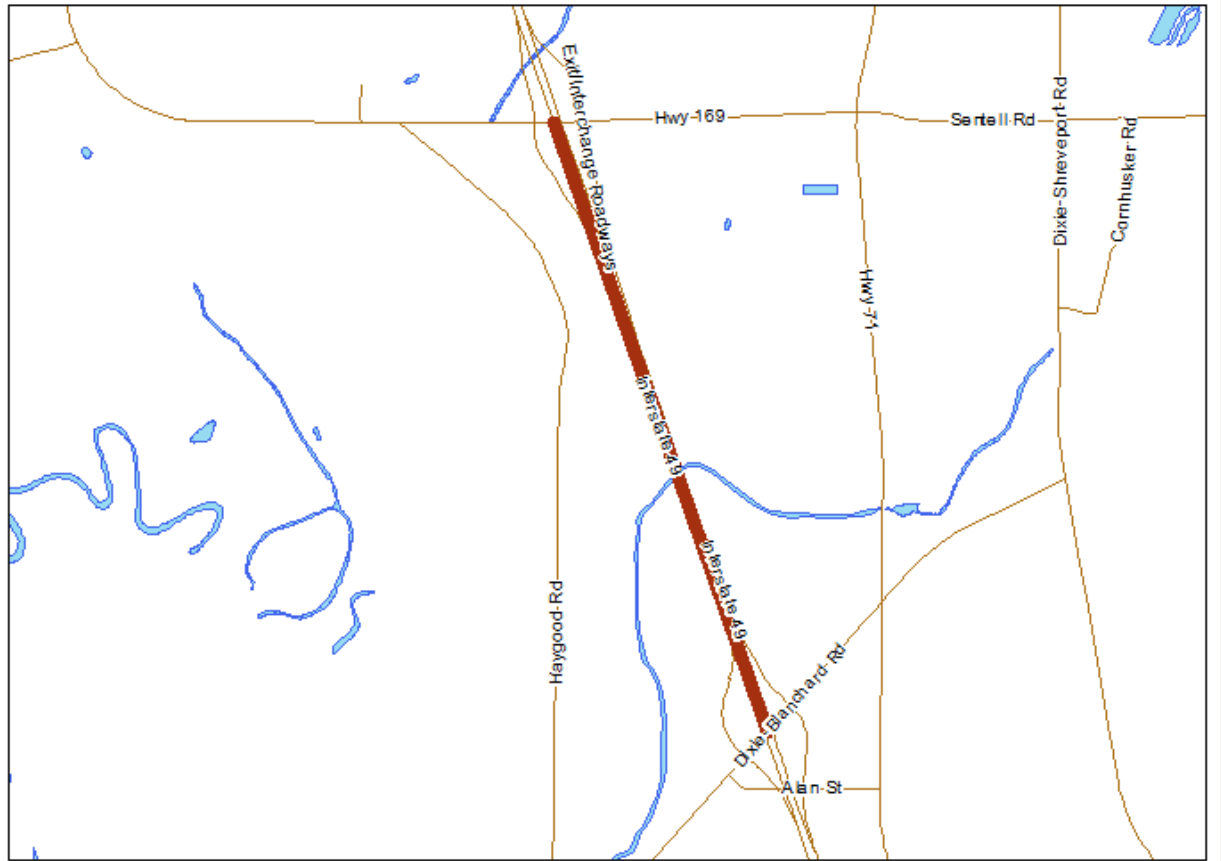
I-49 NORTH Segment C

LA 2 TO PARISH RD



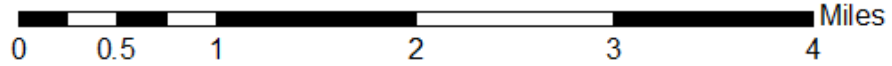
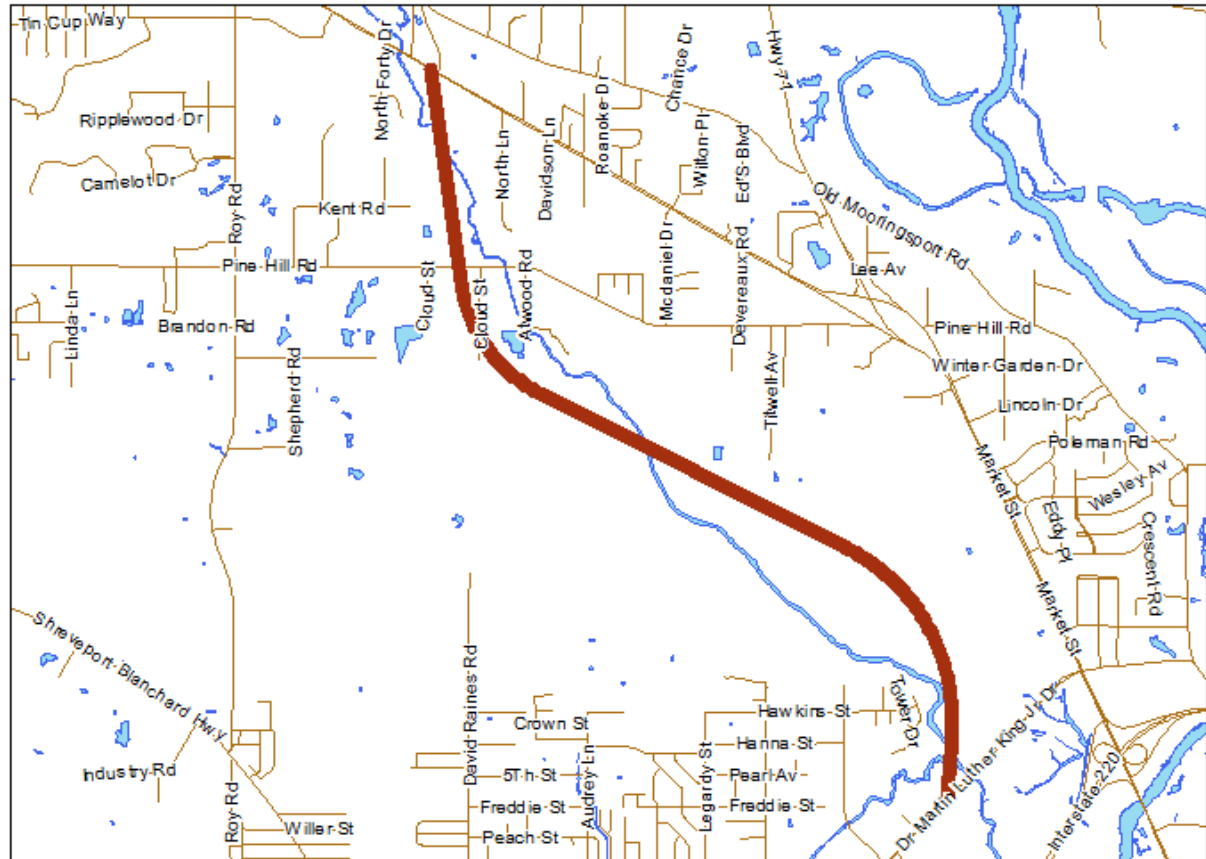
I-49 NORTH Segment H

LA 173 - LA 169



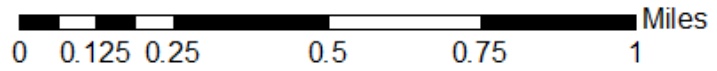
I-49 NORTH Segment J

MLK JR DR-LA 1



I-49 NORTH Segment K

I-220 TO MLK JR DR



The Northwest Louisiana Council of Governments is an intergovernmental association of local governments established to assist in planning for common needs, cooperating for the mutual benefit, and coordinating for sound regional development. NLCOG's purpose is to strengthen both the individual and collective power of local governments and to help them recognize regional opportunities, eliminate unnecessary duplication, and make joint decisions for the benefit of the entire Northwest Louisiana community. This is achieved by developing and implementing constructive and workable policies and programs for solving area-wide problems. These issues include, but are not limited to, matters affecting transportation, economic, health, safety, welfare, education, and regional development issues.

NLCOG is funded by a variety of funding sources including federal grants from the U. S. Department of Transportation's Federal Highway Administration, and Federal Transit Administration, the Louisiana Department of Transportation and Development, as well as by NLCOG's local member governments.



625 Texas Street, Suite 200
Shreveport, LA 71101
318.841.5950
www.nlcog.org