

Annual Listing of Federally Obligated Projects

Fiscal Year 2018

Disclaimer

The preparation of this document was financed through grants from and disseminated under the sponsorship of the Federal Highway Administration, the Louisiana Department of Transportation and Development, and the Northwest Louisiana Council of Governments. The United States Government and the State of Louisiana assume no liability for its contents or use thereof.

Non-Discrimination Statement

The Northwest Louisiana Council of Governments (NLCOG) complies with the Americans with Disabilities Act of 1990, Section 504 of the Rehabilitation Act of 1973, Title VI of the Civil Rights Act of 1964, and other federal equal opportunity laws and, therefore, does not discriminate on the basis of race, sex, color, age, national origin, religion or disability; in admission to, access to, treatment in or operations of its programs, services, or activities. NLCOG does not discriminate in its hiring or employment practices.

Questions, concerns, complaints, or requests for additional information regarding the non-discrimination policies may be directed to the designated Title VI, ADA and Section 504 Compliance Coordinator:

Lisa M. Frazier
Public Involvement Coordinator
(318) 841-5950 (voice)
lisa.frazier@nlcog.org
625 Texas Street, Suite 200
Shreveport, LA 71101

Annual Listing of Federally Obligated Projects

Fiscal Year 2018

Purpose of this Report

The Annual Listing of Obligated Projects is a requirement of metropolitan planning areas, per § 450.332:

- (a) In metropolitan planning areas, on an annual basis, no later than 90 calendar days following the end of the program year, the State, public transportation operator(s), and the MPO shall cooperatively develop a listing of projects (including investments in pedestrian walkways and bicycle transportation facilities) for which funds under 23 U.S.C. or 49 U.S.C. Chapter 53 were obligated in the preceding program year.
- (b) The listing shall be prepared in accordance with § 450.314(a) and shall include all federally funded projects authorized or revised to increase obligations in the preceding program year, and shall at a minimum include the TIP information under § 450.324(e)(1) and (4) and identify, for each project, the amount of Federal funds requested in the TIP, the Federal funding that was obligated during the preceding year, and the Federal funding remaining and available for subsequent years.
- (c) The listing shall be published or otherwise made available in accordance with the MPO's public participation criteria for the TIP.

The Northwest Louisiana Council of Governments (NLCOG) responds to the directive through this report. It lists all transportation projects in Northwest Louisiana that were obligated during NLCOG's fiscal year 2017 (July 1, 2015 – June 30, 2017). The Federal Highway Administration (FHWA) defines obligation as the federal government's legal commitment (promise) to pay or reimburse the states or other entities for the federal share of a project's eligible costs¹. Thus, an obligated project is one that has been approved by the federal government for reimbursement, though not necessarily reimbursed yet. Obligated projects were not necessarily initiated or completed in this year. The obligated project cost reflected in this report also may not equal final project cost.

Background

NLCOG is the Metropolitan Planning Organization (MPO) for the Shreveport – Bossier urbanized area. Every metropolitan area with a population of more than 50,000 persons has a designated MPO to qualify for federal highway and transit

¹ Financing Federal Aid Highways Glossary. <http://www.fhwa.dot.gov/reports/fifahiw/ffahappa.htm>. May 10, 2011.

funding. NLCOG, acting in its capacity as the MPO, has responsibility for planning, programming, and coordinating federal-aid transportation investments within the Shreveport – Bossier urbanized area.

The United States Department of Transportation relies on the MPO to ensure that highway and transit projects that use federal funds are products of a credible planning process and meet local priorities. Transportation legislation – including the Intermodal Surface Transportation Efficiency Act of 1991 (ISTEA), the Transportation Equity Act for the 21st Century (TEA-21), and the Safe, Accountable, Flexible, Efficient Transportation Equity Act: A legacy for Users (SAFETEA-LU) and the most recent transportation authorization Moving Ahead for Progress in the 21st Century (MAP-21) – strengthened the role MPOs play in rationally developed transportation programs. As the MPO, NLCOG is statutorily mandated to assess the transportation needs and deficiencies of the region with direction from public officials; citizens; modal representatives; and federal, state and local planning departments.

The MPO Transportation Policy Committee (“committee”) membership consists of the administrators from Bossier and Caddo Parishes; the mayors of the cities of Bossier City and Shreveport; the executive director of the Port of Caddo – Bossier, the executive directors of the Metropolitan Planning Commissions of Bossier and Shreveport; the general manager of the local public transit agency and the District IV administrator of LaDOTD. The committee wields final decision-making. Non-voting members include FHWA and FTA. NLCOG represents the perspectives of its local government members, while coordinating its planning efforts with the Louisiana Department of Transportation (LaDOTD), the Federal Transit Administration (FTA) and the Federal Highway Administration (FHWA).

NLCOG is assisted in its planning and programming efforts by a Technical Coordinating Committee (TCC) that is comprised of public works directors, planning directors, and transit operators. The TCC meets as-needed to review proposed amendments to the Transportation Improvement Program (TIP). Working groups and ad hoc groups are also created and appointed, as needed.

Regional Transportation Plan

NLCOG develops a minimum 20-year regional long-range transportation plan (LRTP) describing the transportation needs and goals for the region. It is the chief legal document reflecting the resources, the fundamental planning process, and the selection of projects for the region. The LRTP includes the needed transportation system and the fiscally-constrained LRTP. The fiscally-constrained LRTP, required by federal law, identifies the multimodal transportation system that can be achieved over a minimum 20-year planning horizon with the “reasonably available” financial resources over that time. Federal law requires NLCOG to update the plan every five years. NLCOG adopted Mobility 2014, a comprehensive multi-modal transportation plan for Bossier and Caddo Parishes on April 15, 2016.

The LRTP incorporates policy considerations and related long-term impacts. Analysis of land use changes, population growth and density patterns, economic development and commercial and residential zoning help identify and rank projects. All regionally significant projects are identified in the plan regardless of their funding source; and, in many cases, projects are funded with combinations of state, federal, and local funds.

Transportation Improvement Program

A Transportation Improvement Program (TIP) is a prioritized, financially-constrained multi-year program for implementation of federally-funded transportation improvement projects in a designated MPO region. The TIP serves as a planning tool to ensure the most effective use of limited funding for transportation improvements. The TIP includes the adopted list of public transit, roadway, bicycle, pedestrian, and air quality projects that will receive federal transportation funds in the near future. A transportation improvement is not eligible for federal funding unless it is documented within the TIP. The TIP also includes the projects in Northwest Louisiana that are intended to only use state funds. The TIP implements the fiscally-constrained LRTP. NLCOG's TIP covers a three-year period, though specific projects and their funding levels are usually identified for the first three or four-year period.

The 2015-2018 TIP was adopted on November 21, 2014 and has been amended regularly since adoption. The projects in this report are from the 2015-2018 TIP. The 2015-2018 TIP defines the projects eligible for federal funding in FY2018, which covers the period from July 1, 2017 to June 30, 2018.

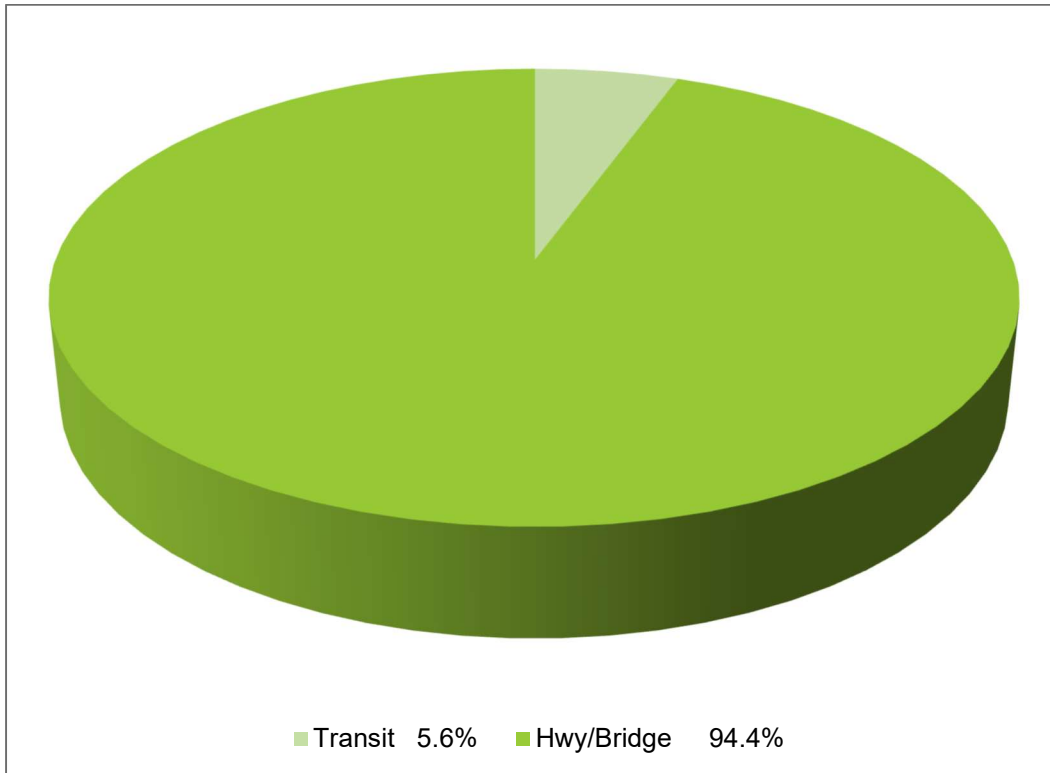
Public Involvement

NLCOG aims to proactively engage the public in the regional transportation planning process and embraces federal requirements that MPOs provide the public with complete information, timely public notice, full public access to key decisions, and early and continuing involvement in developing the LRTP, TIP, and other products. NLCOG's public involvement strategies include presenting information and educating the public, continually soliciting public input, helping information flow between the public and decision makers, and considering and responding to public concerns.

Summary of Projects

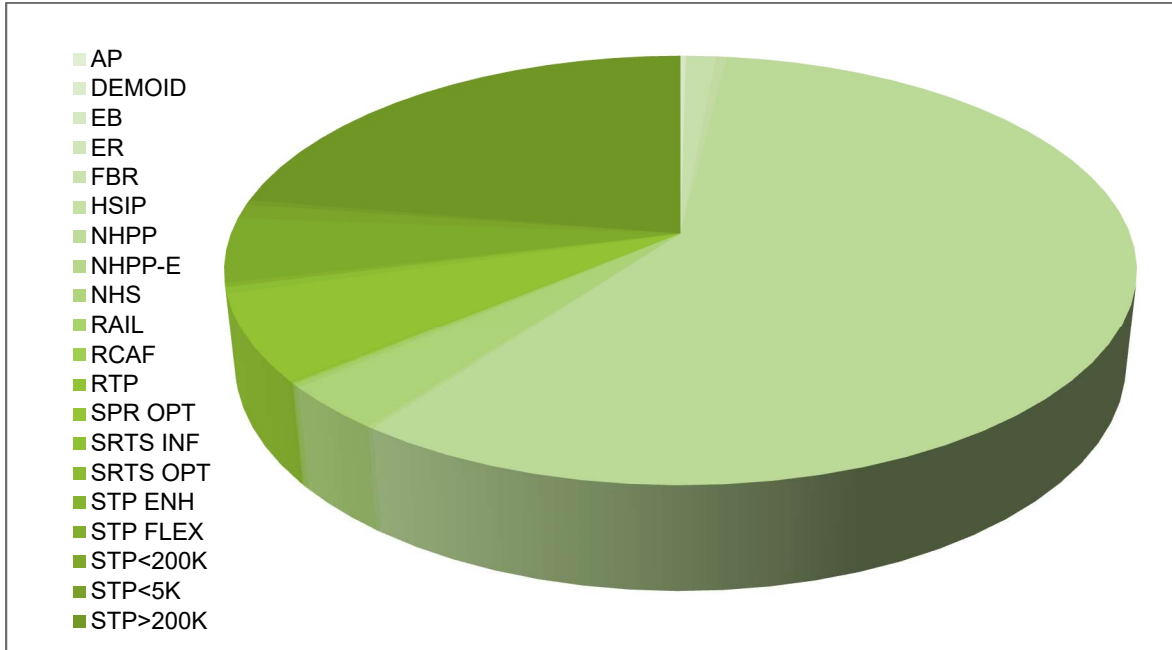
In FY 2018, more than 200 projects were scheduled for a total federal cost of \$74,799,646.11. Of this total, \$70,584,889.11 (94.4%) was for highway/bridge projects and \$4,214,757.00 (5.6%) was for transit projects.

FY 2018 Federally Obligated Projects Summary



The largest percentage of highway/bridge funds (25.72% total) obligated was the National Highway Performance Program (NHPP) funding stream supports the condition and performance of the National Highway System; provides support for the construction of new facilities on the NHS; and ensures that investments of federal-aid funds in highway construction are directed to support progress toward the achievement of performance targets established in a state's asset management plan for the NHS. This program had a federal funding total of \$42,453,323.33. In the chart below, the funding by category is illustrated with corresponding percentage of funding. Negative numbers indicate money that was de-obligated. In some cases, it was money that the LaDOTD advanced construction with state funds and now the state funds are removed, and federal funds added.

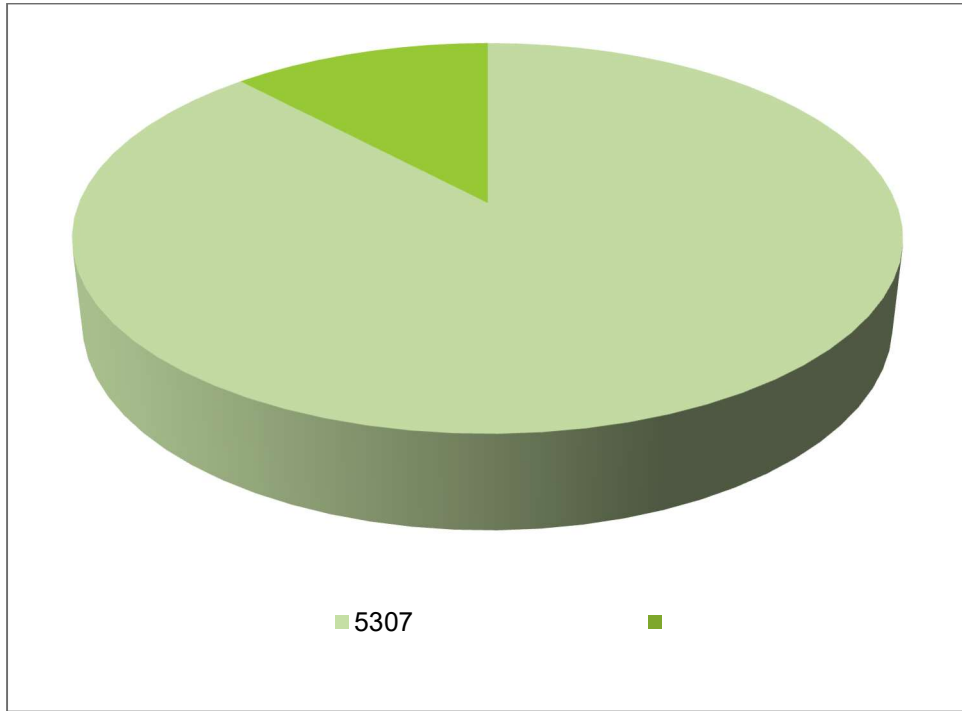
FY 2017 Federally Obligated Highway/Bridge Projects by Funding Category



Prefix	Total Federal Funds	Percentage Federal Funds
AP	\$4,465.90	0.01%
DEMOID	\$151,258.99	0.21%
EB	\$7,327.07	0.01%
ER	\$4,378.46	0.01%
FBR	\$915,053.99	1.30%
HSIP	-\$338,915.21	-0.48%
NHPP	\$42,453,323.33	60.15%
NHPP-E	-\$127,864.05	-0.18%
NHS	\$2,455,404.34	3.48%
RAIL	-\$169,782.20	-0.24%
RCAF	\$87,657.20	0.12%
RTP	\$115,637.93	0.16%
SPR OPT	\$4,736,000.80	6.71%
SRTS INF	-\$344,851.53	-0.49%
SRTS OPT	\$29,318.80	0.04%
STP ENH	\$190,244.83	0.27%
STP FLEX	\$3,539,229.67	5.01%
STP<200K	\$796,738.56	1.13%
STP<5K	-\$264,693.46	-0.38%
STP>200K	\$16,344,955.69	23.16%
AP	\$4,465.90	0.01%
DEMOID	\$151,258.99	0.21%
Total	\$70,584,889.11	100.00%

The largest percentage of transit funds (88% total) obligated was the FTA Section 5307 Capital Budget category of funding. These funds were used for administration, operations, planning, and capital improvements. The chart below illustrates these percentages:

FY 2018 Federally Obligated Transit Projects by FTA Funding Category



Prefix	Total Federal Funds	Percentage of Funds
Preventive Maintenance	\$2,725,000.00	65%
ADA Paratransit Service	\$325,000.00	8%
Construct Enhanced ADA	\$40,000.00	1%
Support Equipment and Service Veh	\$184,671.00	4%
Bus Rolling Stock	\$450,000.00	10%
Section 5307 Total	\$3,724,671.00	88%
Section 5339	\$490,086.00	12%
Total	\$4,214,757.00	100.00%

Obligation Report

This report is organized by project phase for highway/bridge projects and funding category for transit projects. The TIP identification (ID), project name, description, funding source and the total obligation amount are shown for each project. The TIP ID is a unique number given to each project selected for inclusion into the NLCOG TIP. A brief description of each project is provided. The obligation is the federal share for that TIP project in the federal fiscal year. The obligation amounts for each of the projects are added up to show the total obligation by project phase.

While federal funding is included in this report, local or state funds are also reported in most cases. In FY2017, federal funding was distributed through the following funding categories:

- **(AP)** funds are used for
- **Demonstration Projects (DEMO)** funding refers to line items, for each individual project, within the past transportation authorizations (i.e. ISTEA, TEA-21, SAFETEA-LU, but not MAP-21) that explicitly devotes funding to the line item project utilizing funds from any number of programs (i.e. STP, HSIP, IM, etc.) sources.
- **Emergency Relief Program (ER)** is an FTA program, established under MAP-21 legislation, that aids public transit operators in the aftermath of an emergency or major disaster. The program helps states and public transportation systems pay for protecting, repairing, and/or replacing equipment and facilities that may suffer or have suffered serious damage due to an emergency, including natural disasters such as floods, hurricanes, and tornadoes.
- **Equitable Bonus (EB)** provides funding to states based on equity considerations. These include a minimum rate of return on contributions to the Highway Account of the Highway Trust Fund, and a minimum increase relative to the average dollar amount of apportionments under TEA-21.
- **Federal Bridge Replacement On/Off System (FBR)** are federal funds used for the replacement, rehabilitation or widening of any federal aid facility on- or off-system.
- **FTA Section 5307** funds are used for capital, operating assistance, preventive maintenance and planning purposes for mass transportation improvements in urbanized areas.
- **Highway Safety Improvement Program (HSIP/HSIPPEN)** provides funding to achieve a significant reduction in traffic fatalities and serious injuries on all public roads through the implementation of infrastructure-related highway safety improvements.
- **National Highway Performance Program (NHPP/NHPP-E)** supports the condition and performance of the NHS; provides support for the construction of new facilities on the NHS; and ensures that investments of federal-aid funds in highway construction are directed to support progress toward the achievement of performance targets established in a state's asset management plan for the NHS.
- **National Highway System (NHS)** funds improvements to the dynamic roadway system that can change in response to future travel and trade demands which includes the interstate system, as well as other roads important to the nation's economy, defense and mobility.
- **Recreational Trails Program (RTP)** provides funds to the States to develop and maintain recreational trails and trail-related facilities for both non-motorized and motorized recreational trail uses.
- **Rail Cost Adjustment Factor (RCAF)** is an index used for the adjustment for inflation in long-term railroad contracts, rate negotiations, and transportation studies, computed quarterly.
- **Safe Routes to School (SRTS)** funds infrastructure-related projects that will substantially improve the ability of students to walk and bicycle to school, such as sidewalk improvements, traffic calming and speed reduction improvements,

pedestrian and bicycle crossing improvements, on-street bicycle facilities, off-street bicycle and pedestrian facilities, secure bicycle parking facilities, and traffic diversion improvements near schools. These funds also may be used for public awareness campaigns and outreach to press and community leaders; traffic education and enforcement near schools; student sessions on bicycle and pedestrian safety, health, and environment; and funding for training, volunteers, and managers of safe routes to school programs.

- **Surface Transportation Program (STP>200K / STP<200K / STP<5K)** provides flexible funding that may be used by States and localities for projects to preserve and improve the conditions and performance on any Federal-aid highway, bridge and tunnel projects on any public road, pedestrian and bicycle infrastructure, and transit capital projects, including intercity bus terminals. Within the metropolitan area, funds may be used for roadway reconstruction, rehabilitation, traffic operational improvements, bicycle / pedestrian facilities, and studies. Funding may also be used in areas with a population of 5,000 or less on roads functionally classified as minor collectors.
- **Surface Transportation Program Transportation Enhancements (STP ENH)** is flexible funding that may be used by states and localities for projects to preserve and improve the conditions and performance on any Federal-aid highway, bridge and tunnel projects on any public road, pedestrian and bicycle infrastructure, and transit capital projects, including intercity bus terminals.
- **Surface Transportation Program (STP FLEX)** is a flexible funding category used to fund roadway reconstruction, Intelligent Transportation System (ITS) projects, or bridge/interchange work.
- **Surface Transportation Program Rail Hazard Elimination and Highway Crossings Protective Devices (RAIL HE/PD)** are safety set aside funds that provide programs to reduce the number and severity of crashes at public highway-rail grade crossings (Section 130) and correct or improve hazardous locations, sections, and elements on any public road, public surface transportation facility, or public bike/pedestrian path or trail.

Some projects include a mixture of different TIP funding categories, and thus one project line under one funding source does not necessarily equal the total obligated funding for that project. The tables below are based on records obtained from LaDOTD, FHWA, and FTA, as NLCOG does not directly participate in the obligation process.

Technical Terms

Various tables, figures, and project tracking sheets within this report include the following technical terms to describe and aid in understanding the projects.

- **Funding source** refers to the category of funding source for the primary source of funds.
- **Project numbers** given by the LaDOTD as the state transportation project number and to illustrate the project stage.
- **Project Description** shows a brief description often referenced by a local street, road or highway.
- **Percent of federal share** refers to the funding split of federal to local/state funds. For examples, 80% means the federal share is 80% of the project cost and local/state funds make up the remaining 20%.
- **Federal funds** are the federal share from the federal government to complete the project (obligation).
- **Total cost** shows the total cost for the project's given phase.
- **FHWA transaction date** refers to the date the project was entered into the FHWA system.
- **Advance construction funds** refer to funds the state of Louisiana advanced in place of federal funds for that phase. Negative numbers show money that was de-obligated. In some cases, it is money that the state advanced construction with state funds and now the state funds are removed, and the federal funds are added.

Annual Listing of Federally Obligated Projects for Fiscal Year 2018 (Highway) – By Funding Category

Funding Source	% Fed Share	Federal Funds Amount	State Funds Amount	Converted Funds Amount	Local Funds Amount	Advance Construction Funds	Flex Match Amount	Other Funds	Total All Funds	FHWA Trans Date	Project Number/Phase	Project Description
AP	80.00	4,465.90	1,116.48	0.00	0.00	0.00	0.00	0.00	5,582.38	4/3/2018	H.001779.2	JIMMIE DAVIS BRIDGE (LA 511) (HBI)
DEMOID	80.00	151,259.00	37,814.75	0.00	0.00	0.00	0.00	0.00	189,073.75	7/27/2017	H.003495.6	I-49N, SEGMENT K-PHASE 1
DEMOID	80.00	-0.01	0.00	0.00	0.00	0.00	0.00	0.00	-0.01	7/20/2017	H.003855.5	BOSSIER PAR CONG RELIEF WINFIELD RD
EB	80.00	0.00	0.00	0.00	0.00	0.00	0.00	0.00	0.00	7/24/2017	H.001764.6	LA 526 - PINES RD
EB	80.00	0.00	0.00	0.00	0.00	0.00	0.00	0.00	0.00	7/24/2017	H.001764.6	LA 526 - PINES RD
EB	90.00	9,827.81	1,091.98	0.00	0.00	0.00	0.00	0.00	10,919.79	8/8/2017	H.011241.6	I-20: AIRLINE DRIVE RAMP EXTENSION
EB	80.00	-7,904.35	-1,976.09	0.00	0.00	0.00	0.00	0.00	-9,880.44	3/6/2018	H.011094.5	LA 3094: HEARNE AV BR REHAB
EB	90.00	5,403.61	600.40	0.00	0.00	0.00	0.00	0.00	6,004.01	5/1/2018	H.011241.6	I-20: AIRLINE DRIVE RAMP EXTENSION
EB	80.00	0.00	0.00	0.00	0.00	0.00	0.00	0.00	0.00	6/5/2018	H.001635.4	FOX SKIN BAYOU BRIDGE
ER	80.00	-149,830.20	-37,457.55	0.00	0.00	0.00	0.00	0.00	-187,287.75	12/18/2017	H.012502.6	LA 157: EMBANKMENT FAIL NEAR BODCAU BAYOU
ER	80.00	149,830.20	37,457.55	0.00	0.00	0.00	0.00	0.00	187,287.75	5/16/2018	H.012502.6	LA 157: EMBANKMENT FAIL NEAR BODCAU BAYOU
ER	80.00	12,378.46	3,094.62	0.00	0.00	0.00	0.00	0.00	15,473.08	5/24/2018	H.012502.6	LA 157: EMBANKMENT FAIL NEAR BODCAU BAYOU
ER	80.00	-8,000.00	-2,000.00	0.00	0.00	0.00	0.00	0.00	-10,000.00	5/31/2018	H.012502.6	LA 157: EMBANKMENT FAIL NEAR BODCAU BAYOU
FBR-OFF	80.00	840,283.30	210,070.82	0.00	0.00	0.00	0.00	0.00	1,050,354.12	9/11/2017	H.010060.6	BLANCHARD FURRH ROAD / CHOCTAW BAYOU
FBR-OFF	80.00	83,315.20	20,828.80	0.00	0.00	0.00	0.00	0.00	104,144.00	12/18/2017	H.001623.3	CREEK BRIDGE & IRISH BAYOU BRIDGE
FBR-ON	80.00	0.00	0.00	0.00	0.00	0.00	0.00	0.00	0.00	7/19/2017	H.010849.5	SHREVEPORT-BARKSDALE HWY (EB BRIDGE)
FBR-ON	80.00	-12,575.17	-3,143.79	0.00	0.00	0.00	0.00	0.00	-15,718.96	7/26/2017	H.010849.5	SHREVEPORT-BARKSDALE HWY (EB BRIDGE)
FBR-ON/OFF	80.00	4,030.66	1,007.66	0.00	0.00	0.00	0.00	0.00	5,038.32	5/31/2018	H.001623.5	CREEK BRIDGE & IRISH BAYOU BRIDGE
FBR-ON/OFF	80.00	0.00	0.00	0.00	0.00	0.00	0.00	0.00	0.00	6/5/2018	H.001635.2	FOX SKIN BAYOU BRIDGE
FBR-ON/OFF	80.00	0.00	0.00	0.00	0.00	0.00	0.00	0.00	0.00	6/5/2018	H.001635.3	FOX SKIN BAYOU BRIDGE
FBR-ON/OFF	80.00	0.00	0.00	0.00	0.00	0.00	0.00	0.00	0.00	6/5/2018	H.001635.3	FOX SKIN BAYOU BRIDGE
FBR-ON/OFF	80.00	0.00	0.00	0.00	0.00	0.00	0.00	0.00	0.00	6/5/2018	H.001635.3	FOX SKIN BAYOU BRIDGE
FBR-ON/OFF	80.00	0.00	0.00	0.00	0.00	0.00	0.00	0.00	0.00	6/5/2018	H.001635.4	FOX SKIN BAYOU BRIDGE
FBR-ON/OFF	80.00	0.00	0.00	0.00	0.00	0.00	0.00	0.00	0.00	6/5/2018	H.001635.6	FOX SKIN BAYOU BRIDGE
HSIP	90.00	0.00	2,582.94	0.00	0.00	23,246.50	0.00	0.00	25,829.44	9/7/2017	H.012309.3	LA 523: SIGHT DISTANCE AT STEWART DR
HSIP	100.00	-3,571.22	0.00	0.00	0.00	0.00	0.00	0.00	-3,571.22	10/24/2017	H.010969.6	LA 3132: GUARD RAIL UPGRADE
HSIP	100.00	0.00	0.00	0.00	0.00	0.00	0.00	0.00	0.00	10/24/2017	H.010969.6	LA 3132: GUARD RAIL UPGRADE
HSIP	100.00	-4,970.08	0.00	0.00	0.00	0.00	0.00	0.00	-4,970.08	10/24/2017	H.010969.6	LA 3132: GUARD RAIL UPGRADE
HSIP	100.00	0.00	0.00	0.00	0.00	0.00	0.00	0.00	0.00	10/24/2017	H.010969.6	LA 3132: GUARD RAIL UPGRADE
HSIP	90.00	23,246.50	0.00	23,246.50	0.00	-23,246.50	0.00	0.00	0.00	11/6/2017	H.012309.3	LA 523: SIGHT DISTANCE AT STEWART DR
HSIP	90.00	-3,198.28	-799.57	0.00	0.00	0.00	0.00	0.00	-3,997.85	12/12/2017	H.010202.5	I-20: EXIT LANE EXTENSION (EXITS 3 & 5)
HSIP	90.00	-450,433.87	-50,048.21	0.00	0.00	0.00	0.00	0.00	-500,482.08	12/12/2017	H.010202.6	I-20: EXIT LANE EXTENSION (EXITS 3 & 5)
HSIP	90.00	9,400.49	1,044.50	0.00	0.00	0.00	0.00	0.00	10,444.99	2/6/2018	H.012309.3	LA 523: SIGHT DISTANCE AT STEWART DR
HSIP	90.00	4,630.31	514.48	0.00	0.00	0.00	0.00	0.00	5,144.79	2/20/2018	H.010202.6	I-20: EXIT LANE EXTENSION (EXITS 3 & 5)
HSIP	90.00	25,811.79	2,867.98	0.00	0.00	0.00	0.00	0.00	28,679.77	2/28/2018	H.001769.2	LA 511: LA 523 - FERN AV
HSIP	90.00	-1,113.71	-123.75	0.00	0.00	0.00	0.00	0.00	-1,237.46	3/21/2018	H.007896.6	LA 3105 AT SHED ROAD TURN LANES
HSIP	90.00	61,282.86	6,809.21	0.00	0.00	0.00	0.00	0.00	68,092.07	3/21/2018	H.012309.6	LA 523: SIGHT DISTANCE AT STEWART DR

Funding Source	% Fed Share	Federal Funds Amount	State Funds Amount	Converted Funds Amount	Local Funds Amount	Advance Construction Funds	Flex Match Amount	Other Funds	Total All Funds	FHWA Trans Date	Project Number/Phase	Project Description
NHPP	80.00	230,646.75	57,661.69	0.00	0.00	0.00	0.00	0.00	288,308.44	7/6/2017	H.011111.6	I-49 NORTH, SEGMENT K - PHASE 2
NHPP	90.00	891,824.42	99,091.60	0.00	0.00	0.00	0.00	0.00	990,916.02	7/12/2017	H.003263.6	I-20: OVERPASSES REHAB. (BOSSIER CITY)
NHPP	100.00	-0.01	0.00	0.00	0.00	0.00	0.00	0.00	-0.01	7/20/2017	H.003363.6	I220 PHASE 1 SIGN UPGRADE- I20 TO LA 173
NHPP	80.00	82,619.16	20,654.79	0.00	0.00	0.00	0.00	0.00	103,273.95	7/24/2017	H.003495.6	I-49N, SEGMENT K-PHASE 1
NHPP	80.00	0.00	-20,654.79	82,619.16	0.00	-82,619.16	0.00	0.00	-103,273.95	7/24/2017	H.003495.6	I-49N, SEGMENT K-PHASE 1
NHPP	80.00	0.00	-37,814.75	151,259.00	0.00	-151,259.00	0.00	0.00	-189,073.75	7/27/2017	H.003495.6	I-49N, SEGMENT K-PHASE 1
NHPP	80.00	908,797.38	227,199.59	0.00	0.00	0.00	0.00	0.00	1,135,996.97	7/31/2017	H.011538.6	MOTORIST ASSISTANCE PATROL STATEWIDE
NHPP	80.00	6,429.86	1,607.46	0.00	0.00	0.00	0.00	0.00	8,037.32	8/8/2017	H.001779.2	JIMMIE DAVIS BRIDGE (LA 511) (HBI)
NHPP	90.00	17,444,159.79	1,938,239.98	0.00	0.00	0.00	0.00	0.00	19,382,399.77	8/11/2017	H.009575.6	I-20: TX S/L- 0.44 MI E OF MONKHOUSE DR.
NHPP	80.00	911,086.47	227,770.87	0.00	0.00	0.00	0.00	0.00	1,138,857.34	8/11/2017	H.011421.6	LA 3032: LT TURN LANES AT CAMILLA DR
NHPP	80.00	0.00	-4,715.68	18,864.70	0.00	-18,864.70	0.00	0.00	-23,580.38	8/16/2017	H.003495.6	I-49N, SEGMENT K-PHASE 1
NHPP	80.00	0.00	100,000.00	0.00	0.00	400,000.00	0.00	0.00	500,000.00	8/17/2017	H.011538.6	MOTORIST ASSISTANCE PATROL STATEWIDE
NHPP	80.00	116,124.55	29,031.14	0.00	0.00	0.00	0.00	0.00	145,155.69	8/28/2017	H.012009.1	US 71: MARKET ST BRIDGE OVER ICG RR(HBI)
NHPP	100.00	90,140.33	0.00	0.00	0.00	0.00	0.00	0.00	90,140.33	8/28/2017	H.012360.6	I-220: PAVEMENT MARKING REPLACEMENT I
NHPP	80.00	0.00	-6,702.00	26,808.00	0.00	-26,808.00	0.00	0.00	-33,510.00	9/6/2017	H.003495.6	I-49N, SEGMENT K-PHASE 1
NHPP	80.00	10,000,000.00	2,500,000.00	0.00	0.00	0.00	0.00	0.00	12,500,000.00	9/11/2017	H.011111.6	I-49 NORTH, SEGMENT K - PHASE 2
NHPP	80.00	-10,000,000.00	-2,500,000.00	0.00	0.00	0.00	0.00	0.00	-12,500,000.00	9/11/2017	H.011111.6	I-49 NORTH, SEGMENT K - PHASE 2
NHPP	80.00	0.00	-65,233.04	260,932.21	0.00	-260,932.21	0.00	0.00	-326,165.25	9/17/2017	H.003495.6	I-49N, SEGMENT K-PHASE 1
NHPP	80.00	14,463.25	3,615.81	0.00	0.00	0.00	0.00	0.00	18,079.06	10/16/2017	H.003501.6	I-49 NORTH (US 71(S) TO LA 2) SEG D
NHPP	90.00	928,506.79	103,167.42	0.00	0.00	0.00	0.00	0.00	1,031,674.21	10/17/2017	H.009575.6	I-20: TX S/L- 0.44 MI E OF MONKHOUSE DR.
NHPP	80.00	160,676.75	40,169.19	0.00	0.00	0.00	0.00	0.00	200,845.94	10/17/2017	H.011421.6	LA 3032: LT TURN LANES AT CAMILLA DR
NHPP	80.00	40,000.00	0.00	0.00	0.00	0.00	0.00	10,000.00	50,000.00	10/23/2017	H.003495.4	I-49N, SEGMENT K-PHASE 1
NHPP	90.00	76,623.95	8,513.77	0.00	0.00	0.00	0.00	0.00	85,137.72	10/23/2017	H.009575.6	I-20: TX S/L- 0.44 MI E OF MONKHOUSE DR.
NHPP	80.00	271,680.00	67,920.00	0.00	0.00	0.00	0.00	0.00	339,600.00	10/25/2017	H.003514.6	I-49 N(MIRA MYRTIS RD.-LA 168)SEG B
NHPP	90.00	5,649.81	1,412.45	0.00	0.00	0.00	0.00	0.00	7,062.26	11/2/2017	H.011241.6	I-20: AIRLINE DRIVE RAMP EXTENSION
NHPP	80.00	400,000.00	0.00	400,000.00	0.00	-400,000.00	0.00	0.00	0.00	11/6/2017	H.011538.6	MOTORIST ASSISTANCE PATROL STATEWIDE
NHPP	90.00	83,139.17	9,237.69	0.00	0.00	0.00	0.00	0.00	92,376.86	11/13/2017	H.012889.5	I-20 REHAB (W OF LA 3 TO AIRLINE DR)
NHPP	80.00	4,463.46	1,115.87	0.00	0.00	0.00	0.00	0.00	5,579.33	11/16/2017	H.001779.2	JIMMIE DAVIS BRIDGE (LA 511) (HBI)
NHPP	90.00	351,015.31	39,001.70	0.00	0.00	0.00	0.00	0.00	390,017.01	11/29/2017	H.003263.6	I-20: OVERPASSES REHAB. (BOSSIER CITY)
NHPP	90.00	4,242.52	1,060.63	0.00	0.00	0.00	0.00	0.00	5,303.15	11/29/2017	H.012316.5	I-20: PEDESTRIAN OVERPASS REMOVAL
NHPP	100.00	312,623.03	0.00	0.00	0.00	0.00	0.00	0.00	312,623.03	12/4/2017	H.013184.6	I-49: PAVEMENT MARKING REPLACEMENT VI
NHPP	90.00	7,265.74	807.30	0.00	0.00	0.00	0.00	0.00	8,073.04	1/4/2018	H.011241.6	I-20: AIRLINE DRIVE RAMP EXTENSION
NHPP	80.00	0.00	-6,941.41	27,765.64	0.00	-27,765.64	0.00	0.00	-34,707.05	1/8/2018	H.003495.6	I-49N, SEGMENT K-PHASE 1
NHPP	90.00	633,272.44	70,363.60	0.00	0.00	0.00	0.00	0.00	703,636.04	1/8/2018	H.011437.6	I-220: EB EXIT RAMP IMPROVEMENT AT LA 3
NHPP	90.00	2,433,705.45	270,411.72	0.00	0.00	0.00	0.00	0.00	2,704,117.17	1/8/2018	H.011449.6	GREENWOOD REST AREA RENOVATIONS
NHPP	80.00	-6,829.53	-1,707.38	0.00	0.00	0.00	0.00	0.00	-8,536.91	1/30/2018	H.003244.5	DIST 04 BRIDGE BRG REHAB & MISC REPAIRS
NHPP	80.00	0.00	-20,000.00	80,000.00	0.00	-80,000.00	0.00	0.00	-100,000.00	2/6/2018	H.003495.6	I-49N, SEGMENT K-PHASE 1
NHPP	90.00	4,702.90	522.54	0.00	0.00	0.00	0.00	0.00	5,225.44	2/20/2018	H.012316.5	I-20: PEDESTRIAN OVERPASS REMOVAL
NHPP	80.00	81,504.00	20,376.00	0.00	0.00	0.00	0.00	0.00	101,880.00	3/1/2018	H.006474.1	SHREVEPORT IMMEDIATE ITS PHASE 2B
NHPP	90.00	5,974.49	663.83	0.00	0.00	0.00	0.00	0.00	6,638.32	3/6/2018	H.011241.6	I-20: AIRLINE DRIVE RAMP EXTENSION
NHPP	80.00	80,000.00	0.00	0.00	0.00	-80,000.00	0.00	0.00	0.00	3/7/2018	H.003495.6	I-49N, SEGMENT K-PHASE 1
NHPP	90.00	92,365.43	10,262.83	0.00	0.00	0.00	0.00	0.00	102,628.26	3/7/2018	H.009575.6	I-20: TX S/L- 0.44 MI E OF MONKHOUSE DR.
NHPP	80.00	-7,999.99	-2,000.00	0.00	0.00	0.00	0.00	0.00	-9,999.99	3/13/2018	H.003501.6	I-49 NORTH (US 71(S) TO LA 2) SEG D
NHPP	80.00	90,560.00	22,640.00	0.00	0.00	0.00	0.00	0.00	113,200.00	3/15/2018	H.011111.6	I-49 NORTH, SEGMENT K - PHASE 2
NHPP	100.00	64,796.20	0.00	0.00	0.00	0.00	0.00	0.00	64,796.20	3/19/2018	H.012360.6	I-220: PAVEMENT MARKING REPLACEMENT I

Funding Source	% Fed Share	Federal Funds Amount	State Funds Amount	Converted Funds Amount	Local Funds Amount	Advance Construction Funds	Flex Match Amount	Other Funds	Total All Funds	FHWA Trans Date	Project Number/Phase	Project Description
NHPP	90.00	14,316,063.24	1,590,673.69	0.00	0.00	0.00	0.00	0.00	15,906,736.93	4/25/2018	H.012170.6	I-20: I-220 TO US 80 OVERPASS
NHPP	90.00	9,389.48	1,043.28	0.00	0.00	0.00	0.00	0.00	10,432.76	5/1/2018	H.012451.5	DISTRICT 04-MISCELLANEOUS BRIDGE REPAIRS
NHPP	80.00	28,067.26	7,016.82	0.00	0.00	0.00	0.00	0.00	35,084.08	5/2/2018	H.012009.1	US 71: MARKET ST BRIDGE OVER ICG RR(HBI)
NHPP	80.00	-141,084.00	-35,271.00	0.00	0.00	0.00	0.00	-150,504.22	-326,859.22	5/22/2018	H.010662.6	LA511: JIMMIE DAVIS BRIDGE REHABILITATION
NHPP	80.00	1,007,948.67	251,987.09	0.00	0.00	0.00	0.00	0.00	1,259,935.76	6/25/2018	H.011538.6	MOTORIST ASSISTANCE PATROL STATEWIDE
NHPP	90.00	5,827.45	647.49	0.00	0.00	0.00	0.00	0.00	6,474.94	6/26/2018	H.011241.6	I-20: AIRLINE DRIVE RAMP EXTENSION
NHPP	80.00	663,608.75	165,902.19	0.00	0.00	0.00	0.00	0.00	829,510.94	6/26/2018	H.013245.6	MOTORIST ASSISTANCE PATROL (MAP)
NHPP	80.00	-250,727.39	-62,500.01	0.00	0.00	0.00	0.00	0.00	-313,227.40	6/28/2018	H.011538.6	MOTORIST ASSISTANCE PATROL STATEWIDE
NHPP-E	90.00	8,227.10	914.12	0.00	0.00	0.00	0.00	0.00	9,141.22	7/11/2017	H.009575.5	I-20: TX S/L- 0.44 MI E OF MONKHOUSE DR.
NHPP-E	80.00	332,554.04	83,138.51	0.00	0.00	0.00	0.00	0.00	415,692.55	7/24/2017	H.001764.6	LA 526 - PINES RD
NHPP-E	80.00	18,864.70	4,715.68	0.00	0.00	0.00	0.00	0.00	23,580.38	8/16/2017	H.003495.6	I-49N, SEGMENT K-PHASE 1
NHPP-E	90.00	7,543.11	838.12	0.00	0.00	0.00	0.00	0.00	8,381.23	8/21/2017	H.009575.5	I-20: TX S/L- 0.44 MI E OF MONKHOUSE DR.
NHPP-E	80.00	222,747.54	55,686.88	0.00	0.00	0.00	0.00	0.00	278,434.42	8/29/2017	H.003896.5	I-49 NORTH (LA 169 - LA 530)
NHPP-E	80.00	26,808.00	6,702.00	0.00	0.00	0.00	0.00	0.00	33,510.00	9/6/2017	H.003495.6	I-49N, SEGMENT K-PHASE 1
NHPP-E	100.00	6,432.39	0.00	0.00	0.00	0.00	0.00	0.00	6,432.39	9/8/2017	H.011267.6	I-20 & I-49 PAVEMENT MARKING REPL. I
NHPP-E	80.00	-2,799.02	-699.76	0.00	0.00	0.00	0.00	0.00	-3,498.78	11/8/2017	H.001764.6	LA 526 - PINES RD
NHPP-E	80.00	-344,458.17	-86,114.54	0.00	0.00	0.00	0.00	0.00	-430,572.71	11/13/2017	H.003498.6	I-49 NORTH (LA 173 - LA 169) SEG H
NHPP-E	100.00	5,180.44	0.00	0.00	0.00	0.00	0.00	0.00	5,180.44	11/16/2017	H.011267.6	I-20 & I-49 PAVEMENT MARKING REPL. I
NHPP-E	80.00	-221,859.97	-55,464.99	0.00	0.00	0.00	0.00	0.00	-277,324.96	12/12/2017	H.003896.5	I-49 NORTH (LA 169 - LA 530)
NHPP-E	90.00	-340,903.27	-37,878.14	0.00	0.00	0.00	0.00	0.00	-378,781.41	1/30/2018	H.003244.6	DIST 04 BRIDGE BRG REHAB & MISC REPAIRS
NHPP-E	80.00	80,000.00	20,000.00	0.00	0.00	0.00	0.00	0.00	100,000.00	2/6/2018	H.003495.6	I-49N, SEGMENT K-PHASE 1
NHPP-E	80.00	75,270.76	18,817.69	0.00	0.00	0.00	0.00	0.00	94,088.45	2/20/2018	H.001661.5	BLACK BAYOU BRIDGE
NHPP-E	100.00	-1,471.70	0.00	0.00	0.00	0.00	0.00	0.00	-1,471.70	4/27/2018	H.011267.6	I-20 & I-49 PAVEMENT MARKING REPL. I
NHS	80.00	0.01	0.01	0.00	0.00	0.00	0.00	0.00	0.02	7/24/2017	H.003495.6	I-49N, SEGMENT K-PHASE 1
NHS	80.00	94,067.94	23,516.98	0.00	0.00	0.00	0.00	0.00	117,584.92	9/17/2017	H.003495.6	I-49N, SEGMENT K-PHASE 1
NHS	80.00	166,864.27	41,716.07	0.00	0.00	0.00	0.00	0.00	208,580.34	9/17/2017	H.003495.6	I-49N, SEGMENT K-PHASE 1
NHS	80.00	0.00	0.00	40,000.00	0.00	-40,000.00	0.00	-10,000.00	-50,000.00	10/23/2017	H.003495.4	I-49N, SEGMENT K-PHASE 1
NHS	80.00	887,946.85	0.00	887,946.85	0.00	-887,946.85	0.00	0.00	0.00	11/17/2017	H.003495.4	I-49N, SEGMENT K-PHASE 1
NHS	80.00	348,053.78	87,013.44	0.00	0.00	0.00	0.00	0.00	435,067.22	11/21/2017	H.003495.3	I-49N, SEGMENT K-PHASE 1
NHS	90.00	714,930.67	79,436.74	0.00	0.00	0.00	0.00	0.00	794,367.41	11/30/2017	H.012889.5	I-20 REHAB (W OF LA 3 TO AIRLINE DR)
NHS	90.00	7,272.19	808.02	0.00	0.00	0.00	0.00	0.00	8,080.21	12/6/2017	H.012889.5	I-20 REHAB (W OF LA 3 TO AIRLINE DR)
NHS	80.00	-245,050.44	-61,262.61	0.00	0.00	0.00	0.00	0.00	-306,313.05	12/12/2017	H.009287.6	SHREVEPORT MOTORIST ASSISTANCE PATROL
NHS	80.00	27,765.64	6,941.41	0.00	0.00	0.00	0.00	0.00	34,707.05	1/8/2018	H.003495.6	I-49N, SEGMENT K-PHASE 1
NHS	80.00	436,941.27	109,235.32	0.00	0.00	0.00	0.00	0.00	546,176.59	4/18/2018	H.003495.6	I-49N, SEGMENT K-PHASE 1
NHS	80.00	8,333.22	2,083.31	0.00	0.00	0.00	0.00	0.00	10,416.53	4/18/2018	H.003495.6	I-49N, SEGMENT K-PHASE 1
NHS	90.00	8,896.16	988.46	0.00	0.00	0.00	0.00	0.00	9,884.62	4/18/2018	H.012889.5	I-20 REHAB (W OF LA 3 TO AIRLINE DR)
NHS	80.00	-617.22	-154.31	0.00	0.00	0.00	0.00	0.00	-771.53	6/18/2018	H.003511.3	I-49 NORTH (MARTIN LUTHER KING, JR DRIVE
RAIL HE	80.00	-29,357.89	-1,144.85	0.00	0.00	0.00	0.00	-6,194.62	-36,697.36	12/28/2017	H.009822.6	KCS (VIVIAN) ALABAMA AVE.
RAIL PD	100.00	17,209.73	0.00	17,209.73	0.00	-17,209.73	0.00	0.00	0.00	10/17/2017	H.012356.6	ELLERBE & YEARWOOD: UP RR XINGS (CADD)
RAIL PD	100.00	9,031.69	0.00	9,031.69	0.00	-9,031.69	0.00	0.00	0.00	10/23/2017	H.012356.6	ELLERBE & YEARWOOD: UP RR XINGS (CADD)
RAIL PD	100.00	16,947.18	0.00	16,947.18	0.00	-16,947.18	0.00	0.00	0.00	11/21/2017	H.012724.6	BOLINGER CUTOFF RD: UP-N OF PLAIN DEALING
RAIL PD	100.00	13,619.49	0.00	13,619.49	0.00	-13,619.49	0.00	0.00	0.00	12/12/2017	H.012356.6	ELLERBE & YEARWOOD: UP RR XINGS (CADD)
RAIL PD	100.00	10,302.31	0.00	0.00	0.00	0.00	0.00	0.00	10,302.31	12/13/2017	H.010686.6	LA 169: KCS RR XING (CADD)

Funding Source	% Fed Share	Federal Funds Amount	State Funds Amount	Converted Funds Amount	Local Funds Amount	Advance Construction Funds	Flex Match Amount	Other Funds	Total All Funds	FHWA Trans Date	Project Number/Phase	Project Description
RAIL PD	100.00	-10,183.28	0.00	0.00	0.00	0.00	0.00	0.00	-10,183.28	3/22/2018	H.010686.6	LA 169: KCS RR XING (CADD)
RAIL PD	100.00	-197,351.43	0.00	0.00	-41,989.74	0.00	0.00	0.00	-239,341.17	3/22/2018	H.011028.6	UP SEVERAL RR XINGS (CADD)
RCAF	80.00	4,115.89	1,028.97	0.00	0.00	0.00	0.00	0.00	5,144.86	7/11/2017	H.001623.2	CREEK BRIDGE & IRISH BAYOU BRIDGE
RCAF	80.00	5,887.74	1,471.94	0.00	0.00	0.00	0.00	0.00	7,359.68	7/11/2017	H.001661.5	BLACK BAYOU BRIDGE
RCAF	80.00	4,199.74	1,049.93	0.00	0.00	0.00	0.00	0.00	5,249.67	9/21/2017	H.001661.5	BLACK BAYOU BRIDGE
RCAF	80.00	4,753.42	1,188.35	0.00	0.00	0.00	0.00	0.00	5,941.77	11/2/2017	H.000118.5	BAYOU FIFI BRIDGE (HBI)
RCAF	80.00	4,078.38	1,019.60	0.00	0.00	0.00	0.00	0.00	5,097.98	11/2/2017	H.001623.2	CREEK BRIDGE & IRISH BAYOU BRIDGE
RCAF	80.00	4,522.81	1,130.70	0.00	0.00	0.00	0.00	0.00	5,653.51	11/16/2017	H.001661.5	BLACK BAYOU BRIDGE
RCAF	80.00	4,301.68	1,075.42	0.00	0.00	0.00	0.00	0.00	5,377.10	12/13/2017	H.000118.5	BAYOU FIFI BRIDGE (HBI)
RCAF	80.00	5,811.78	1,452.94	0.00	0.00	0.00	0.00	0.00	7,264.72	1/4/2018	H.001661.5	BLACK BAYOU BRIDGE
RCAF	80.00	11,246.88	2,811.72	0.00	0.00	0.00	0.00	0.00	14,058.60	4/17/2018	H.001795.6	RED CHUTE AND OLD CHANNEL BRIDGES
RCAF	80.00	7,034.06	1,758.51	0.00	0.00	0.00	0.00	0.00	8,792.57	5/1/2018	H.001166.5	CADDO LAKE BRIDGE (HBI)
RCAF	80.00	7,034.23	1,758.56	0.00	0.00	0.00	0.00	0.00	8,792.79	5/16/2018	H.001795.6	RED CHUTE AND OLD CHANNEL BRIDGES
RCAF	80.00	4,654.19	1,163.55	0.00	0.00	0.00	0.00	0.00	5,817.74	5/31/2018	H.001795.6	RED CHUTE AND OLD CHANNEL BRIDGES
RCAF	80.00	0.00	0.00	0.00	0.00	0.00	0.00	0.00	0.00	6/5/2018	H.001635.4	FOX SKIN BAYOU BRIDGE
RCAF	80.00	0.00	0.00	0.00	0.00	0.00	0.00	0.00	0.00	6/5/2018	H.001635.6	FOX SKIN BAYOU BRIDGE
RCAF	80.00	6,427.53	1,606.88	0.00	0.00	0.00	0.00	0.00	8,034.41	6/13/2018	H.000118.5	BAYOU FIFI BRIDGE (HBI)
RCAF	80.00	8,933.90	2,233.47	0.00	0.00	0.00	0.00	0.00	11,167.37	6/26/2018	H.001795.6	RED CHUTE AND OLD CHANNEL BRIDGES
RCAF	90.00	4,654.97	1,034.44	0.00	0.00	0.00	0.00	0.00	5,689.41	6/26/2018	H.012316.5	I-20: PEDESTRIAN OVERPASS REMOVAL
RTP	80.00	0.20	0.05	0.00	0.00	0.00	0.00	0.00	0.25	1/8/2018	H.010879.6	AMERICAN ROSE CENTER TRAIL RESTORATION
RTP	80.00	10,167.33	121.04	0.00	3,609.50	0.00	0.00	0.00	13,897.87	1/8/2018	H.010879.6	AMERICAN ROSE CENTER TRAIL RESTORATION
RTP	80.00	105,470.40	1,255.60	0.00	25,112.00	0.00	0.00	0.00	131,838.00	2/28/2018	H.012278.6	LOGGY BAYOU WMA TRAIL
SPR OPT	80.00	989,115.24	0.00	0.00	247,278.81	0.00	0.00	0.00	1,236,394.05	7/19/2017	H.972275.1	PL MPO'S 7/1/17-6/30/18
SPR OPT	80.00	665,149.86	0.00	0.00	166,287.47	0.00	0.00	0.00	831,437.33	7/19/2017	H.972275.1	PL MPO'S 7/1/17-6/30/18
SPR OPT	80.00	3,081,735.70	0.00	0.00	770,433.92	0.00	0.00	0.00	3,852,169.62	7/19/2017	H.972275.1	PL MPO'S 7/1/17-6/30/18
SPR OPT	80.00	0.00	0.00	0.00	0.00	0.00	0.00	0.00	0.00	6/5/2018	H.972275.1	PL MPO'S 7/1/17-6/30/18
SPR OPT	80.00	0.00	0.00	0.00	0.00	0.00	0.00	0.00	0.00	6/5/2018	H.972275.1	PL MPO'S 7/1/17-6/30/18
SPR OPT	80.00	0.00	0.00	0.00	0.00	0.00	0.00	0.00	0.00	6/5/2018	H.972275.1	PL MPO'S 7/1/17-6/30/18
SRTS INF	100.00	-344,851.53	0.00	0.00	0.00	0.00	0.00	0.00	-344,851.53	6/18/2018	H.006738.6	KIDS ON THE MOVE! (PHASE III)
SRTS OPT	100.00	29,318.80	0.00	0.00	0.00	0.00	0.00	0.00	29,318.80	11/16/2017	H.009279.6	NLCOG, SHREVEPORT SRTS PROJECT
STP ENH	95.00	190,244.83	1,175.78	0.00	84.55	0.00	26,722.28	0.00	191,505.16	10/17/2017	H.002941.6	I-49 LANDSCAPING INTERCHANGES
STP FLEX	80.00	619.84	154.96	0.00	0.00	0.00	0.00	0.00	774.80	7/17/2017	H.001766.3	WEST 70TH STREET (LA 526 - PINES ROAD)
STP FLEX	80.00	368.99	92.25	0.00	0.00	0.00	0.00	0.00	461.24	7/20/2017	H.001766.3	WEST 70TH STREET (LA 526 - PINES ROAD)
STP FLEX	80.00	272,939.58	68,234.89	0.00	0.00	0.00	0.00	0.00	341,174.47	7/25/2017	H.012101.6	LA 530: LA 1 TO LA 538
STP FLEX	80.00	793,162.26	198,290.57	0.00	0.00	0.00	0.00	0.00	991,452.83	8/11/2017	H.012124.6	DISTRICT 04: DISTRICTWIDE AST
STP FLEX	80.00	21,260.40	5,315.10	0.00	0.00	0.00	0.00	0.00	26,575.50	8/15/2017	H.009508.5	LA 2: CANEY CREEK BRIDGE TO WEBSTER P/L
STP FLEX	80.00	0.00	-14,236.36	0.00	0.00	0.00	0.00	14,236.36	0.00	8/17/2017	H.012124.6	DISTRICT 04: DISTRICTWIDE AST
STP FLEX	80.00	4,386.37	1,096.59	0.00	0.00	0.00	0.00	0.00	5,482.96	9/8/2017	H.001166.5	CADDO LAKE BRIDGE (HBI)
STP FLEX	80.00	216,062.10	51,548.93	0.00	0.00	0.00	0.00	2,466.59	270,077.62	10/17/2017	H.012124.6	DISTRICT 04: DISTRICTWIDE AST

Funding Source	% Fed Share	Federal Funds Amount	State Funds Amount	Converted Funds Amount	Local Funds Amount	Advance Construction Funds	Flex Match Amount	Other Funds	Total All Funds	FHWA Trans Date	Project Number/Phase	Project Description
STP FLEX	100.00	0.00	0.00	0.00	0.00	52,468.20	0.00	0.00	52,468.20	10/31/2017	H.013165.6	US71@ROBERT E LEE: KCS RR (BOSSIER CITY)
STP FLEX	80.00	-395.09	-98.77	0.00	0.00	0.00	0.00	0.00	-493.86	11/8/2017	H.001766.3	WEST 70TH STREET (LA 526 - PINES ROAD)
STP FLEX	100.00	-30,793.73	0.00	0.00	0.00	0.00	0.00	0.00	-30,793.73	11/21/2017	H.011099.5	DIST. 04 SIGNAL TIMING STUDIES PHASE 2
STP FLEX	80.00	-1,523.57	-380.89	0.00	0.00	0.00	0.00	0.00	-1,904.46	11/29/2017	H.010307.6	LA 538: LA 1 TO NORTH JCT OF LA 530
STP FLEX	80.00	163,408.43	4,763.67	0.00	0.00	0.00	0.00	36,088.43	204,260.53	12/7/2017	H.001795.6	RED CHUTE AND OLD CHANNEL BRIDGES
STP FLEX	80.00	0.00	-970,278.67	0.00	0.00	0.00	0.00	970,278.67	0.00	12/7/2017	H.001795.6	RED CHUTE AND OLD CHANNEL BRIDGES
STP FLEX	100.00	105,194.11	0.00	0.00	0.00	0.00	0.00	0.00	105,194.11	12/13/2017	H.009825.6	KCS (MOORINGSPO) BARNETTE RD.
STP FLEX	80.00	-75,042.49	-18,760.62	0.00	0.00	0.00	0.00	0.00	-93,803.11	12/18/2017	H.012288.6	LA 72: HAMILTON RD TO BENTON RD
STP FLEX	80.00	0.00	3,497.32	0.00	103,664.23	119,968.57	0.00	0.00	227,130.12	1/12/2018	H.013337.6	LA 3105: KCS RR XING (BOSSIER CITY)
STP FLEX	80.00	4,244.67	1,061.17	0.00	0.00	0.00	0.00	0.00	5,305.84	3/6/2018	H.000118.5	BAYOU FIFI BRIDGE (HBI)
STP FLEX	80.00	4,257.28	1,064.32	0.00	0.00	0.00	0.00	0.00	5,321.60	3/6/2018	H.001166.5	CADDO LAKE BRIDGE (HBI)
STP FLEX	100.00	-106,392.28	0.00	0.00	0.00	0.00	0.00	0.00	-106,392.28	3/22/2018	H.009825.6	KCS (MOORINGSPO) BARNETTE RD.
STP FLEX	80.00	51,711.12	12,927.78	0.00	0.00	0.00	0.00	0.00	64,638.90	3/29/2018	H.010278.6	LA 173: JCT HEARNE AVE TO JCT I-220
STP FLEX	100.00	-402,013.44	0.00	0.00	0.00	0.00	-109,972.86	0.00	-402,013.44	4/11/2018	H.010300.6	US 80: JCT JEFFERSON PAIGE RD- HEARNE RD
STP FLEX	80.00	2,501,885.75	625,471.44	0.00	0.00	0.00	0.00	0.00	3,127,357.19	5/2/2018	H.009508.6	LA 2: CANEY CREEK BRIDGE TO WEBSTER P/L
STP FLEX	100.00	10,000.04	0.00	0.00	0.00	0.00	0.00	0.00	10,000.04	5/30/2018	H.010300.6	US 80: JCT JEFFERSON PAIGE RD- HEARNE RD
STP FLEX	100.00	-3,917.05	0.00	0.00	0.00	0.00	0.00	0.00	-3,917.05	6/18/2018	H.011733.5	US 80 TRAFFIC CONTROL UPGRADES
STP FLEX	80.00	9,806.38	2,451.59	0.00	0.00	0.00	0.00	0.00	12,257.97	6/26/2018	H.000118.5	BAYOU FIFI BRIDGE (HBI)
STP<200K	80.00	198,244.53	49,561.13	0.00	0.00	0.00	0.00	0.00	247,805.66	6/25/2018	H.011538.6	MOTORIST ASSISTANCE PATROL STATEWIDE
STP<200K	80.00	216,868.67	54,217.17	0.00	0.00	0.00	0.00	0.00	271,085.84	6/26/2018	H.013245.6	MOTORIST ASSISTANCE PATROL (MAP)
STP<200K	80.00	381,625.36	95,406.34	0.00	0.00	0.00	0.00	0.00	477,031.70	6/28/2018	H.011538.6	MOTORIST ASSISTANCE PATROL STATEWIDE
STP<5K	80.00	-122,367.67	-30,591.92	0.00	0.00	0.00	0.00	0.00	-152,959.59	11/21/2017	H.009913.6	DISTRICTWIDE ASPHALTIC SURFACE TREATMENT
STP<5K	80.00	-134,325.79	-33,581.45	0.00	0.00	0.00	0.00	0.00	-167,907.24	6/18/2018	H.001159.3	UNION PACIFIC RAILROAD OVERPASS NEAR BEN
STP<5K	80.00	-8,000.00	-2,000.00	0.00	0.00	0.00	0.00	0.00	-10,000.00	6/18/2018	H.001159.4	UNION PACIFIC RAILROAD OVERPASS NEAR BEN
STP>200K	80.00	11,593,793.51	138,021.35	0.00	2,760,427.03	0.00	0.00	0.00	14,492,241.89	9/13/2017	H.003854.6	SWAN LAKE RD (I-220 TO FLAT RIVER)
STP>200K	80.00	1,198,634.93	14,269.46	0.00	285,389.27	0.00	0.00	0.00	1,498,293.66	9/13/2017	H.003854.6	SWAN LAKE RD (I-220 TO FLAT RIVER)
STP>200K	80.00	28,270.18	7,067.54	0.00	0.00	0.00	0.00	0.00	35,337.72	10/16/2017	H.003497.6	I-49 NORTH (LA 1 - LA 173) SEG I
STP>200K	80.00	393,054.48	4,679.22	0.00	93,584.40	0.00	0.00	0.00	491,318.10	11/30/2017	H.003854.4	SWAN LAKE RD (I-220 TO FLAT RIVER)
STP>200K	80.00	-28,826.80	-7,206.70	0.00	0.00	0.00	0.00	0.00	-36,033.50	12/12/2017	H.009287.6	SHREVEPORT MOTORIST ASSISTANCE PATROL
STP>200K	80.00	-760,130.71	-9,049.17	0.00	-180,983.51	0.00	0.00	0.00	-950,163.39	3/8/2018	H.003854.6	SWAN LAKE RD (I-220 TO FLAT RIVER)
STP>200K	80.00	-9,569.55	-2,392.39	0.00	0.00	0.00	0.00	0.00	-11,961.94	3/13/2018	H.003497.6	I-49 NORTH (LA 1 - LA 173) SEG I
STP>200K	80.00	1,485,506.40	17,684.60	0.00	353,692.00	0.00	0.00	0.00	1,856,883.00	5/9/2018	H.003854.6	SWAN LAKE RD (I-220 TO FLAT RIVER)
STP>200K	80.00	841,905.13	210,476.28	0.00	0.00	0.00	0.00	0.00	1,052,381.41	6/25/2018	H.011538.6	MOTORIST ASSISTANCE PATROL STATEWIDE
STP>200K	80.00	844,797.55	211,199.38	0.00	0.00	0.00	0.00	0.00	1,055,996.93	6/25/2018	H.011538.6	MOTORIST ASSISTANCE PATROL STATEWIDE
STP>200K	80.00	419,401.69	104,850.42	0.00	0.00	0.00	0.00	0.00	524,252.11	6/26/2018	H.013245.6	MOTORIST ASSISTANCE PATROL (MAP)
STP>200K	80.00	469,744.24	117,436.06	0.00	0.00	0.00	0.00	0.00	587,180.30	6/26/2018	H.013245.6	MOTORIST ASSISTANCE PATROL (MAP)
STP>200K	80.00	-131,625.36	-32,906.34	0.00	0.00	0.00	0.00	0.00	-164,531.70	6/28/2018	H.011538.6	MOTORIST ASSISTANCE PATROL STATEWIDE
		\$70,584,889.11	\$6,561,130.44	\$2,056,250.15	\$4,586,589.93	\$-1,540,566.88	\$-83,250.58	\$866,371.21	\$81,058,413.81			

Annual Listing of Federally Obligated Projects for Fiscal Year 2018 (Transit)

Project Number	Project Name	Description	Funding Source	Total Cost	Federal Share	Local Share
FTA Section 5307 Projects						
5307-2018-01	PREVENTIVE MAINTENANCE	OPERATIONS	5307	\$3,406,250	\$2,725,000	\$681,250
5307-2018-02	NON-FIXED ROUTE ADA PARATRANSIT SERVICE	OPERATIONS	5307	\$406,250	\$325,000	\$81,250
5307-2018-03	CONSTRUCT ENHANCED ADA	CAPITAL	5307	\$50,000	\$40,000	\$10,000
5307-2018-04	SUPPORT EQUIPMENT & SERVICE VEHICLES	CAPITAL	5307	\$230,839	\$184,671	\$46,168
5307-2018-05	BUS ROLLING STOCK	CAPITAL	5307	\$529,412	\$450,000	\$79,412
FTA Section 5339 Projects						
5339-2018-01	BUS ROLLING STOCK	CAPITAL	5339	\$576,572	\$490,086	\$86,486
<i>Fiscal Year 2018 Total</i>					\$4,214,757.00	

Project Tracking Sheets

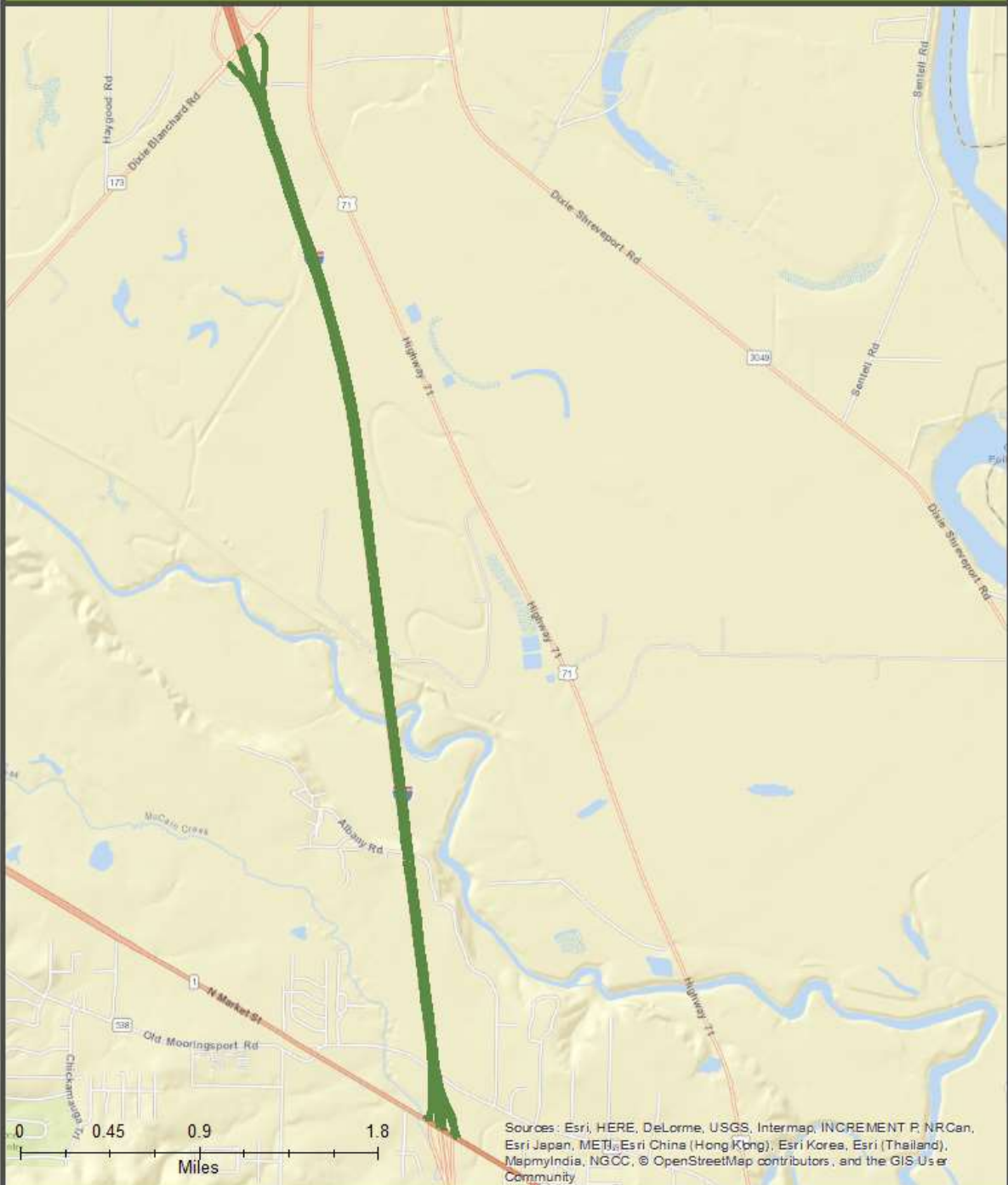
To aid in understanding the detailed project listings worksheets, significant TIP programmed, and obligated projects are individually referenced through project tracking sheets. Minor overlay and geometric improvements do not have tracking sheets developed for them.

I-49 Segment B (Mira Myrtis Road -LA 168)



Project Program Code	Profile	Federal District	Federal State	Federal Funds Amount	State Funds Amount	Federal Funds Amount	State Funds Amount	Local Funds Amount	Other Funds Amount	Total of all Funds	Construction Funds	Other Funds	Total of all Funds	Project Description	RAA A Auth Date	Fed Program Code Description
2021	1644	10	10	211,000,000	0	0	0	0	0	211,000,000	0	0	211,000,000	I-49 Segment B (Mira Myrtis Rd - LA 168)	3/10/2010	NATIONAL HIGHWAY PROGRAM

I-49 Segment I (LA 1 - LA 173)



Federal Program Code	Profile Code	Federal Activity	Federal Amount	State Funds Amount	Private Funds Amount	Contract Funds Amount	Local Funds Amount	Advance Funds Amount	Pay Funds Amount	Match Funds Amount	Other Funds Amount	Total of all funds	FY04 Total	Project ID	Project Description	FY04 A Auth Code	Fed Program Code Description
202	100	100	22,916,118	4,028,368	0.00	0.00	0.00	0.00	0.00	0.00	0.00	26,944,486	26,944,486	48000001LA1-LA173V651	I-49 Segment I (LA 1 - LA 173)	202-100-100-100	202-100-100-100
202	100	100	60.00	4,028,368	0.00	0.00	0.00	0.00	0.00	0.00	0.00	4,088,368	4,088,368	48000001LA1-LA173V651	I-49 Segment I (LA 1 - LA 173)	202-100-100-100	202-100-100-100

The Northwest Louisiana Council of Governments is an intergovernmental association of local governments established to assist in planning for common needs, cooperating for the mutual benefit, and coordinating for sound regional development. NLCOG's purpose is to strengthen both the individual and collective power of local governments and to help them recognize regional opportunities, eliminate unnecessary duplication, and make joint decisions for the benefit of the entire Northwest Louisiana community. This is achieved by developing and implementing constructive and workable policies and programs for solving area-wide problems. These issues include, but are not limited to, matters affecting transportation, economic, health, safety, welfare, education, and regional development issues.

NLCOG is funded by a variety of funding sources including federal grants from the U. S. Department of Transportation's Federal Highway Administration, and Federal Transit Administration, the Louisiana Department of Transportation and Development, as well as by NLCOG's local member governments.

P 318-841-5950

F 318-841-5952

625 Texas Street, Suite 200

Shreveport, LA 71101

www.nlcog.org

www.nlcoglistens.com

