

Prepared For



U.S. Department
of Transportation

**Federal Highway
Administration**



Shreveport-Bossier City Regional ITS Architecture ADDENDUM

Prepared By



FINAL
November 2015

Introduction

A comprehensive review of the regional intelligent transportation systems (ITS) architecture is recommended every five years. The Louisiana Department of Transportation and Development (LADOTD) requested addendum updates to the Shreveport-Bossier City Regional ITS Architecture document which was developed in September 2012. The purpose of this addendum is to provide additional documentation of the updates required for the regional ITS architecture. This addendum therefore documents significant changes required to be made to the architecture so that project deployments are relevant and emerging needs are met. The following are the addendum updates that are required for the Shreveport-Bossier City Regional ITS Architecture document.

Geographic Boundary

The geographic boundary of the Shreveport-Bossier City regional ITS architecture coincides with the study area of the MPO and is provided as an attachment to this addendum (See Figure 1).

ITS Project Needs

1. Communications, CCTV Cameras and DMS required on urban I-49 in Shreveport from LA 526 to I-20.
2. Add ITS devices to I-49 from I-220 to LA 1. Minimum recommended devices are two DMS signs for NB and SB directions, three CCTV camera sites (MLK and LA 1 interchanges and one LA 1 southbound)
3. CCTV Cameras and communication are required to fill in blind spots in coverage along I-220 from I-20 in Shreveport to I-20 in Bossier City.
4. Additional CCTV on I-20 through the two downtown areas (Shreveport and Bossier City)
5. Add devices (CCTV cameras and DMS) to LA 526 from LA 3132 to I-20
6. Device maintenance

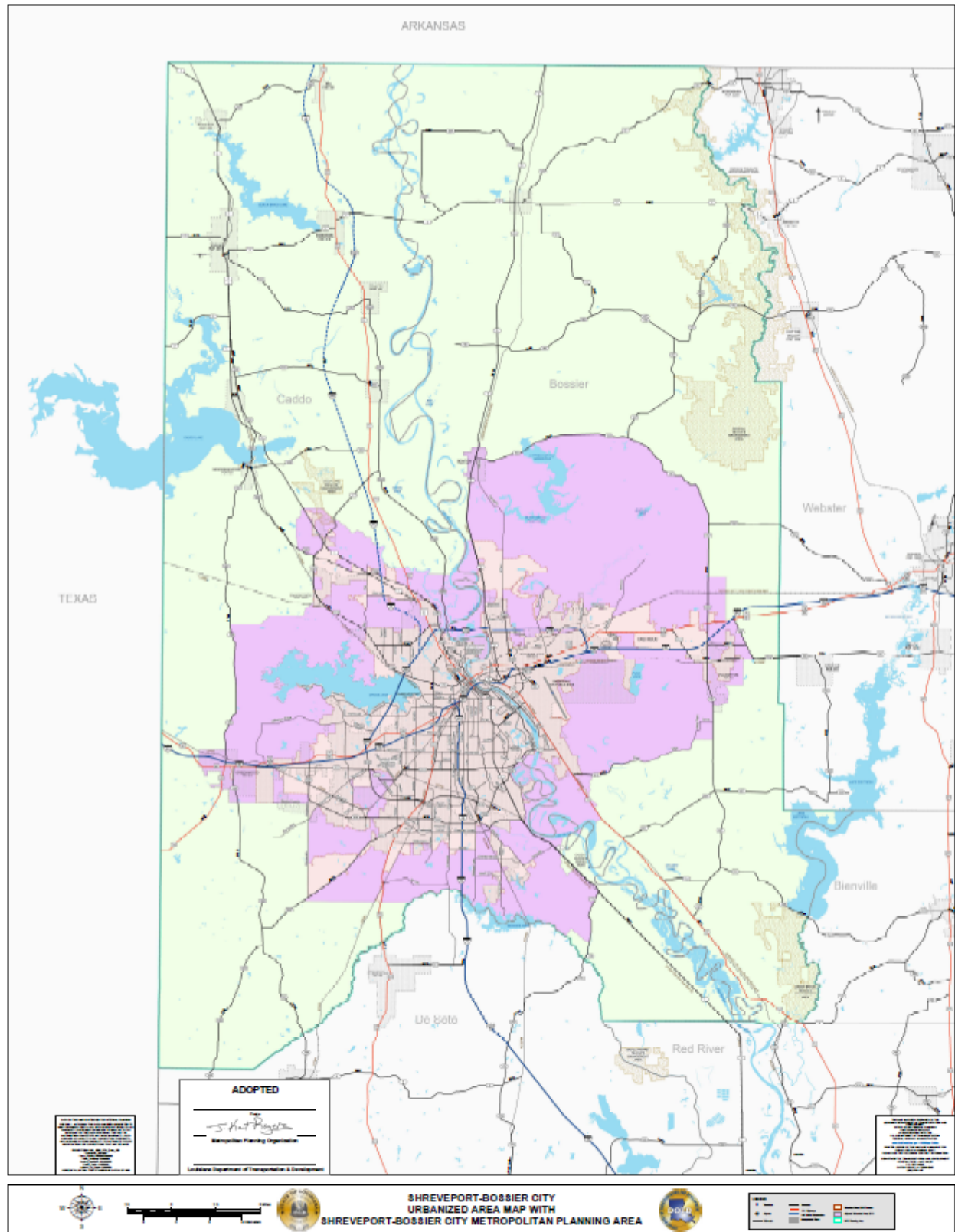


Figure 1: Shreveport MPO Boundary