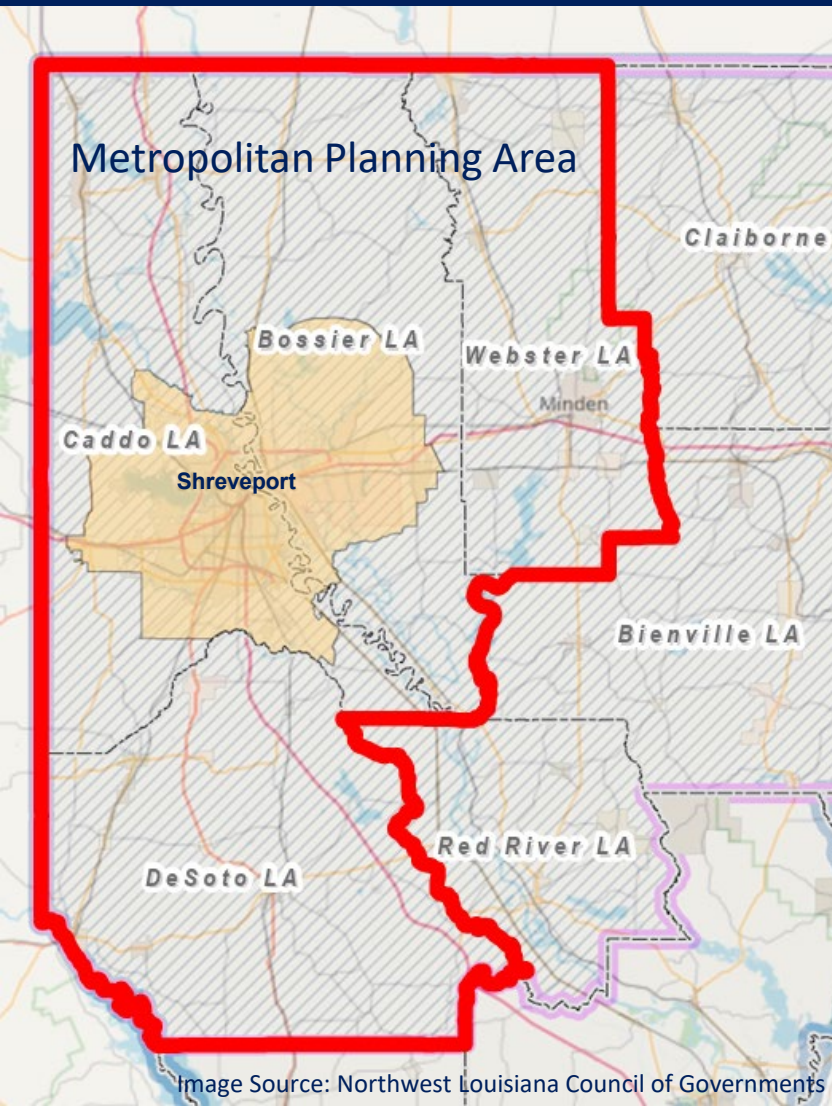


Shreveport-Bossier City Metropolitan Planning Organization (MPO)



Transportation Management Area Certification Review

Introduction to the Planning Process & Request for Comments



U.S. Department of Transportation
Federal Highway Administration
Federal Transit Administration

December 19, 2025



U.S. Department
of Transportation
Federal Highway
Administration

DISCLAIMER

Except for the statutes and regulations cited, the contents of this presentation do not have the force and effect of law and are not meant to bind the States or the public in any way. This presentation is intended only to provide information regarding existing requirements under the law or agency policies.



U.S. Department of Transportation
Federal Highway Administration
Federal Transit Administration



U.S. Department
of Transportation
Federal Highway
Administration

AGENDA/CONTENTS



INTRODUCTION



FEDERAL REVIEW
PROCESS



MPO PLANNING
PROCESS



PUBLIC
COMMENT



U.S. Department of Transportation
Federal Highway Administration
Federal Transit Administration

The Federal Review Team

Federal Highway Administration

- Laura Phillips
- Mary Stringfellow

Federal Transit Administration

- Michelle Bloomer



U.S. Department of Transportation
Federal Highway Administration
Federal Transit Administration



Images Source: Microsoft 365 Stock Images

Every **4 years** FTA and FHWA jointly review the metropolitan transportation **planning process** for **TMA**s (areas over **200,000** in population)



Why are we here?

Part of this review includes seeking public input



U.S. Department of Transportation
Federal Highway Administration
Federal Transit Administration



Image Source: Microsoft 365 Stock Images

Federal Review Process



DESK AUDIT



SITE VISIT &
PUBLIC COMMENT



FINAL REPORT



U.S. Department of Transportation
Federal Highway Administration
Federal Transit Administration





U.S. Department of Transportation
Federal Highway Administration
Federal Transit Administration

What is the Outcome of this Review?

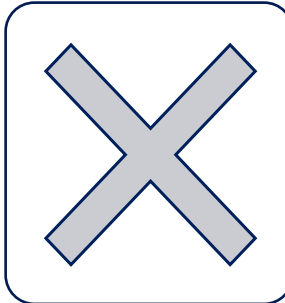
23 CFR 450.336(b)



Certified



Certified subject to corrective
actions



Not Certified

Metropolitan Transportation Planning Process

23 CFR Part 450

What is the Planning Process?

- Procedures resulting in transportation decisions, and by which projects are developed, selected, and prioritized for implementation within the region.

Why is it important?

- Decides how a substantial share of Federal funding is spent nationwide.
- The process lays the framework for the future transportation system.

Who is involved?

- MPO
- State and Federal Departments of Transportation
- Public Transportation Operator(s)
- Local Jurisdictions
- Interest Groups
- Local Citizens

How?

- 3-C Approach:
 - Continuing
 - Cooperative
 - Comprehensive
- Multimodal
- Public Input



U.S. Department of Transportation
Federal Highway Administration
Federal Transit Administration

Metropolitan Transportation Planning Process

23 CFR Part 450

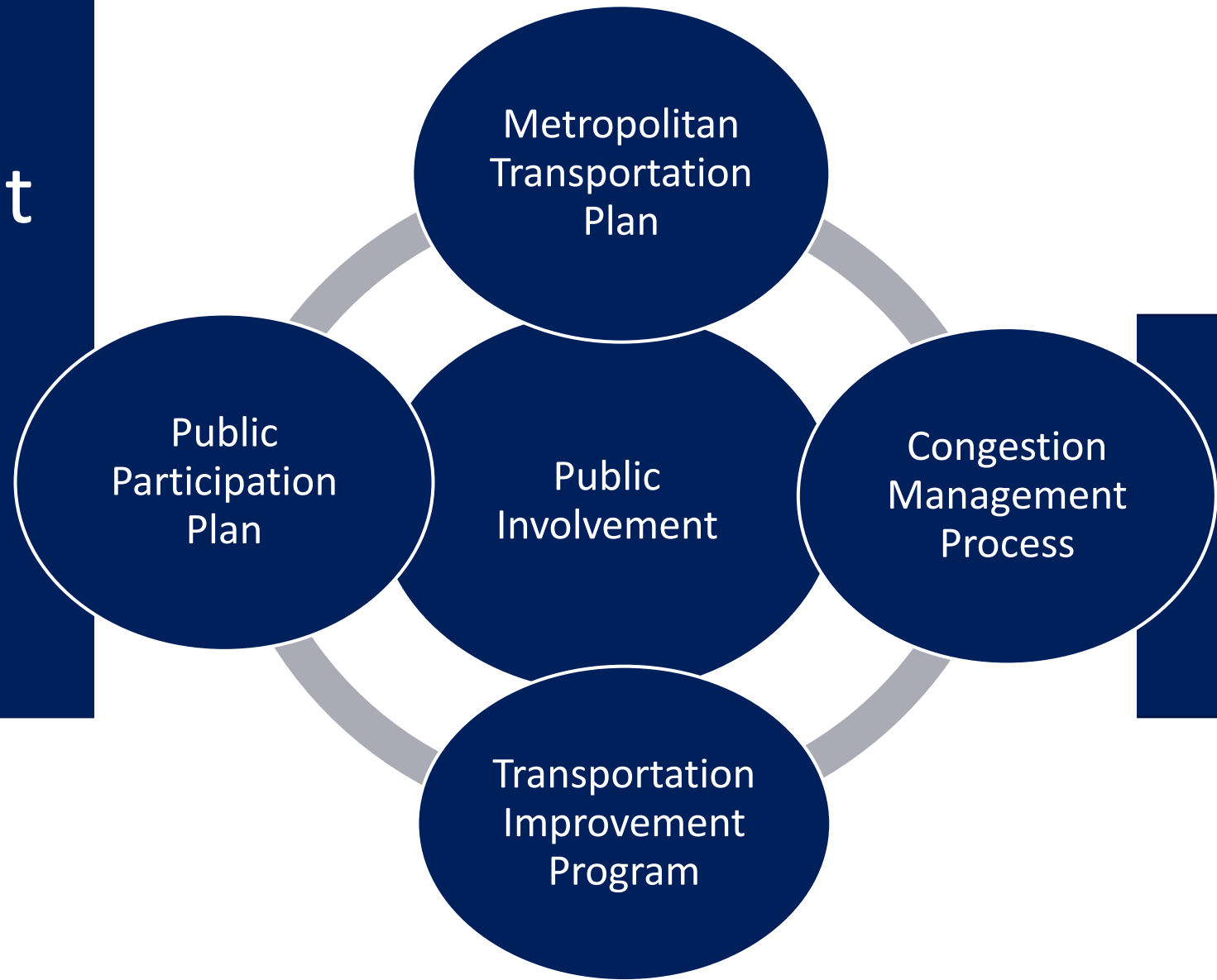
Products

- Metropolitan Transportation Plan (MTP)
- Congestion Management Process (CMP)
- Transportation Improvement Program (TIP)
- Public Participation Plan (PPP)
- Unified Planning Work Program (UPWP)



U.S. Department of Transportation
Federal Highway Administration
Federal Transit Administration

How do the products fit together?



U.S. Department of Transportation
Federal Highway Administration
Federal Transit Administration

We want to hear from you!

Comments?

Do you have an adequate opportunity to participate in the MPO Transportation Planning Process?

Have you been involved in the MPO Transportation Planning Process?

What are your views of the process?



U.S. Department of Transportation
Federal Highway Administration
Federal Transit Administration

Contact Us!

Send comments by email:

laura.phillips@dot.gov

michelle.bloomer@dot.gov

OR by mail:

Laura Phillips

Federal Highway Administration LA Division

5304 Flanders Dr. Ste. A

Baton Rouge, LA 70808

Michelle Bloomer

Federal Transit Administration Region 6

819 Taylor St. Ste. 14A02

Ft. Worth, TX 76102

Submit comments for consideration in the certification report
by January 16, 2026.



U.S. Department
of Transportation

**Federal Highway
Administration**

**Federal Transit
Administration**